



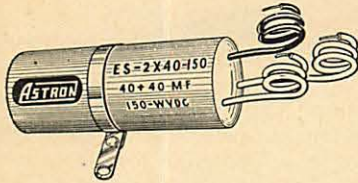
capacitors

ASTRON CORPORATION

EAST NEWARK, N. J.

TYPE ES

Cardboard-Cased Electrolytics



- Dual and triple-section units. Can be used in place of costlier metal-can types of equal rating in television, radio, radio-phonos and other equipment. 65°C. operation.
- Sections wrapped in plastic film. Lasting protection from moisture, humidity, severest climatic conditions. High-melting-point wax fill.
- Centered radial mounting strap. Plastic insulated wire leads, 6" long. Color coding on tubes.
- Overall wax coating for added protection against moisture and humidity.

DUAL UNITS (Common Negative)

Cat. No.	Cap. Mf./WVDC	D. x L.	List Price
ESD-140	10+10/50	5/8x2 3/8	\$1.40
ESD-150	8+8/150	5/8x2 3/8	1.45
ESD-155	20+20/150	3/4x2 1/2	1.65
ESD-156	30+20/150	3/4x2 1/2	1.70
ESD-160	30+30/150	7/8x2 1/2	1.80
ESD-163	40+20/150	7/8x2 1/2	1.75
ESD-165	40+40/150	1 x2 1/2	1.85
ESD-170	50+30/150	1 x2 1/2	1.95
ESD-175	50+50/150	1 x3	2.10
ESD-190	80+40/150	1 1/2x3	2.25
ESD-250	16+16/250	7/8x2 1/2	1.80
ESD-255	20+20/250	7/8x2 1/2	1.85
ESD-450	8+8/450	1 x2 1/2	1.70
ESD-455	20+20/450	1 1/2x3 1/4	2.50
ESD-475	40+40/450	1 1/2x3 1/4	3.40

TRIPLE UNITS (Common Negative)

Cat. No.	Cap. Mf./WVDC	D. x L.	Price
EST-555	20+20+20/150	1 x2 1/2	\$2.20
EST-560	40+20+20/150	1 x2 1/2	2.25
EST-570	40+30+20/150	1 x2 1/2	2.35
EST-575	40+40+20/150	1 x3	2.35
EST-580	40+40+40/150	1 x3 1/4	2.45
EST-585	60+40+20/150	1 x3 1/4	2.40
EST-595	80+40+20/150	1 1/2x3 1/4	2.50
EST-610	40+10/150+20/25	1 x2 1/2	1.95
EST-620	40+30/150+20/25	1 x2 1/2	2.30
EST-625	40+40/150+40/25	1 x3 1/4	2.40
EST-640	50+30/150+100/25	1 x3 1/4	2.50
EST-655	50+30/150+200/10	1 x3 1/4	2.55



TYPE EY

Twist-Prong Electrolytics

"SM" Safety Margin Construction

- Widest choice of singles, and dual, triple and quadruple capacitance-voltage combinations in smallest practical aluminum can sizes.
- Ideal for replacement in television, radio and other high quality electronic equipment where high ripple and high surge voltages are encountered.
- Hermetically sealed. Designed for 85°C. operation.
- Quick, easy, firm mounting through chassis slots or slotted plates for insulated or grounded connection. Mounting prong ring serves as common negative terminal.
- Terminal coding clearly stamped on container.
- Individually packaged for the service trade, including metal and phenolic mounting plates.

SINGLE UNITS

Cat. No.	Cap. Mf./WVDC	Dia. x Length	List Price
EYS-90	2000/6	1 3/8x2	2.55
EYS-100	1000/15	1 x3	2.55
EYS-105	2000/15	1 3/8x3	3.45
EYS-108	3000/15	1 3/8x3	3.50
EYS-115	100/25	1 x2	1.60
EYS-120	500/25	1 x3	2.55
EYS-125	1000/25	1 3/8x3	3.55
EYS-130	500/50	1 3/8x2 1/2	2.65
EYS-131	1000/50	1 3/8x3	3.75
EYS-133	1500/50	1 3/8x4	3.75
EYS-135	50/150	1 x2	1.65
EYS-140	80/150	1 x2	1.85
EYS-145	100/150	1 x2	2.00
EYS-150	120/150	1 x2 1/2	2.10
EYS-151	120/150	1 3/8x3	2.10
EYS-155	140/150	1 x3	2.15
EYS-160	150/150	1 x3	2.15
EYS-161	200/150	1 3/8x2 1/2	2.45
EYS-162	300/150	1 3/8x3	2.80
EYS-165	15/250	1 x2	1.55
EYS-170	30/250	1 x2	1.70
EYS-175	40/250	1 x2	1.80
EYS-180	60/250	1 x2 1/2	2.05
EYS-185	80/250	1 x3	2.16
EYS-186	100/250	1 x2 1/2	2.70
EYS-190	150/250	1 3/8x2 1/2	3.10
EYS-1901	200/250	1 3/8x3	3.95
EYS-1902	80/300	1 x3	2.55
EYS-191	100/300	1 3/8x2 1/2	2.90
EYS-193	150/300	1 3/8x3	3.50
EYS-195	30/350	1 x2	1.90
EYS-200	40/350	1 x2 1/2	2.00
EYS-205	50/350	1 x3	2.10
EYS-215	80/350	1 3/8x2 1/2	2.85
EYS-220	125/350	1 3/8x3	3.65
EYS-222	150/350	1 3/8x3 1/2	3.95
EYS-225	80/400	1 3/8x2 1/2	2.95
EYS-230	10/450	1 x2	1.55
EYS-235	20/450	1 x2	1.75
EYS-240	30/450	1 x2 1/2	1.95
EYS-245	40/450	1 x3	2.05
EYS-246	50/450	1 x3 1/2	2.35
EYS-247	60/450	1 3/8x2 1/2	2.60
EYS-250	80/450	1 3/8x3	3.05
EYS-251	100/450	1 3/8x3	3.45
EYS-253	125/450	1 3/8x4	4.25
EYS-255	30/475	1 x3	2.00
EYS-260	40/475	1 3/8x2	2.50
EYS-265	90/475	1 3/8x3 1/2	3.50
EYS-266	10/500	1 x2	1.60
EYS-267	20/500	1 x2 1/2	1.85

SINGLE UNITS (Cont.)

Cat. No.	Cap. Mf./WVDC	Dia. x Length	List Price
EYS-268	30/500	1 x3	2.00
EYS-269	40/500	1 x3 1/2	2.50
EYS-270	80/500	1 3/8x3 1/2	3.20
EYS-271	90/500	1 3/8x3 1/2	3.50

DUAL UNITS

Cat. No.	Cap. Mf./WVDC	Dia. x Length	List Price
EYD-500	1000-1000/15	1 3/8x3	4.40
EYD-505	150-50/25	1 x2	1.75
EYD-506	50-50/50	1 x2	1.70
EYD-507	100-25/50	1 x2	1.85
EYD-508	20-20/150	1 x2	1.70
EYD-510	30-30/150	1 x2	1.75
EYD-511	40-20/150	1 x2	1.60
EYD-512	40-30/150	1 x2	1.85
EYD-513	40-40/150	1 x2	1.90
EYD-514	50-30/150	1 x2	2.00
EYD-515	50-50/150	1 x2 1/2	1.95
EYD-5151	60-60/150	1 x2 1/2	2.35
EYD-5152	75-75/150	1 x3	2.60
EYD-5153	80-40/150	1 x2 1/2	2.30
EYD-5154	80-80/150	1 3/8x2	2.65
EYD-516	125-100/150	1 3/8x2 1/2	3.50
EYD-517	200-5/150	1 3/8x2 1/2	2.75
EYD-520	200-200/150	1 3/8x3 1/2	4.00
EYD-525	20-20/250	1 x2	1.90
EYD-530	40-40/250	1 x2 1/2	2.50
EYD-532	150-150/250	1 3/8x4	5.15
EYD-533	200-200/250	1 3/8x4 1/2	6.10
EYD-540	80-80/300	1 3/8x3 1/2	4.05
EYD-545	120-20/300	1 3/8x3	3.60
EYD-547	120-40/300	1 3/8x3 1/2	4.35
EYD-550	15-15/350	1 x2	2.25
EYD-555	20-20/350	1 x2 1/2	2.35
EYD-556	30-30/350	1 x3	2.90
EYD-557	50-30/350	1 3/8x2 1/2	3.15
EYD-558	80-20/350	1 3/8x2 1/2	3.50
EYD-559	60-40/350	1 3/8x3	3.95
EYD-560	80-80/350	1 3/8x3 1/2	4.70
EYD-5601	90-40/350	1 3/8x3	4.30
EYD-561	100-100/350	1 3/8x4	6.15
EYD-562	160-10/350	1 3/8x3 1/2	4.30
EYD-563	40-10/400	1 3/8x2 1/2	2.50
EYD-5631	80-60/400	1 3/8x3 1/2	4.85
EYD-564	5-5/450	1 x2	1.60
EYD-565	10-10/450	1 x2	1.90
EYD-566	15-15/450	1 x2 1/2	2.25
EYD-567	20-10/450	1 x2 1/2	2.25
EYD-575	20-20/450	1 x3	2.55
EYD-576	30-10/450	1 x3	2.50
EYD-580	30-30/450	1 3/8x2 1/2	3.05
EYD-581	40-20/450	1 3/8x2 1/2	3.00
EYD-585	40-40/450	1 3/8x3	3.45
EYD-586	50-50/450	1 3/8x3	3.85



capacitors

ASTRON CORPORATION

EAST NEWARK, N. J.

TRIPLE UNITS (Cont.)

Table listing capacitor models, capacitance values, dimensions, and prices under the 'TRIPLE UNITS' section.

QUADRUPLE UNITS

Table listing capacitor models, capacitance values, dimensions, and prices under the 'QUADRUPLE UNITS' section.

Table listing capacitor models, capacitance values, dimensions, and prices for models EYQ-2074 through EYQ-22031.

Table listing capacitor models, capacitance values, dimensions, and prices for models EYQ-22032 through EYQ-2281.



capacitors

ASTRON CORPORATION

EAST NEWARK, N. J.

METEOR* TYPE TQF (CPO4)

Glass-to-Metal Sealed
SUBMINIATURE TUBULARS
125°C. Operation

- Inserted tab construction provides smallest paper-foil capacitors available. Ideal where resonant losses are secondary to small size.
- No voltage derating necessary over entire operating temperature range —65°C. to +125°C.
- Excellent capacitance stability over entire temperature range.
- Available in a variety of construction styles to meet your specific needs, as follows:

CPO4* CP10*
CPO5* CP11*
of
MIL C-25A



Cat. No.	Cap. Mf.	Dia. x Length
300 VOLTS DC WORKING (Cont.)		
TQF-3-01	.01	.235x 3/4
TQF-3-015	.015	.235x 3/4
TQF-3-022	.022	.312x 7/8
TQF-3-027	.027	.312x 7/8
TQF-3-033	.033	.312x 7/8
TQF-3-047	.047	.312x 7/8
TQF-3-068	.068	.400x 7/8
TQF-3-1	.1	.400x1 1/8
TQF-3-15	.15	.400x1 1/8
TQF-3-22	.22	.562x1 1/8
TQF-3-27	.27	.562x1 1/8
TQF-3-33	.33	.562x1 1/8
TQF-3-47	.47	.562x1 1/8
TQF-3-68	.68	.670x1 7/8
TQF-3-1M	1.0	.750x2 1/8

Cat. No.	Cap. Mf.	Dia. x Length
100 VOLTS DC WORKING		
TQF-1-001	.001	.235x 3/4
TQF-1-0015	.0015	.235x 3/4
TQF-1-0022	.0022	.235x 3/4
TQF-1-0033	.0033	.235x 3/4
TQF-1-0047	.0047	.235x 3/4
TQF-1-0068	.0068	.235x 3/4
TQF-1-01	.01	.235x 3/4
TQF-1-015	.015	.235x 3/4
TQF-1-022	.022	.235x 3/4
TQF-1-027	.027	.235x 3/4
TQF-1-033	.033	.235x 3/4
TQF-1-047	.047	.312x 7/8
TQF-1-068	.068	.312x 7/8
TQF-1-1	.1	.312x 7/8
TQF-1-15	.15	.400x 7/8
TQF-1-22	.22	.400x1 1/8
TQF-1-27	.27	.400x1 1/8
TQF-1-33	.33	.400x1 1/8
TQF-1-47	.47	.562x1 1/8
TQF-1-68	.68	.562x1 1/8
TQF-1-1M	1.0	.562x1 1/8

Cat. No.	Cap. Mf.	Dia. x Length
200 VOLTS DC WORKING (Cont.)		
TQF-2-0033	.0033	.235x 3/4
TQF-2-0047	.0047	.235x 3/4
TQF-2-0068	.0068	.235x 3/4
TQF-2-01	.01	.235x 3/4
TQF-2-015	.015	.235x 3/4
TQF-2-022	.022	.235x 3/4
TQF-2-027	.027	.312x 7/8
TQF-2-033	.033	.312x 7/8
TQF-2-047	.047	.312x 7/8
TQF-2-068	.068	.312x 7/8
TQF-2-1	.1	.400x 7/8
TQF-2-15	.15	.400x1 1/8
TQF-2-22	.22	.400x1 1/8
TQF-2-27	.27	.562x1 1/8
TQF-2-33	.33	.562x1 1/8
TQF-2-47	.47	.562x1 1/8
TQF-2-68	.68	.562x1 1/8
TQF-2-1M	1.0	.670x1 7/8

Cat. No.	Cap. Mf.	Dia. x Length
400 VOLTS DC WORKING		
TQF-4-001	.001	.235x 3/4
TQF-4-0015	.0015	.235x 3/4
TQF-4-0022	.0022	.235x 3/4
TQF-4-0033	.0033	.235x 3/4
TQF-4-0047	.0047	.235x 3/4
TQF-4-0068	.0068	.235x 3/4
TQF-4-01	.01	.235x 3/4
TQF-4-015	.015	.312x 7/8
TQF-4-022	.022	.312x 7/8
TQF-4-027	.027	.312x 7/8
TQF-4-033	.033	.312x 7/8
TQF-4-047	.047	.400x 7/8
TQF-4-068	.068	.400x1 1/8
TQF-4-1	.1	.400x1 1/8
TQF-4-15	.15	.562x1 1/8
TQF-4-22	.22	.562x1 1/8
TQF-4-27	.27	.562x1 1/8
TQF-4-33	.33	.562x1 1/8
TQF-4-47	.47	.670x1 7/8
TQF-4-56	.56	.750x2 1/8
TQF-4-68	.68	.750x2 1/8
TQF-4-1M	1.0	1x1 7/8

Cat. No.	Cap. Mf.	Dia. x Length
200 VOLTS DC WORKING		
TQF-2-001	.001	.235x 3/4
TQF-2-0015	.0015	.235x 3/4
TQF-2-0022	.0022	.235x 3/4

Cat. No.	Cap. Mf.	Dia. x Length
300 VOLTS DC WORKING		
TQF-3-001	.001	.235x 3/4
TQF-3-0015	.0015	.235x 3/4
TQF-3-0022	.0022	.235x 3/4
TQF-3-0033	.0033	.235x 3/4
TQF-3-0047	.0047	.235x 3/4
TQF-3-0068	.0068	.235x 3/4

Cat. No.	Cap. Mf.	Dia. x Length
600 VOLTS DC WORKING		
TQF-6-001	.001	.235x 3/4
TQF-6-0015	.0015	.235x 3/4
TQF-6-0022	.0022	.235x 3/4
TQF-6-0033	.0033	.235x 3/4
TQF-6-0047	.0047	.235x 3/4
TQF-6-0068	.0068	.235x 3/4
TQF-6-01	.01	.312x 7/8
TQF-6-015	.015	.312x 7/8
TQF-6-022	.022	.312x 7/8
TQF-6-027	.027	.400x 7/8
TQF-6-033	.033	.400x 7/8
TQF-6-047	.047	.400x1 1/8
TQF-6-068	.068	.400x1 1/8
TQF-6-1	.1	.562x1 1/8
TQF-6-15	.15	.562x1 1/8
TQF-6-22	.22	.562x1 1/8
TQF-6-27	.27	.670x1 7/8
TQF-6-33	.33	.670x1 7/8
TQF-6-47	.47	.750x2 1/8
TQF-6-68	.68	1x1 7/8

VARIATIONS

CIRCUIT 1	CAPACITOR SECTION INSULATED FROM THE CASE	MIL STYLE	ASTRON TYPE
UNINSULATED BODY	Basic unit in floating construction. Sizes as shown in listings.	CP04 (1)	TQF
SIZES SHOWN IN LISTINGS	Basic unit with tangential soldered-on bracket. Add suffix (A).	CP10 (1)	TQF-A
	Basic unit with soldered-on L type bracket. Add suffix (B).	—	TQF-B
	Screw neck mounting type. Available in same ratings as TQF. Minimum in case diameter .400".	CP11 (1)	TQFS
FOR INSULATED BODY ADD 1/16" TO DIAMETER AND LENGTH OF TQF SIZES LISTED	Internally insulated ("Floating" Construction) with plastic outer sleeve (P).	CP05 (1)	TQFP
CIRCUIT 3	CAPACITOR SECTION GROUNDED TO CASE	MIL STYLE	ASTRON TYPE
UNINSULATED BODY DEDUCT 1/16" FROM LENGTH OF UNITS LISTED	Basic unit—Grounded construction.	CP04 (3)	TQ
	Basic TQ unit with soldered-on tangential (A) bracket.	CP10 (3)	TQ-A
	Basic TQ unit with soldered-on L type bracket (B).	—	TQ-B
	Screw neck mounting type. Available in same ratings as TQ. Minimum case diameter is .400". Stud base mounting type. Available in same ratings as TQ.	CP11 (3)	TQS
FOR INSULATED BODY ADD 1/16" TO DIAMETER OF TQF SIZES LISTED	Grounded construction, with plastic outer sleeve (P).	CP05 (3)	TQP

Cat. No.	Cap. Mf.	Dia. x Length
1000 VOLTS DC WORKING		
TQF-10-001	.001	.400x 7/8
TQF-10-0015	.0015	.400x 7/8
TQF-10-0022	.0022	.400x 7/8
TQF-10-0033	.0033	.400x 7/8
TQF-10-0047	.0047	.400x 7/8
TQF-10-0068	.0068	.400x 7/8
TQF-10-01	.01	.400x 7/8
TQF-10-015	.015	.400x 7/8
TQF-10-022	.022	.400x1 1/8
TQF-10-027	.027	.400x1 1/8
TQF-10-033	.033	.400x1 1/8
TQF-10-047	.047	.562x1 1/8
TQF-10-068	.068	.562x1 1/8
TQF-10-1	.1	.562x1 1/8
TQF-10-15	.15	.670x1 1/8
TQF-10-22	.22	.750x2 1/8
TQF-10-27	.27	.750x2 1/8
TQF-10-33	.33	.750x2 1/8
TQF-10-47	.47	1.000x2 1/8

See complete military listings page 401.



capacitors

ASTRON CORPORATION

EAST NEWARK, N. J.

METEOR* SUBMINIATURE PAPER CAPACITORS

For 125°C. Operation without voltage derating

- Amazingly small sizes, compact and light-weight units.
- Highly dependable operation at temperatures up to 125°C. without voltage derating.
- Exceptional capacitance stability, less than 5% change, over entire temperature range of -65°C. to +125°C. due to use of ASTRON-developed high-temperature impregnant X-250*.
- High insulation resistance, low power factor, unusually low resonance loss. High test voltage indicates extra margin of safety in operation.

- Built to exceed stringent requirements of Specification MIL-C-25A.
- Positive hermetic closure of the metal cases is assured by glass-to-metal solder seal terminals.
- Tubulars supplied in a variety of construction and mounting styles to meet your specific needs: extended foil or inserted tab; capacitor section grounded to case or insulated from case; plastic outer sleeve; with soldered-on tangential or L-type bracket; screw neck mounting style; or stud-base mounting style.

TYPE AQF (50V)

SUBMINIATURE GLASS-TO-METAL SEALED TUBULARS

For Transistorized Applications
50 Volt Rating —
Extended Foil Construction



- SMALLER SIZE THAN LOWEST RATING AVAILABLE IN MIL-C-25A
- MEETS ELECTRICAL AND ENVIRONMENTAL REQUIREMENTS OF MIL-C-25A
- SUPPLIED TO COMPLY WITH CHARACTERISTICS E OR K OF MIL-C-25A
- CONTINUOUS OPERATION OVER TEMPERATURE RANGE OF -65°C. TO 125°C. WITHOUT DERATING
- EXCELLENT CAPACITANCE TEMPERATURE STABILITY

Designed to fill the need for a high quality capacitor for use primarily in transistor and other low voltage applications. These capacitors offer the outstanding advantage of smaller sizes without any loss in performance or electrical and physical characteristics in accordance with MIL-C-25A.

1000 VOLTS DC WORKING

AQF-.5-.027	.027	.235x $\frac{3}{4}$
AQF-.5-.068	.068	.312x $\frac{3}{4}$
AQF-.5-1	.1	.312x $\frac{3}{4}$
AQF-.5-27	.27	.400x1 $\frac{1}{4}$
AQF-.5-47	.47	.500x1 $\frac{1}{4}$
AQF-.5-1M	1.0	.562x1 $\frac{1}{4}$
AQF-.5-2M	2.0	.750x2 $\frac{1}{4}$

METEOR* TYPE AQF (CP08)

Glass-to-Metal Sealed SUBMINIATURE TUBULARS



Cat. No. Cap. Mf. Dia. x Lgth.

100 VOLTS DC WORKING

AQF-1-001	.001	.235x $\frac{3}{4}$
AQF-1-0015	.0015	.235x $\frac{3}{4}$
AQF-1-0022	.0022	.235x $\frac{3}{4}$
AQF-1-0033	.0033	.235x $\frac{3}{4}$
AQF-1-0047	.0047	.235x $\frac{3}{4}$
AQF-1-01	.01	.235x $\frac{3}{4}$
AQF-1-015	.015	.235x $\frac{3}{4}$
AQF-1-022	.022	.312x $\frac{3}{4}$
AQF-1-033	.033	.312x $\frac{3}{4}$
AQF-1-047	.047	.312x $\frac{3}{4}$
AQF-1-068	.068	.400x $\frac{1}{4}$
AQF-1-1	.1	.400x $\frac{1}{4}$
AQF-1-15	.15	.400x1 $\frac{1}{4}$
AQF-1-22	.22	.400x1 $\frac{1}{4}$
AQF-1-27	.27	.562x1 $\frac{1}{4}$
AQF-1-33	.33	.562x1 $\frac{1}{4}$
AQF-1-47	.47	.562x1 $\frac{1}{4}$
AQF-1-56	.56	.562x1 $\frac{1}{4}$
AQF-1-68	.68	.562x1 $\frac{1}{4}$
AQF-1-1M	1.0	.670x1 $\frac{1}{4}$

200 VOLTS DC WORKING

AQF-2-001	.001	.235x $\frac{3}{4}$
AQF-2-0015	.0015	.235x $\frac{3}{4}$
AQF-2-0022	.0022	.235x $\frac{3}{4}$
AQF-2-0033	.0033	.235x $\frac{3}{4}$
AQF-2-0047	.0047	.235x $\frac{3}{4}$
AQF-2-0068	.0068	.235x $\frac{3}{4}$

CP08* and CP09* MIL C-25A

Cat. No.	Cap. Mf.	Dia. x Lgth.
AQF-2-01	.01	.312x $\frac{3}{4}$
AQF-2-015	.015	.312x $\frac{3}{4}$
AQF-2-022	.022	.312x $\frac{3}{4}$
AQF-2-033	.033	.312x $\frac{3}{4}$
AQF-2-047	.047	.400x $\frac{1}{4}$
AQF-2-056	.056	.400x $\frac{1}{4}$
AQF-2-068	.068	.400x $\frac{1}{4}$
AQF-2-1	.1	.400x1 $\frac{1}{4}$
AQF-2-15	.15	.400x1 $\frac{1}{4}$
AQF-2-22	.22	.562x1 $\frac{1}{4}$
AQF-2-27	.27	.562x1 $\frac{1}{4}$
AQF-2-33	.33	.562x1 $\frac{1}{4}$
AQF-2-47	.47	.562x1 $\frac{1}{4}$
AQF-2-56	.56	.670x1 $\frac{1}{4}$
AQF-2-68	.68	.670x1 $\frac{1}{4}$
AQF-2-1M	1.0	.750x2 $\frac{1}{4}$

300 VOLTS DC WORKING

AQF-3-001	.001	.235x $\frac{3}{4}$
AQF-3-0015	.0015	.235x $\frac{3}{4}$
AQF-3-0022	.0022	.235x $\frac{3}{4}$
AQF-3-0033	.0033	.235x $\frac{3}{4}$
AQF-3-0047	.0047	.235x $\frac{3}{4}$
AQF-3-01	.01	.312x $\frac{3}{4}$
AQF-3-015	.015	.312x $\frac{3}{4}$
AQF-3-022	.022	.312x $\frac{3}{4}$
AQF-3-033	.033	.400x $\frac{1}{4}$
AQF-3-047	.047	.400x $\frac{1}{4}$
AQF-3-068	.068	.400x1 $\frac{1}{4}$
AQF-3-1	.1	.400x1 $\frac{1}{4}$
AQF-3-15	.15	.562x1 $\frac{1}{4}$
AQF-3-22	.22	.562x1 $\frac{1}{4}$
AQF-3-27	.27	.562x1 $\frac{1}{4}$
AQF-3-33	.33	.562x1 $\frac{1}{4}$
AQF-3-47	.47	.670x1 $\frac{1}{4}$
AQF-3-56	.56	.750x2 $\frac{1}{4}$
AQF-3-68	.68	.750x2 $\frac{1}{4}$
AQF-3-1M	1.0	.750x2 $\frac{1}{4}$

400 VOLTS DC WORKING

AQF-4-001	.001	.235x $\frac{3}{4}$
AQF-4-0015	.0015	.235x $\frac{3}{4}$
AQF-4-0022	.0022	.235x $\frac{3}{4}$
AQF-4-0033	.0033	.235x $\frac{3}{4}$
AQF-4-0047	.0047	.312x $\frac{3}{4}$
AQF-4-0068	.0068	.312x $\frac{3}{4}$
AQF-4-01	.01	.312x $\frac{3}{4}$
AQF-4-015	.015	.312x $\frac{3}{4}$
AQF-4-022	.022	.400x $\frac{1}{4}$
AQF-4-033	.033	.400x $\frac{1}{4}$
AQF-4-047	.047	.400x1 $\frac{1}{4}$
AQF-4-068	.068	.400x1 $\frac{1}{4}$
AQF-4-1	.1	.562x1 $\frac{1}{4}$
AQF-4-15	.15	.562x1 $\frac{1}{4}$
AQF-4-22	.22	.562x1 $\frac{1}{4}$
AQF-4-27	.27	.670x1 $\frac{1}{4}$
AQF-4-33	.33	.670x1 $\frac{1}{4}$
AQF-4-47	.47	.750x2 $\frac{1}{4}$

600 VOLTS DC WORKING

AQF-6-001	.001	.235x $\frac{3}{4}$
AQF-6-0015	.0015	.235x $\frac{3}{4}$
AQF-6-0022	.0022	.235x $\frac{3}{4}$
AQF-6-0033	.0033	.312x $\frac{3}{4}$
AQF-6-0047	.0047	.312x $\frac{3}{4}$
AQF-6-0068	.0068	.312x $\frac{3}{4}$
AQF-6-01	.01	.312x $\frac{3}{4}$
AQF-6-015	.015	.400x $\frac{1}{4}$
AQF-6-022	.022	.400x $\frac{1}{4}$
AQF-6-033	.033	.400x1 $\frac{1}{4}$
AQF-6-047	.047	.400x1 $\frac{1}{4}$
AQF-6-068	.068	.562x1 $\frac{1}{4}$
AQF-6-1	.1	.562x1 $\frac{1}{4}$
AQF-6-15	.15	.562x1 $\frac{1}{4}$
AQF-6-22	.22	.670x1 $\frac{1}{4}$
AQF-6-27	.27	.750x2 $\frac{1}{4}$
AQF-6-33	.33	.750x2 $\frac{1}{4}$
AQF-6-47	.47	.750x2 $\frac{1}{4}$

1000 VOLTS DC WORKING

AQF-10-001	.001	.400x $\frac{1}{4}$
AQF-10-0015	.0015	.400x $\frac{1}{4}$
AQF-10-0022	.0022	.400x $\frac{1}{4}$
AQF-10-0033	.0033	.400x $\frac{1}{4}$
AQF-10-0047	.0047	.400x $\frac{1}{4}$
AQF-10-0068	.0068	.400x $\frac{1}{4}$
AQF-10-01	.01	.400x $\frac{1}{4}$
AQF-10-015	.015	.400x1 $\frac{1}{4}$
AQF-10-022	.022	.400x1 $\frac{1}{4}$
AQF-10-033	.033	.562x1 $\frac{1}{4}$
AQF-10-047	.047	.562x1 $\frac{1}{4}$
AQF-10-068	.068	.562x1 $\frac{1}{4}$
AQF-10-1	.1	.670x1 $\frac{1}{4}$
AQF-10-15	.15	.670x1 $\frac{1}{4}$
AQF-10-22	.22	.750x2 $\frac{1}{4}$
AQF-10-33	.33	1.000x2 $\frac{1}{4}$
AQF-10-47	.47	1.000x2 $\frac{1}{4}$

VARIATIONS

CIRCUIT 1	CAPACITOR SECTION INSULATED FROM THE CASE	MIL STYLE	ASTRON TYPE
UNINSULATED BODY SIZES SHOWN IN LISTINGS	Basic unit in floating construction. Sizes as shown in listings.	CP08 (1)	AQF
	Basic unit with tangential soldered-on bracket. Add suffix (A).	—	AQF-A
	Basic unit with soldered-on L type bracket. Add suffix (B).	—	AQF-B
	Screw neck mounting type. Available in same ratings as AQF. Minimum in case diameter .400".	—	AQFS
FOR INSULATED BODY ADD $\frac{1}{16}$ " TO DIAMETER AND LENGTH OF AQF SIZES LISTED	Internally insulated ("floating" construction) with plastic outer sleeve (P).	CP09 (1)	AQFP
CIRCUIT 3	CAPACITOR SECTION GROUNDED TO CASE	MIL STYLE	ASTRON TYPE
UNINSULATED BODY DEDUCT $\frac{1}{16}$ " FROM LENGTH OF UNITS LISTED	Basic unit—Grounded construction.	CP08 (3)	AQ
	Basic AQ unit with soldered-on tangential (A) bracket.	—	AQ-A
	Basic AQ unit with soldered-on L type bracket (B). Screw neck mounting type. Available in same ratings as AQ. Minimum case diameter is .400".	—	AQ-B
	Stud base mounting type. Available in same ratings as AQ.	—	AQV
FOR INSULATED BODY ADD $\frac{1}{16}$ " TO DIAMETER OF AQF SIZES LISTED	Grounded construction, with plastic outer sleeve (P).	CP09 (3)	AQP

* See complete military listings page 402.



capacitors

ASTRON CORPORATION

EAST NEWARK, N. J.

METALITE®

Metallized Paper Capacitors for 65°C. and 85°C. Operation

METALITE CAPACITORS

Feature:

- Ultra-compact sizes. Light weight. Ideal for miniaturization applications, and portable, mobile and airborne equipment.
- As much as 75% reduction in size over conventional paper-foil capacitors.
- Self-healing — the ability to withstand high dielectric stresses. METALITE capacitors can be subjected to momentary overvoltages and surges over and over again without danger of permanent failure.
- Temperature Range (Metal cased units) -65°C. to +85°C.; (cardboard cased Type ML) -55°C. to +65°C.
- Excellent RF characteristics. Low RF impedance due to small sizes and short current path. Low power factor.
- Wide variety of applications: RF and audio bypass circuits, noise suppression filters and systems, instruments, and various types of communication equipment where small size, light weight and the self-healing feature are especially desirable characteristics to meet specific circuit requirements.
- Interchangeability with standard paper-foil capacitor designs when operated within published ratings and circuit requirements.

METALITE® TYPE MQCF

85°C. Operation



Glass-to-Metal Sealed SUBMINIATURE TUBULARS

- Smallest paper capacitor type available.
- Temperature Range —65°C. to +85°C.
- Non-inductively wound. Mineral wax impregnated and filled. Tinned, non-ferrous metal cases.
- Capacitor section grounded to case (Type MQC) with glass-to-metal terminal at one end. Available also with capacitor section insulated from case (Type MQCF) with glass-to-metal terminal at each end.
- Lead length 1 3/4" minimum. Standard capacitance tolerance: ±20%.

VARIATIONS AVAILABLE

CAPACITOR SECTION INSULATED FROM CASE

Glass-to-Metal Terminal at both ends Circuit 1

	TYPE & DESCRIPTION
UNINSULATED BODY	MQCF — Basic internally insulated unit as listed.
	MQCF-A — with tangential (A) soldered-on bracket.
	MQCF-B — with L-type (B) soldered on bracket.
	MQCFS — Screw neck vertical-mounting type. Same ratings as MQC. Minimum diameter .400".
INSULATED BODY Add 1/16" to dia. and length of MQCF sizes listed.	MQCFP — Basic internally insulated unit with plastic outer sleeve (P).

CAPACITOR SECTION GROUNDED TO CASE

Glass-to-Metal Terminal at one end Circuit 3

	TYPE & DESCRIPTION
UNINSULATED BODY Sizes shown in listings Deduct 1/16" from length of MQCF sizes listed.	MQC — Basic type.
	MQC-A — with tangential (A) soldered-on bracket.
	MQC-B — with L-type (B) soldered-on bracket.
	MQCS — screw neck vertical-mounting type. Same ratings as MQC. Minimum dia. .400".
	MQV — Stud base vertical-mounting type. Same ratings and sizes as Type MQC.
INSULATED BODY Add 1/16" to dia. of MQCF sizes listed.	MQCP — Basic grounded construction as listed with plastic outer sleeve (P).

Cat. No. Cap. Mf. Dia. x Lgth.

150 VOLTS DC WORKING

MQCF-1.5-4M	4.0	1x1 1/8
MQCF-1.5-6M	6.0	1x1 1/8
MQCF-1.5-8M	8.0	1x2 3/8

200 VOLTS DC WORKING

MQCF-2-01	.01	.235x1 1/8
MQCF-2-02	.02	.235x1 1/8
MQCF-2-033	.033	.235x1 1/8
MQCF-2-04	.04	.235x1 1/8
MQCF-2-05	.05	.235x1 1/8
MQCF-2-1	.1	.312x1 1/8
MQCF-2-15	.15	.400x1 1/8
MQCF-2-2	.2	.400x1 1/8
MQCF-2-25	.25	.400x1 1/8
MQCF-2-33	.33	.400x1 1/8
MQCF-2-5	.5	.400x1 1/8
MQCF-2-68	.68	.562x1 1/8
MQCF-2-1M	1.0	.562x1 1/8
MQCF-2-1.5M	1.5	.562x1 1/8
MQCF-2-2M	2.0	.562x1 1/8

400 VOLTS DC WORKING

MQCF-4-01	.01	.235x1 1/8
MQCF-4-02	.02	.235x1 1/8
MQCF-4-03	.03	.312x1 1/8
MQCF-4-04	.04	.312x1 1/8
MQCF-4-05	.05	.312x1 1/8
MQCF-4-1	.1	.400x1 1/8
MQCF-4-15	.15	.562x1 1/8
MQCF-4-2	.2	.562x1 1/8
MQCF-4-25	.25	.562x1 1/8
MQCF-4-33	.33	.562x1 1/8
MQCF-4-5	.5	.562x1 1/8
MQCF-4-68	.68	.670x1 1/8
MQCF-4-1M	1.0	.670x2 3/8
MQCF-4-1.5M	1.5	1x2 3/8
MQCF-4-2M	2.0	1x2 3/8
MQCF-4-4M	4.0	1 1/8x2 3/8

600 VOLTS DC WORKING

MQCF-6-01	.01	.235x1 1/8
MQCF-6-015	.015	.312x1 1/8
MQCF-6-02	.02	.312x1 1/8
MQCF-6-03	.03	.312x1 1/8
MQCF-6-04	.04	.312x1 1/8
MQCF-6-05	.05	.312x1 1/8
MQCF-6-1	.1	.400x1 1/8
MQCF-6-15	.15	.562x1 1/8
MQCF-6-22	.22	.562x1 1/8
MQCF-6-25	.25	.562x1 1/8
MQCF-6-33	.33	.670x1 1/8
MQCF-6-5	.5	.670x1 1/8
MQCF-6-68	.68	.670x2 3/8
MQCF-6-1M	1.0	.750x2 3/8
MQCF-6-2M	2.0	1x2 3/8

STANDARD CAPACITANCE TOLERANCE: ±20%.



capacitors

ASTRON CORPORATION

EAST NEWARK, N. J.

TYPE MQZF

Transistor Metallized Paper Capacitors



Catalog Number	WVDC	Cap. Mfd.	Dia. $\pm 1/64''$ (Inches) D	Length $\pm 1/32''$ (Inches) L
MQZF .5-047	50	.047	.195	11/16
MQZF .5-068	50	.068	.195	13/16
MQZF .5-1	50	.1	.235	11/16
MQZF .5-15	50	.15	.235	13/16
MQZF .5-22	50	.22	.235	1
MQZF .5-33	50	.33	.312	1
MQZF .5-47	50	.47	.312	1
MQZF .5-68	50	.68	.400	1
MQZF .5-1M	50	1.0	.400	1
MQZF .5-1.5M	50	1.5	.500	1-1/8
MQZF .5-2M	50	2.0	.562	1-1/8
MQZF .5-4M	50	4.0	.670	1-11/32
MQZF .5-6M	50	6.0	.670	1-15/16
MQZF .5-8M	50	8.0	.750	1-15/16

NOTE:

- Standard MQZF is supplied in "floating" construction.
- Grounded construction is available upon request. Specify Type MQZ. Subtract 1/16" from length of sizes listed.
- For plastic insulating outer sleeve (P) specify MQZFP or MQZP.
 - (A) For floating type add 1/16" to diameter and length of sizes listed.
 - (B) For grounded units add 1/16" to diameter of sizes listed.
- Standard tolerance of Type MQZF is $\pm 20\%$; special tolerances of $\pm 10\%$ and $\pm 5\%$ available upon request. Specify by adding tolerance numerals to part number. Example: MQZF-5-1M-10.

METALITE® TYPE ML

Cardboard Tubulars
65°C. Operation



- Temperature Range -55°C. to $+65^{\circ}\text{C.}$
- Microcrystalline hydrocarbon wax impregnated.
- Sturdy, wax-impregnated cardboard tubes. Strong terminal connections, metal end caps. Units can be point-to-point connected and supported by own leads.
- Wire leads $1\frac{1}{2}''$ long.
- Overall mineral wax coating for added protection against moisture and humidity.
- Standard capacitance tolerance: -20% $+30\%$.

Catalog No.	Cap. Mfd.	Diameter x Length	
200 VOLTS DC WORKING			
ML-2-01	.01	3/8	5/8
ML-2-02	.02	3/8	5/8
ML-2-03	.03	3/8	5/8
ML-2-05	.05	3/8	5/8
ML-2-1	.1	3/8	5/8
ML-2-25	.25	15/32	5/8
ML-2-5	.5	15/32	1-1/8
ML-2-1M	1.0	9/16	1-1/8
ML-2-2M	2.0	5/8	1-5/8
400 VOLTS DC WORKING			
ML-4-01	.01	3/8	5/8
ML-4-02	.02	3/8	5/8
ML-4-03	.03	3/8	5/8
ML-4-05	.05	15/32	5/8
ML-4-1	.1	15/32	1-1/8
ML-4-25	.25	9/16	1-1/8
ML-4-5	.5	5/8	1-5/8
ML-4-1M	1.0	23/32	2-1/8
600 VOLTS DC WORKING			
ML-6-01	.01	3/8	5/8
ML-6-02	.02	3/8	5/8
ML-6-03	.03	15/32	5/8
ML-6-05	.05	15/32	5/8
ML-6-1	.1	15/32	1-1/8
ML-6-25	.25	5/8	1-1/8
ML-6-5	.5	23/32	1-5/8
ML-6-1M	1.0	23/32	2-1/8

Standard Capacitance Tolerance: -20% $+30\%$.



capacitors

ASTRON CORPORATION

EAST NEWARK, N. J.

METALITE® TYPE MRF Metal Cased Tubulars

85°C. Operation



- Temperature Range -65°C. to +85°C.
- Mineral wax impregnated and filled.
- Hermetically sealed. Neoprene-phenolic end discs.
- Type MRF supplied with capacitor section insulated from case. Also available with section grounded to case (Type MRG).
- Lead length 1 1/4" minimum.
- Standard capacitance tolerance: ±20%.

Cat. No.	Cap. Mf.	Dia. x Length
150 VOLTS DC WORKING		
MRF-1.5-4M	4.0	1 x 1 1/8
MRF-1.5-6M	6.0	1 x 1 1/8
MRF-1.5-8M	8.0	1 1/4 x 1 1/8
MRF-1.5-10M	10.0	1 1/4 x 1 1/8

Cat. No.	Cap. Mf.	Dia. x Length
200 VOLTS DC WORKING		
MRF-2-05	.05	3/8 x 3/8
MRF-2-1	.1	1/2 x 3/8
MRF-2-25	.25	1/2 x 3/8
MRF-2-5	.5	1/2 x 3/8
MRF-2-1M	1.0	.670 x 1 3/8
MRF-2-2M	2.0	.670 x 1 3/8

Cat. No.	Cap. Mf.	Dia. x Length
400 VOLTS DC WORKING		
MRF-4-03	.03	3/8 x 3/8
MRF-4-05	.05	1/2 x 3/8
MRF-4-1	.1	1/2 x 1 1/8
MRF-4-25	.25	.670 x 1 3/8
MRF-4-5	.5	.670 x 1 3/8
MRF-4-1M	1.0	3/4 x 2 3/8
MRF-4-2M	2.0	1 x 2 3/8
MRF-4-3M	3.0	1 1/4 x 2 3/8
MRF-4-4M	4.0	1 1/4 x 2 3/8

Cat. No.	Cap. Mf.	Dia. x Length
600 VOLTS DC WORKING		
MRF-6-01	.01	3/8 x 3/8
MRF-6-02	.02	1/2 x 3/8
MRF-6-03	.03	1/2 x 3/8
MRF-6-05	.05	1/2 x 3/8
MRF-6-1	.1	1/2 x 1 1/8
MRF-6-2	.2	.670 x 1 3/8
MRF-6-25	.25	.670 x 1 3/8
MRF-6-5	.5	.670 x 1 3/8
MRF-6-1M	1.0	3/4 x 2 3/8
MRF-6-2M	2.0	1 1/4 x 2 3/8
MRF-6-3M	3.0	1 1/4 x 2 3/8

Standard capacitance tolerance: ±20%.
Other tolerances are available.

VARIATIONS AVAILABLE

CAPACITOR SECTION INSULATED FROM CASE CIRCUIT 1

TYPE AND DESCRIPTION	
UNINSULATED BODY Sizes shown in listings	
MRF	— Basic type as listed.
MRF-Y	— with radial (Y) bracket.
MRF-A	— with tangential (A) soldered-on bracket.
INSULATED BODY Add 3/16" to length and 1/16" to dia.	
MRFP	— Basic type, with plastic sleeve (P).
MRFP-Y	— with plastic sleeve (P) and radial (Y) bracket.

CAPACITOR SECTION GROUNDED TO CASE CIRCUIT 3

TYPE AND DESCRIPTION	
UNINSULATED BODY deduct 3/32" from length shown in listings	
MRG	— Basic grounded section unit.
MRG-Y	— with radial (Y) bracket.
MRG-A	— with tangential (A) soldered-on bracket.
INSULATED BODY add 3/32" to length and 1/16" to dia. shown in listings	
MRGP	— Basic grounded section type with plastic sleeve (P).
MRGP-Y	— with plastic sleeve (P) and radial (Y) bracket.

METALITE® TYPE MD Bathtub Capacitors

85°C. Operation



- Units meet MIL tests for moisture resistance, thermal cycle immersion and vibration.
- Single units have two terminals; dual units have three terminals, one terminal common negative.
- Standard position of terminals on side. Also available with terminals on top (Type MDT) or bottom (Type MDB).
- Standard capacitance tolerance: ±20%.
- Compact sizes. Light weight. Up to 75% reduction in sizes over conventional paper-foil capacitors.
- Temperature Range -65°C. to +85°C.
- Space-saving metallized paper dielectric makes possible wider choice of high capacitance ratings than ever before obtainable in bathtub cases.
- Hermetically sealed. Silicone rubber compression seal lug terminals.

Cat. No.	Cap. Mf.	L. x W. x H.	Mtg. Ctr.
150 VOLTS DC WORKING			
MD-1.5-4M	4.0	1 3/4 x 1 x 3/8	2 1/4
MD-1.5-6M	6.0	2 x 1 3/4 x 3/8	2 3/4
MD-1.5-8M	8.0	2 x 2 x 3/8	2 3/4
MD-1.5-10M	10.0	2 x 2 x 3/8	2 3/4
MD-1.5-12M	12.0	2 x 2 x 1	2 3/4
MD-1.5-16M	15.0	2 x 2 x 1 1/8	2 3/4
MD-1.5-18M	18.0	2 x 2 x 1 1/8	2 3/4
MD-1.5-2x4M	4.0-4.0	2 x 2 x 1 1/8	2 3/4
MD-1.5-2x6M	6.0-6.0	2 x 2 x 1	2 3/4

Cat. No.	Cap. Mf.	L. x W. x H.	Mtg. Ctr.
200 VOLTS DC WORKING			
MD-2-5	.5	1 3/4 x 1 x 3/8	2 1/4
MD-2-1M	1.0	1 3/4 x 1 x 3/8	2 1/4
MD-2-2M	2.0	1 3/4 x 1 x 3/8	2 1/4
MD-2-2x1M	1.0-1.0	1 3/4 x 1 x 3/8	2 1/4
MD-2-2x2M	2.0-2.0	1 3/4 x 1 x 3/8	2 1/4

Cat. No.	Cap. Mf.	L. x W. x H.	Mtg. Ctr.
400 VOLTS DC WORKING			
MD-4-25	.25	1 3/4 x 1 x 3/8	2 1/4
MD-4-5	.5	1 3/4 x 1 x 3/8	2 1/4
MD-4-1M	1.0	1 3/4 x 1 x 3/8	2 1/4
MD-4-2M	2.0	2 x 1 3/4 x 3/8	2 1/4
MD-4-4M	4.0	2 x 2 x 1 1/8	2 1/4
MD-4-6M	6.0	2 x 2 x 1 1/8	2 1/4
MD-4-2x5	.5-.5	1 3/4 x 1 x 3/8	2 1/4
MD-4-2x1M	1.0-1.0	2 x 1 3/4 x 3/8	2 1/4
MD-4-2x2M	2.0-2.0	2 x 2 x 1 1/8	2 1/4

Cat. No.	Cap. Mf.	L. x W. x H.	Mtg. Ctr.
600 VOLTS DC WORKING			
MD-6-1	.1	1 3/4 x 1 x 3/8	2 1/4
MD-6-25	.25	1 3/4 x 1 x 3/8	2 1/4
MD-6-5	.5	1 3/4 x 1 x 3/8	2 1/4
MD-6-1M	1.0	1 3/4 x 1 1/4 x 3/8	2 1/4
MD-6-2M	2.0	2 x 2 x 1	2 1/4
MD-6-3M	3.0	2 x 2 x 1 1/8	2 1/4
MD-6-4M	4.0	2 x 2 x 1 1/8	2 1/4
MD-6-2x25	.25-.25	1 3/4 x 1 x 3/8	2 1/4
MD-6-2x5	.5-.5	1 3/4 x 1 1/4 x 3/8	2 1/4
MD-6-2x1M	1.0-1.0	2 x 2 x 1	2 1/4

STANDARD CAPACITANCE TOLERANCE: ±20%.

METALITE® TYPE MXJ in Terneplate Cases

85°C. Operation



Cat. No.	Cap. Mf.	L. x W. x H.	Mtg. Ctr.	Cat. No.	Cap. Mf.	L. x W. x H.	Mtg. Ctr.
600 VOLTS DC WORKING				150 VOLTS DC WORKING			
MXJ-6-1M	1.0	1 3/4 x 1 x 1 1/8	2	MXJ-1.5-4M	4.0	1 3/4 x 1 x 1 1/8	2
MXJ-6-2M	2.0	1 3/4 x 1 x 2 3/8	2	MXJ-1.5-10M	10.0	1 3/4 x 1 x 2 3/8	2
MXJ-6-4M	4.0	1 3/4 x 1 x 3 3/8	2	MXJ-1.5-12M	12.0	1 3/4 x 1 x 2 3/8	2
MXJ-6-6M	6.0	1 3/4 x 1 x 4 3/8	2	MXJ-1.5-15M	15.0	1 3/4 x 1 x 3 3/8	2
MXJ-6-8M	8.0	2 1/4 x 1 1/8 x 3 3/8	2 3/4	MXJ-1.5-20M	20.0	1 3/4 x 1 x 4 3/8	2
MXJ-6-10M	10.0	2 1/4 x 1 1/8 x 4 3/8	2 3/4	MXJ-1.5-25M	25.0	2 1/4 x 1 1/8 x 3 3/8	2 3/4
MXJ-6-15M	15.0	3 3/4 x 1 1/4 x 4 3/8	4	MXJ-1.5-30M	30.0	2 1/4 x 1 1/8 x 4 3/8	2 3/4
MXJ-6-20M	20.0	3 3/4 x 1 1/4 x 4 3/8	4	MXJ-1.5-50M	50.0	2 1/4 x 1 1/8 x 4 3/8	2 3/4
100 VOLTS DC WORKING				400 VOLTS DC WORKING			
MXJ-1-100M	100.0	3 3/4 x 1 1/4 x 4 3/8	4	MXJ-4-2M	2.0	1 3/4 x 1 x 2 1/8	2
				MXJ-4-4M	4.0	1 3/4 x 1 x 2 1/8	2
				MXJ-4-6M	6.0	1 3/4 x 1 x 3 3/8	2
				MXJ-4-8M	8.0	1 3/4 x 1 x 4 3/8	2
				MXJ-4-10M	10.0	2 1/4 x 1 1/8 x 3 3/8	2 3/4
				MXJ-4-20M	20.0	2 1/4 x 1 1/8 x 4 3/8	2 3/4
				MXJ-4-30M	30.0	3 3/4 x 1 1/4 x 4 3/8	4

STANDARD CAPACITANCE TOLERANCE: ±20%. Other tolerances are available.



capacitors

ASTRON CORPORATION

EAST NEWARK, N. J.

NEW COMET* TYPE MBP

Molded Plastic Metallized Paper Tubulars

125°C. Operation



- First, molded plastic metallized paper tubular capacitor . . . ever!
- Tough, metallized paper capacitor sections for miniature size, self-healing characteristics, light weight and dependable operation.
- Impervious immersion-proof shell is unaffected by any heat and/or moisture condition.
- Exclusive bonded seal locks out environmental effects . . . locks in performance.
- Solid thermosetting impregnant for reliable operation over temperature range of $-65^{\circ}\text{C}.$ to $\pm 125^{\circ}\text{C}.$. . . vacuum impregnation guarantees uniformity of units.
- Firmly implanted leads won't pull or melt out . . . makes soldering in tight places easy!

Cat. No.	Cap. Mf.	Dia. x Length	List Price
MBP-2-01	.01	$\frac{3}{8}$ x 1	\$.65
MBP-2-02	.02	$\frac{3}{8}$ x 1	.65
MBP-2-03	.03	$\frac{3}{8}$ x 1	.65
MBP-2-047	.047	$\frac{3}{8}$ x 1	.65
MBP-2-05	.05	$\frac{3}{8}$ x 1	.65
MBP-2-1	.1	$\frac{3}{8}$ x 1	.70
MBP-2-2	.2	$\frac{3}{8}$ x $1\frac{1}{4}$.80
MBP-2-25	.25	$\frac{3}{8}$ x $1\frac{1}{4}$.90
MBP-2-33	.33	$\frac{7}{16}$ x $1\frac{1}{4}$.95
MBP-2-47	.47	$\frac{1}{2}$ x $1\frac{5}{8}$	1.05
MBP-2-5	.5	$\frac{1}{2}$ x $1\frac{5}{8}$	1.05
MBP-2-68	.68	$\frac{1}{2}$ x $1\frac{5}{8}$	1.20
MBP-2-1M	1.0	$\frac{5}{8}$ x $1\frac{7}{8}$	1.30
MBP-2-2M	2.0	$\frac{5}{8}$ x $1\frac{7}{8}$	1.80
MBP-4-01	.01	$\frac{3}{8}$ x 1	.70
MBP-4-02	.02	$\frac{3}{8}$ x 1	.70
MBP-4-03	.03	$\frac{3}{8}$ x 1	.70
MBP-4-047	.047	$\frac{3}{8}$ x $1\frac{1}{4}$.70
MBP-4-05	.05	$\frac{3}{8}$ x $1\frac{1}{4}$.70
MBP-4-1	.1	$\frac{7}{16}$ x $1\frac{1}{4}$.80
MBP-4-2	.2	$\frac{1}{2}$ x $1\frac{5}{8}$.90
MBP-4-25	.25	$\frac{1}{2}$ x $1\frac{5}{8}$	1.00
MBP-4-33	.33	$\frac{5}{8}$ x $1\frac{7}{8}$	1.10
MBP-4-47	.47	$\frac{5}{8}$ x $1\frac{7}{8}$	1.15
MBP-4-5	.5	$\frac{5}{8}$ x $1\frac{7}{8}$	1.15
MBP-6-01	.01	$\frac{3}{8}$ x 1	.70
MBP-6-02	.02	$\frac{3}{8}$ x 1	.70
MBP-6-03	.03	$\frac{3}{8}$ x $1\frac{1}{4}$.80
MBP-6-047	.047	$\frac{3}{8}$ x $1\frac{1}{4}$.80
MBP-6-05	.05	$\frac{3}{8}$ x $1\frac{1}{4}$.80
MBP-6-068	.068	$\frac{7}{16}$ x $1\frac{1}{4}$.85
MBP-6-1	.1	$\frac{1}{2}$ x $1\frac{5}{8}$.90
MBP-6-2	.2	$\frac{5}{8}$ x $1\frac{7}{8}$	1.00
MBP-6-25	.25	$\frac{5}{8}$ x $1\frac{7}{8}$	1.10

*TRADE MARK

METALITE® HY-MET* TYPE MLL

Cardboard Tubulars

85°C. Operation



- Sturdy cardboard cased units. Temperature Range -55° to $+100^{\circ}\text{C}.$ Solid thermosetting impregnant.
- Exceptional strength. Metal end caps. Units can be point-to-point connected and supported by own leads. Leads $1\frac{1}{2}$ " minimum length.
- Overall mineral wax coat provides added protection against moisture and humidity.
- Standard capacitance tolerance: -20% $+30\%$.

200 VOLTS DC WORKING

Cat. No.	Cap. Mf.	Dia. x Length
MLL-2-01	.01	$\frac{3}{8}$ x $\frac{5}{8}$
MLL-2-02	.02	$\frac{3}{8}$ x $\frac{5}{8}$
MLL-2-03	.03	$\frac{3}{8}$ x $\frac{5}{8}$
MLL-2-05	.05	$\frac{3}{8}$ x $\frac{5}{8}$
MLL-2-1	.1	$\frac{3}{8}$ x $\frac{5}{8}$
MLL-2-25	.25	$\frac{1}{2}$ x $\frac{5}{8}$
MLL-2-5	.5	$\frac{1}{2}$ x $1\frac{1}{8}$
MLL-2-1M	1.0	$\frac{5}{8}$ x $1\frac{1}{8}$
MLL-2-2M	2.0	$\frac{5}{8}$ x $1\frac{1}{8}$

400 VOLTS DC WORKING

Cat. No.	Cap. Mf.	Dia. x Length
MLL-4-01	.01	$\frac{3}{8}$ x $\frac{5}{8}$
MLL-4-02	.02	$\frac{3}{8}$ x $\frac{5}{8}$
MLL-4-03	.03	$\frac{3}{8}$ x $\frac{5}{8}$
MLL-4-05	.05	$\frac{1}{2}$ x $\frac{5}{8}$
MLL-4-1	.1	$\frac{1}{2}$ x $1\frac{1}{8}$
MLL-4-25	.25	$\frac{5}{8}$ x $1\frac{1}{8}$
MLL-4-5	.5	$\frac{5}{8}$ x $1\frac{5}{8}$
MLL-4-1M	1.0	$\frac{3}{4}$ x $2\frac{1}{8}$

600 VOLTS DC WORKING

Cat. No.	Cap. Mf.	Dia. x Length
MLL-6-01	.01	$\frac{3}{8}$ x $\frac{5}{8}$
MLL-6-02	.02	$\frac{3}{8}$ x $\frac{5}{8}$
MLL-6-03	.03	$\frac{1}{2}$ x $\frac{5}{8}$
MLL-6-05	.05	$\frac{1}{2}$ x $\frac{5}{8}$
MLL-6-1	.1	$\frac{1}{2}$ x $1\frac{1}{8}$
MLL-6-25	.25	$\frac{5}{8}$ x $1\frac{1}{8}$
MLL-6-5	.5	$\frac{3}{4}$ x $1\frac{5}{8}$
MLL-6-1M	1.0	$\frac{3}{4}$ x $2\frac{1}{8}$

CAPACITANCE TOLERANCE: -20% $+30\%$.

*TRADE MARK

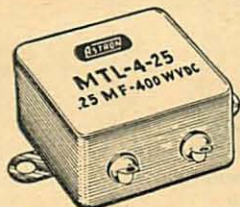


capacitors

ASTRON CORPORATION

EAST NEWARK, N. J.

METALITE® HY-MET* TYPE MTL
Subminiature Bathtub Capacitors 125°C. Operation



Cat. No.	Cap. Mf.	L. x W x H.
200 VOLTS DC WORKING		
MTL-2-1	.1	1 1/8 x 1 x 1 1/2
MTL-2-25	.25	1 1/8 x 1 x 1 1/2
MTL-2-5	.5	1 1/8 x 1 x 1 1/2
MTL-2-1M	1.0	1 1/8 x 1 x 1 1/2
MTL-2-2M	2.0	1 1/8 x 1 x 1 1/4

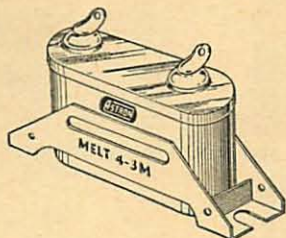
Cat. No.	Cap. Mf.	L. x W x H.
400 VOLTS DC WORKING		
MTL-4-1	.1	1 1/8 x 1 x 1 1/2
MTL-4-25	.25	1 1/8 x 1 x 1 1/2
MTL-4-5	.5	1 1/8 x 1 x 1 1/16
600 VOLTS DC WORKING		
MTL-6-1	.1	1 1/8 x 1 x 1 1/2
MTL-6-25	.25	1 1/8 x 1 x 1 1/2
MTL-6-5	.5	1 1/8 x 1 x 1 1/16

STANDARD CAPACITANCE TOLERANCE: ±20%. Other tolerances are available.

*TRADE MARK

METALITE® HY-MET* TYPE MEL

Compact Seamless Cases
125°C. Operation



Cat. No.	Cap. Mf.	L. x W. x H.*
SINGLE UNITS — 2 terminals		
150 VOLTS DC WORKING		
MELT-1.5-3M	3.0	1.788x.619x1 1/2
MELT-1.5-4M	4.0	1.788x.619x2
MELT-1.5-6M	6.0	1.788x.619x2 1/2
200 VOLTS DC WORKING		
MELT-2-2M	2.0	1.788x.619x1
400 VOLTS DC WORKING		
MELT-4-5	.5	1.788x.619x1
MELT-4-1M	1.0	1.788x.619x1 1/2
MELT-4-2M	2.0	1.788x.619x2 1/2
MELT-4-3M	3.0	1.788x.619x2 3/4

Cat. No.	Cap. Mf.	L. x W. x H.*
600 VOLTS DC WORKING		
MELT-6-5	.5	1.788x.619x1
MELT-6-1M	1.0	1.788x.619x1 3/4
MELT-6-2M	2.0	1.788x.619x2 3/4

Cat. No.	Cap. Mf.	L. x W. x H.*
DUAL UNITS — 3 terminals		
200 VOLTS DC WORKING		
MELT-2-2x1M	1.0-1.0	1.788x.619x1
MELT-2-2x2M	2.0-2.0	1.788x.619x2
400 VOLTS DC WORKING		
MELT-4-2x1M	1.0-1.0	1.788x.619x2 1/2
600 VOLTS DC WORKING		
MELT-6-2x1M	1.0-1.0	1.788x.619x2 3/4

CAPACITANCE TOLERANCE: ±20%. *Add 1/32" to height for bracket.

*TRADE MARK

METALITE® HY-MET* TYPE MQLF

Glass-to-Metal Sealed
SUBMINIATURE TUBULARS

125°C. Operation



- Smallest paper capacitors available for the given ratings.
- Solid thermosetting impregnant. Temperature Range: -65°C. to +125°C.
- Tinned, non-ferrous metal cases. Hermetically sealed.
- Non-inductively wound. Capacitor section grounded to case, glass-to-metal seal terminal at one end. Available also with section insulated from case with glass-to-metal terminal at each end (Type MQLF).

VARIATIONS AVAILABLE

CAPACITOR SECTION INSULATED FROM CASE
Glass-to-Metal Terminal at both ends Circuit 1

TYPE AND DESCRIPTION	
UNINSULATED BODY	MQLF — Basic internally insulated unit as listed. MQLF-A — with tangential (A) soldered-on bracket. Example: MQLF-2-1-A. MQLF-B — with L-type (B) soldered-on bracket. Example: MQLF-2-1-B. MQLFS — screw neck vertical-mounting type. Same ratings as MQL. Minimum diameter .400". Example: MQLFS-2-1.
INSULATED BODY Add 1/16" to dia. and length of MQLF sizes listed	MQLFP — Basic internally insulated unit with plastic outer sleeve (P). Example: MQLFP-2-1.

CAPACITOR SECTION GROUNDED TO CASE
Glass-to-Metal Terminal at one end Circuit 3

TYPE AND DESCRIPTION	
UNINSULATED BODY Sizes shown in listings Deduct 1/16" from length of MQLF sizes listed	MQL — Basic type. MQL-A — with tangential (A) soldered-on bracket. Example: MQL-2-1-A. MQL-B — with L-type (B) soldered-on bracket. Example: MQL-2-1-B. MQLS — screw neck vertical-mounting type. Same ratings as type MQL. Minimum diameter .400". Example: MQLS-2-1. MQLV — Stud base vertical-mounting type. Same ratings and size as type MQL. Example: MQLV-2-1.
INSULATED BODY Add 1/16" to dia. of MQLF sizes listed	MQLP — Basic grounded construction as listed, with plastic outer sleeve (P). Example: MQLP-2-1.

Cat. No.	Cap. Mf.	Dia. x Length
150 VOLTS DC WORKING		
MQLF-1.5-4M	4.0	1x1-13/16
MQLF-1.5-6M	6.0	1x1-13/16
MQLF-1.5-8M	8.0	1x2-5/16

Cat. No.	Cap. Mf.	Dia. x Length
200 VOLTS DC WORKING		
MQLF-2-01	.01	.235x13/16
MQLF-2-022	.022	.235x13/16
MQLF-2-033	.033	.235x13/16
MQLF-2-047	.047	.235x13/16
MQLF-2-05	.05	.235x13/16
MQLF-2-068	.068	.312x13/16
MQLF-2-1	.1	.312x13/16
MQLF-2-15	.15	.312x13/16
MQLF-2-22	.22	.312x13/16
MQLF-2-25	.25	.312x13/16
MQLF-2-33	.33	.400x1 1/8
MQLF-2-47	.47	.400x1 1/8
MQLF-2-5	.5	.400x1 1/8
MQLF-2-68	.68	.500x1 1/8
MQLF-2-1M	1.0	.562x1 1/8
MQLF-2-2M	2.0	.562x1-13/16

Cat. No.	Cap. Mf.	Dia. x Length
400 VOLTS DC WORKING		
MQLF-4-01	.01	.235x13/16
MQLF-4-022	.022	.235x13/16
MQLF-4-033	.033	.312x13/16
MQLF-4-047	.047	.312x13/16
MQLF-4-05	.05	.312x13/16
MQLF-4-068	.068	.400x1 1/8
MQLF-4-1	.1	.400x1 1/8
MQLF-4-22	.22	.500x1 1/8
MQLF-4-25	.25	.500x1 1/8
MQLF-4-33	.33	.562x1-5/16
MQLF-4-47	.47	.562x1-13/16
MQLF-4-5	.5	.562x1-13/16
MQLF-4-68	.68	.670x1-13/16
MQLF-4-1M	1.0	.670x2-5/16
MQLF-4-2M	2.0	1 x2-5/16

Cat. No.	Cap. Mf.	Dia. x Length
600 VOLTS DC WORKING		
MQLF-6-01	.01	.235x13/16
MQLF-6-022	.022	.312x13/16
MQLF-6-033	.033	.400x13/16
MQLF-6-047	.047	.400x13/16
MQLF-6-05	.05	.400x13/16
MQLF-6-068	.068	.400x1 1/8
MQLF-6-1	.1	.400x1 1/8
MQLF-6-15	.15	.500x1 1/8
MQLF-6-22	.22	.562x1-5/16
MQLF-6-25	.25	.562x1-5/16
MQLF-6-33	.33	.562x1-13/16
MQLF-6-47	.47	.670x1-13/16
MQLF-6-5	.5	.670x1-13/16
MQLF-6-68	.68	.670x2-5/16
MQLF-6-1M	1.0	.750x2-5/16
MQLF-6-2M	2.0	1 x2-5/16

STANDARD CAPACITANCE TOLERANCE: ±20%. Other tolerances are available.



capacitors

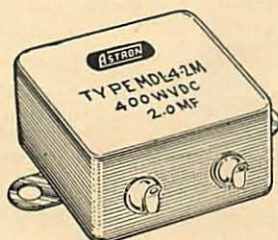
ASTRON CORPORATION

EAST NEWARK, N. J.

METALITE® HY-MET* TYPE MDL

Bathtub Capacitors

125°C. Operation



- Higher capacitance ratings than ever before offered in same size MIL Style CP53-55 cases in conventional paper-foil types.
- Solid thermosetting plastic impregnant enables operation to 125°C. Temperature Range: -65°C. to +125°C.
- Hermetically sealed. Lug type glass-to-metal sealed terminals.
- Standard position of terminals is on side. Can be supplied with top terminals (Type MDLT) or bottom terminals (Type MDLB).
- Standard capacitance tolerance: ±20%.

*TRADE MARK

Cat. No.	Cap. Mf.	L. x W. x H.
150 VOLTS DC WORKING		
MDL-1.5-3M	3.0	1 3/4 x 1 x 7/8
MDL-1.5-4M	4.0	1 3/4 x 1 x 7/8
MDL-1.5-5M	5.0	1 3/4 x 1 x 7/8
MDL-1.5-6M	6.0	1 3/4 x 1 1/4 x 7/8
MDL-1.5-8M	8.0	2 x 1 3/4 x 3/4
MDL-1.5-10M	10.0	2 x 1 3/4 x 3/4
MDL-1.5-12M	12.0	2 x 2 x 7/8
MDL-1.5-15M	15.0	2 x 2 x 1
MDL-1.5-18M	18.0	2 x 2 x 1 1/4
MDL-1.5-20M	20.0	2 x 2 x 1 1/2

Cat. No.	Cap. Mf.	L. x W. x H.
200 VOLTS DC WORKING		
MDL-2-1	.1	1 3/4 x 1 x 3/4
MDL-2-25	.25	1 3/4 x 1 x 3/4
MDL-2-5	.5	1 3/4 x 1 x 3/4
MDL-2-1M	1.0	1 3/4 x 1 x 3/4
MDL-2-2M	2.0	1 3/4 x 1 x 3/4

Cat. No.	Cap. Mf.	L. x W. x H.
400 VOLTS DC WORKING		
MDL-4-1	.1	1 3/4 x 1 x 3/4
MDL-4-25	.25	1 3/4 x 1 x 3/4
MDL-4-5	.5	1 3/4 x 1 x 3/4
MDL-4-1M	1.0	1 3/4 x 1 x 7/8
MDL-4-2M	2.0	2 x 1 3/4 x 1 1/8
MDL-4-3M	3.0	2 x 1 3/4 x 1 1/8
MDL-4-4M	4.0	2 x 2 x 1
MDL-4-5M	5.0	2 x 2 x 1 1/4
MDL-4-6M	6.0	2 x 2 x 1 1/2

Cat. No.	Cap. Mf.	L. x W. x H.
600 VOLTS DC WORKING		
MDL-6-1	.1	1 3/4 x 1 x 3/4
MDL-6-25	.25	1 3/4 x 1 x 3/4
MDL-6-5	.5	1 3/4 x 1 x 3/4
MDL-6-1M	1.0	1 3/4 x 1 1/4 x 7/8
MDL-6-2M	2.0	2 x 2 x 7/8
MDL-6-3M	3.0	2 x 2 x 1 1/8
MDL-6-4M	4.0	2 x 2 x 1 3/8

STANDARD CAPACITANCE TOLERANCE: ±20%. OTHER TOLERANCES ARE AVAILABLE

METALITE® HY-MET* TYPE MXLJ

In Terneplate Cases

125°C. Operation



- Higher capacitance than ever before achieved in MIL Style CP70 cases, due to use of metallized paper sections.
- Temperature range -65°C. to +125°C. due to use of solid thermosetting impregnant.
- Hermetically sealed. Glass-to-metal sealed lug terminals.
- Exceptionally small sizes for the given ratings. Size reductions of 50% to 75% over equal ratings in conventional paper-foil units.
- Spade bolt "J" brackets supplied with each unit for convenient, rigid mounting.
- Standard capacitance tolerance: ±20%.

*TRADE MARK

Cat. No.	Cap. Mf.	L. x W. x H.
150 VOLTS DC WORKING		
MXLJ-1.5-4M	4.0	1 3/4 x 1 x 1 5/8
MXLJ-1.5-10M	10.0	1 3/4 x 1 x 2 5/8
MXLJ-1.5-12M	12.0	1 3/4 x 1 x 2 7/8
MXLJ-1.5-15M	15.0	1 3/4 x 1 x 3 3/8
MXLJ-1.5-20M	20.0	1 3/4 x 1 x 4 3/8
MXLJ-1.5-25M	25.0	2 1/2 x 1 7/8 x 3
MXLJ-1.5-30M	30.0	2 1/2 x 1 7/8 x 3 7/8
MXLJ-1.5-50M	50.0	2 1/2 x 1 7/8 x 4 3/4

Cat. No.	Cap. Mf.	L. x W. x H.
400 VOLTS DC WORKING		
MXLJ-4-2M	2.0	1 3/4 x 1 x 2 1/8
MXLJ-4-4M	4.0	1 3/4 x 1 x 2 7/8
MXLJ-4-6M	6.0	1 3/4 x 1 x 3 3/8
MXLJ-4-8M	8.0	1 3/4 x 1 x 4 3/8
MXLJ-4-10M	10.0	2 1/2 x 1 7/8 x 3 7/8
MXLJ-4-20M	20.0	2 1/2 x 1 7/8 x 4 3/4
MXLJ-4-30M	30.0	3 3/4 x 1 1/4 x 4 3/4

Cat. No.	Cap. Mf.	L. x W. x H.
600 VOLTS DC WORKING		
MXLJ-6-1M	1.0	1 3/4 x 1 x 1 5/8
MXLJ-6-2M	2.0	1 3/4 x 1 x 2 3/8
MXLJ-6-4M	4.0	1 3/4 x 1 x 3 3/8
MXLJ-6-6M	6.0	1 3/4 x 1 x 4 3/8
MXLJ-6-8M	8.0	2 1/2 x 1 7/8 x 3 7/8
MXLJ-6-10M	10.0	2 1/2 x 1 7/8 x 4 3/4
MXLJ-6-15M	15.0	3 3/4 x 1 1/4 x 4 3/4
MXLJ-6-20M	20.0	3 3/4 x 1 3/4 x 4 3/4

STANDARD CAPACITANCE TOLERANCE: ±20%. Other tolerances are available.



capacitors

ASTRON CORPORATION

EAST NEWARK, N. J.

FLAT MINIATURE MYLAR* DIELECTRIC CAPACITORS



Cat. No.	Cap. Mds.	L	T	W	Cat. No.	Cap. Mds.	L	T	W
XPF-1.5-01	.01	3/4"	5/32"	7/32"	XPF-1.5-1	.1	7/8"	3/32"	7/16"
XPF-1.5-015	.015	3/4"	3/16"	7/16"	XPF-1.5-15	.15	1"	5/16"	7/16"
XPF-1.5-022	.022	3/4"	1/4"	3/8"	XPF-1.5-22	.22	1 1/4"	3/32"	15/32"
XPF-1.5-033	.033	3/4"	7/32"	11/32"	XPF-1.5-33	.33	1 3/4"	3/8"	17/32"
XPF-1.5-047	.047	3/4"	1/4"	3/8"	XPF-1.5-47	.47	1 3/8"	13/32"	9/16"
XPF-1.5-068	.068	7/8"	7/32"	3/8"	XPF-1.5-68	.68	1 5/8"	7/16"	19/32"
XPF-1.5-082	.082	7/8"	1/4"	13/32"	XPF-1.5-82	.82	1 5/8"	15/32"	5/8"
					XPF-1.5-1M	1.0M	1 7/8"	15/32"	5/8"

Standard Tolerance $\pm 20\%$.

* Reg. Dupont Trade Mark

ROUND MINIATURE MYLAR* DIELECTRIC CAPACITORS

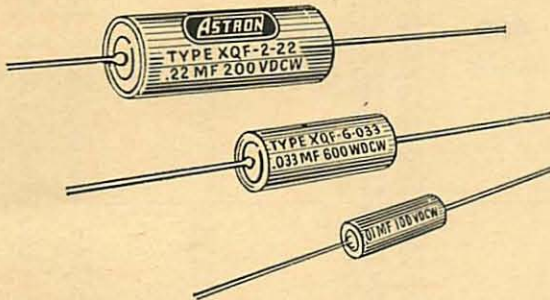


Cat. No.	Cap. Mds.	L	Dia.	Cat. No.	Cap. Mds.	L	Dia.
XPR-1.5-01	.01	3/4"	.230	XPR-1.5-1	.1	7/8"	.380
XPR-1.5-015	.015	3/4"	.270	XPR-1.5-15	.15	1"	.390
XPR-1.5-022	.022	3/4"	.310	XPR-1.5-22	.22	1 1/4"	.390
XPR-1.5-033	.033	3/4"	.280	XPR-1.5-33	.33	1 1/4"	.460
XPR-1.5-047	.047	3/4"	.330	XPR-1.5-47	.47	1 3/8"	.500
XPR-1.5-068	.068	7/8"	.320	XPR-1.5-68	.68	1 5/8"	.530
XPR-1.5-082	.082	7/8"	.350	XPR-1.5-82	.82	1 5/8"	.580
				XPR-1.5-1M	1.0	1 7/8"	.580

Standard Tolerance $\pm 20\%$.

*Reg. Dupont Trade Mark

SERIES "X" MYLAR-PLUS CAPACITORS



SERIES "X" MYLAR-PLUS CAPACITORS

Astron's new series "X" Mylar capacitors are engineered for reliable operation up to 150° without derating. These miniaturized, metal tubulars provide exceptional capacitance stability, excellent insulation resistance, power factor and long life. The XQF series are designed to meet MIL-C-25A specifications.

WVDC	Catalog Number	Cap. Mf.	Dia. x Length
50	XQF-5-0047	.0047	.235 x 1 1/16"
	XQF-5-01	.01	.235 x 1 1/16"
	XQF-5-022	.022	.235 x 1 1/16"
	XQF-5-033	.033	.235 x 1 1/16"
	XQF-5-047	.047	.312 x 1 1/16"
	XQF-5-1	.1	.400 x 1 1/16"
	XQF-5-22	.22	.400 x 1 1/16"
	XQF-5-27	.27	.400 x 1 1/16"
	XQF-5-47	.47	.562 x 1 1/16"
	XQF-5-1M	1.0	.562 x 1 1/16"
100	XQF-1-0047	.0047	.235 x 1 1/16"
	XQF-1-01	.01	.235 x 1 1/16"
	XQF-1-022	.022	.312 x 1 1/16"
	XQF-1-033	.033	.312 x 1 1/16"
	XQF-1-047	.047	.312 x 1 1/16"
	XQF-1-1	.1	.400 x 1 1/16"
	XQF-1-22	.22	.562 x 1 1/16"
	XQF-1-27	.27	.562 x 1 1/16"
	XQF-1-47	.47	.562 x 1 1/16"
	XQF-1-1M	1.0	.750 x 1 1/16"
200	XQF-2-0047	.0047	.235 x 1 1/16"
	XQF-2-01	.01	.235 x 1 1/16"
	XQF-2-022	.022	.312 x 1 1/16"
	XQF-2-033	.033	.400 x 1 1/16"
	XQF-2-047	.047	.400 x 1 1/16"
	XQF-2-1	.1	.400 x 1 1/16"
	XQF-2-22	.22	.562 x 1 1/16"
	XQF-2-27	.27	.670 x 1 1/16"
	XQF-2-47	.47	.750 x 1 1/16"
	XQF-2-1M	1.0	1 x 2 3/16"
400	XQF-4-0047	.0047	.235 x 1 1/16"
	XQF-4-01	.01	.312 x 1 1/16"
	XQF-4-022	.022	.312 x 1 1/16"
	XQF-4-033	.033	.400 x 1 1/16"
	XQF-4-047	.047	.400 x 1 1/16"
	XQF-4-1	.1	.562 x 1 1/16"
	XQF-4-22	.22	.670 x 1 1/16"
	XQF-4-27	.27	.750 x 1 1/16"
	XQF-4-47	.47	.750 x 2 3/16"
600	XQF-6-0047	.0047	.235 x 1 1/16"
	XQF-6-01	.01	.312 x 1 1/16"
	XQF-6-022	.022	.400 x 1 1/16"
	XQF-6-033	.033	.400 x 1 1/16"
	XQF-6-047	.047	.400 x 1 1/16"
	XQF-6-1	.1	.562 x 1 1/16"
	XQF-6-22	.22	.750 x 1 1/16"
	XQF-6-27	.27	.750 x 2 3/16"
	XQF-6-47	.47	1 x 2 3/16"

STANDARD CAPACITANCE TOLERANCE: $\pm 20\%$. Closer tolerances can be supplied.



capacitors

ASTRON CORPORATION

EAST NEWARK, N. J.

METALLIZED MYLAR* CAPACITORS



ASTRON TYPE RLR metallized Mylar* capacitors provide reliable operation even under adverse conditions in spite of their smaller size and lower cost. Type RLR is an uncased unit, with a tough, protective Mylar* wrap and epoxy end seal . . . ideal for potted assembly, military and commercial applications.

WVDC	Catalog Number	Mfd. Cap.	Dia. x Lgth.
200	RLR 2-01	.01	.155" x 5/8"
	RLR 2-012	.012	.165" x 5/8"
	RLR 2-015	.015	.180" x 5/8"
	RLR 2-018	.018	.190" x 5/8"
	RLR 2-022	.022	.205" x 5/8"
	RLR 2-027	.027	.220" x 5/8"
	RLR 2-047	.047	.200" x 3/4"
	RLR 2-068	.068	.220" x 3/4"
	RLR 2-1	.1	.255" x 3/4"
	RLR 2-15	.15	.227" x 1 1/8"
	RLR 2-22	.22	.262" x 1 1/8"
	RLR 2-33	.33	.305" x 1 1/8"
	RLR 2-47	.47	.355" x 1 1/8"
	RLR 2-56	.56	.380" x 1 1/8"
	RLR 2-68	.68	.415" x 1 1/8"
	RLR 2-1M	1.0	.490" x 1 1/8"
	RLR 2-1.5M	1.5	.470" x 1 5/8"
	RLR 2-2M	2.0	.535" x 1 5/8"
	RLR 2-3M	3.0	.595" x 1 7/8"
	RLR 2-6M	6.0	.825" x 1 7/8"

Cap. Tolerance $\pm 20\%$.

* Reg. Dupont Trade Mark

MYLAR* METALLIZED CAPACITORS



ASTRON TYPE RQL combines in a miniature hermetically sealed case the outstanding attributes of reliability at high temperatures — 125°C without derating — with significant savings of space. They will find their main applications in military reliability equipment and in critical industrial circuits. Type RQL Mylar* metallized capacitors are available in various military case and mounting styles.

WVDC	Catalog Number	Cap. Mfd.	Dia. x Lgth. in inches
200	RQL 2-01	.010	.235 x 1 1/16
	RQL 2-012	.012	.235 x 1 1/16
	RQL 2-015	.015	.235 x 1 1/16
	RQL 2-018	.018	.235 x 1 1/16
	RQL 2-022	.022	.235 x 1 1/16
	RQL 2-027	.027	.235 x 1 1/16
	RQL 2-033	.033	.235 x 1 1/16
	RQL 2-039	.039	.312 x 1 1/16
	RQL 2-047	.047	.312 x 1 1/16
	RQL 2-056	.056	.312 x 1 1/16
	RQL 2-068	.068	.312 x 1 1/16
	RQL 2-082	.082	.312 x 1 1/16
	RQL 2-1	.1	.312 x 1 1/16
	RQL 2-12	.12	.312 x 1 1/16
	RQL 2-15	.15	.312 x 1 1/16
	RQL 2-18	.18	.400 x 1 1/16
	RQL 2-22	.22	.400 x 1 1/16
	RQL 2-27	.27	.400 x 1 1/16
	RQL 2-33	.33	.400 x 1 1/16
	RQL 2-39	.39	.500 x 1 1/16
	RQL 2-47	.47	.500 x 1 1/16
	RQL 2-56	.56	.500 x 1 1/16
	RQL 2-68	.68	.500 x 1 1/16
	RQL 2-82	.82	.562 x 1 1/16
	RQL 2-1. M	1.0	.562 x 1 1/16
	RQL 2-1.5 M	1.5	.562 x 1 1/16
	RQL 2-2. M	2.0	.670 x 1 1/16
	RQL 2-3. M	3.0	.670 x 1 1/16
	RQL 2-4. M	4.0	.750 x 1 1/16
	RQL 2-5. M	5.0	1.00 x 1 1/16
RQL 2-6. M	6.0	1.00 x 1 1/16	
RQL 2-8. M	8.0	1.00 x 1 1/16	
RQL 2-10. M	10.0	1.00 x 2 1/16	
RQL 2-12. M	12.0	1.00 x 2 1/16	
400	RQL 4-01	.010	.312 x 1 1/16
	RQL 4-012	.012	.312 x 1 1/16
	RQL 4-015	.015	.312 x 1 1/16
	RQL 4-018	.018	.312 x 1 1/16
	RQL 4-022	.022	.312 x 1 1/16
	RQL 4-027	.027	.312 x 1 1/16
	RQL 4-033	.033	.312 x 1 1/16
	RQL 4-039	.039	.400 x 1 1/16
	RQL 4-047	.047	.400 x 1 1/16
	RQL 4-056	.056	.400 x 1 1/16
RQL 4-068	.068	.400 x 1 1/16	

WVDC	Catalog Number	Cap. Mfd.	Dia. x Lgth. in inches
400 (cont'd)	RQL 4-082	.082	.500 x 1 1/16
	RQL 4-1	.1	.500 x 1 1/16
	RQL 4-12	.12	.500 x 1 1/16
	RQL 4-15	.15	.500 x 1 1/16
	RQL 4-18	.18	.562 x 1 1/16
	RQL 4-22	.22	.562 x 1 1/16
	RQL 4-27	.27	.562 x 1 1/16
	RQL 4-33	.33	.562 x 1 1/16
	RQL 4-39	.39	.670 x 1 1/16
	RQL 4-47	.47	.670 x 1 1/16
	RQL 4-56	.56	.670 x 1 1/16
	RQL 4-68	.68	.670 x 1 1/16
	RQL 4-82	.82	.750 x 1 1/16
	RQL 4-1. M	1.0	.750 x 1 1/16
	RQL 4-1.5 M	1.5	1.00 x 1 1/16
RQL 4-2. M	2.0	1.00 x 1 1/16	
RQL 4-3. M	3.0	1.00 x 2 1/16	
600	RQL 6-01	.010	.312 x 1 1/16
	RQL 6-012	.012	.312 x 1 1/16
	RQL 6-015	.015	.312 x 1 1/16
	RQL 6-018	.018	.312 x 1 1/16
	RQL 6-022	.022	.312 x 1 1/16
	RQL 6-027	.027	.312 x 1 1/16
	RQL 6-033	.033	.312 x 1 1/16
	RQL 6-039	.039	.400 x 1 1/16
	RQL 6-047	.047	.400 x 1 1/16
	RQL 6-056	.056	.400 x 1 1/16
	RQL 6-068	.068	.400 x 1 1/16
	RQL 6-082	.082	.500 x 1 1/16
	RQL 6-1	.1	.500 x 1 1/16
	RQL 6-12	.12	.562 x 1 1/16
	RQL 6-15	.15	.562 x 1 1/16
	RQL 6-18	.18	.562 x 1 1/16
	RQL 6-22	.22	.562 x 1 1/16
	RQL 6-27	.27	.562 x 1 1/16
	RQL 6-33	.33	.562 x 1 1/16
	RQL 6-39	.39	.670 x 1 1/16
RQL 6-47	.47	.670 x 1 1/16	
RQL 6-56	.56	.670 x 1 1/16	
RQL 6-68	.68	.670 x 1 1/16	
RQL 6-82	.82	1.00 x 1 1/16	
RQL 6-1. M	1.0	1.00 x 1 1/16	
RQL 6-1.5 M	1.5	1.00 x 2 1/16	
RQL 6-2. M	2.0	1.00 x 2 1/16	
RQL 6-2.5 M	2.5	1.00 x 2 1/16	

* Reg. Dupont Trade Mark



capacitors

ASTRON CORPORATION

EAST NEWARK, N. J.

TYPE TQF

MILITARY

TYPE

**CP04 CP10
CP05 CP11
MIL-C-25A**



**Commercial
Equivalent**

TEMPERATURE CHARACTERISTICS E AND K

CIRCUIT 1

(Capacitor Section Insulated From Case)

100 VOLTS	Commercial Equivalent	Cap. Mfd.	Dia. x Length
AS-CP04A1-B333M	TQF-1-033	.033	.235 x 3/4
AS-CP04A1-B104M	TQF-1-1	.1	.312 x 7/8
AS-CP04A1-B154M	TQF-1-15	.15	.400 x 7/8
AS-CP04A1-B224M	TQF-1-22	.22	.400 x 1 1/8
AS-CP04A1-B334M	TQF-1-33	.33	.400 x 1 1/8
AS-CP04A1-B474M	TQF-1-47	.47	.562 x 1 1/8
AS-CP04A1-B684M	TQF-1-68	.68	.562 x 1 1/8
AS-CP04A1-B105M	TQF-1-1M	1.0	.562 x 1 1/8

200 VOLTS	Commercial Equivalent	Cap. Mfd.	Dia. x Length
AS-CP04A1-C153M	TQF-2-015	.015	.235 x 3/4
AS-CP04A1-C223M	TQF-2-022	.022	.235 x 3/4
AS-CP04A1-C473M	TQF-2-047	.047	.312 x 7/8
AS-CP04A1-C683M	TQF-2-068	.068	.312 x 7/8
AS-CP04A1-C104M	TQF-2-1	.1	.400 x 7/8
AS-CP04A1-C154M	TQF-2-15	.15	.400 x 1 1/8
AS-CP04A1-C224M	TQF-2-22	.22	.400 x 1 1/8
AS-CP04A1-C334M	TQF-2-33	.33	.562 x 1 1/8
AS-CP04A1-C474M	TQF-2-47	.47	.562 x 1 1/8
AS-CP04A1-C684M	TQF-2-68	.68	.562 x 1 1/8
AS-CP04A1-C105M	TQF-2-1M	1.0	.670 x 1 1/8

400 VOLTS	Commercial Equivalent	Cap. Mfd.	Dia. x Length
AS-CP04A1-E103M	TQF-4-01	.01	.235 x 3/4
AS-CP04A1-E333M	TQF-4-033	.033	.312 x 7/8
AS-CP04A1-E473M	TQF-4-047	.047	.400 x 7/8
AS-CP04A1-E683M	TQF-4-068	.068	.400 x 1 1/8
AS-CP04A1-E104M	TQF-4-1	.1	.400 x 1 1/8
AS-CP04A1-E154M	TQF-4-15	.15	.562 x 1 1/8
AS-CP04A1-E224M	TQF-4-22	.22	.562 x 1 1/8
AS-CP04A1-E334M	TQF-4-33	.33	.562 x 1 1/8
AS-CP04A1-E474M	TQF-4-47	.47	.670 x 1 1/8
AS-CP04A1-E684M	TQF-4-68	.68	.750 x 2 1/8
AS-CP04A1-E105M	TQF-4-1M	1.0M	1.000 x 1 1/8

600 VOLTS	Commercial Equivalent	Cap. Mfd.	Dia. x Length
AS-CP04A1-F102M	TQF-6-001	.001	.235 x 3/4
AS-CP04A1-F152M	TQF-6-0015	.0015	.235 x 3/4
AS-CP04A1-F222M	TQF-6-0022	.0022	.235 x 3/4
AS-CP04A1-F332M	TQF-6-0033	.0033	.235 x 3/4
AS-CP04A1-F472M	TQF-6-0047	.0047	.235 x 3/4
AS-CP04A1-F682M	TQF-6-0068	.0068	.235 x 3/4
AS-CP04A1-F103M	TQF-6-01	.01	.312 x 7/8
AS-CP04A1-F153M	TQF-6-015	.015	.312 x 7/8
AS-CP04A1-F223M	TQF-6-022	.022	.312 x 7/8
AS-CP04A1-F333M	TQF-6-033	.033	.400 x 7/8
AS-CP04A1-F473M	TQF-6-047	.047	.400 x 1 1/8
AS-CP04A1-F683M	TQF-6-068	.068	.400 x 1 1/8
AS-CP04A1-F104M	TQF-6-1	.1	.562 x 1 1/8
AS-CP04A1-F154M	TQF-6-15	.15	.562 x 1 1/8
AS-CP04A1-F224M	TQF-6-22	.22	.562 x 1 1/8
AS-CP04A1-F334M	TQF-6-33	.33	.670 x 1 1/8
AS-CP04A1-F474M	TQF-6-47	.47	.750 x 2 1/8
AS-CP04A1-F684M	TQF-6-68	.68	1.000 x 1 1/8

1000 VOLTS	Commercial Equivalent	Cap. Mfd.	Dia. x Length
AS-CP04A1-G153M	TQF-10-015	.015	.400 x 7/8
AS-CP04A1-G223M	TQF-10-022	.022	.400 x 1 1/8
AS-CP04A1-G333M	TQF-10-033	.033	.400 x 1 1/8
AS-CP04A1-G473M	TQF-10-047	.047	.562 x 1 1/8
AS-CP04A1-G683M	TQF-10-068	.068	.562 x 1 1/8
AS-CP04A1-G104M	TQF-10-1	.1	.562 x 1 1/8
AS-CP04A1-G154M	TQF-10-15	.15	.670 x 1 1/8
AS-CP04A1-G224M	TQF-10-22	.22	.750 x 2 1/8
AS-CP04A1-G334M	TQF-10-33	.33	.750 x 2 1/8
AS-CP04A1-G474M	TQF-10-47	.47	1.000 x 2 1/8

VARIATIONS

CIRCUIT 1	CAPACITOR SECTION INSULATED FROM THE CASE	MIL STYLE	ASTRON TYPE
UNINSULATED BODY SIZES SHOWN IN LISTINGS	Basic unit in floating construction. Sizes as shown in listings.	CP04 (1)	TQF
	Basic unit with tangential soldered-on bracket. Add suffix (A).	CP10 (1)	TQF-A
	Basic unit with soldered-on L type bracket. Add suffix (B).	—	TQF-B
	Screw neck mounting type. Available in same ratings as TQF.	CP11 (1)	TQFS
	Minimum in case diameter .400".		
FOR INSULATED BODY ADD 1/16" TO DIAMETER AND LENGTH OF TQF SIZES LISTED	Internally insulated ("floating" Construction) with plastic outer sleeve (P).	CP05 (1)	TQFP

CIRCUIT 3	CAPACITOR SECTION GROUNDED TO CASE	MIL STYLE	ASTRON TYPE
UNINSULATED BODY DEDUCT 1/16" FROM LENGTH OF UNITS LISTED	Basic unit — Grounded construction.	CP04 (3)	TQ
	Basic TQ unit with soldered-on tangential (A) bracket.	CP10 (3)	TQ-A
	Basic TQ unit with soldered-on L type bracket (B).	—	TQ-B
	Screw neck mounting type. Available in same ratings as TQ. Minimum case diameter is .400".	CP11 (3)	TQS
	Stud base mounting type. Available in same ratings as TQ.	—	TQV
FOR INSULATED BODY ADD 1/16" TO DIAMETER OF TQF SIZES LISTED	Grounded construction, with plastic outer sleeve (P).	CP05 (3)	TQP

See complete commercial listings page 391.



capacitors

ASTRON CORPORATION

EAST NEWARK, N. J.

TYPE AQF
MILITARY
TYPE

CP08
CP09
MIL-C-25A



Commercial
Equivalent

TEMPERATURE CHARACTERISTICS E AND K
CIRCUIT 1

(Capacitor Section Insulated From Case)

100 VOLTS	Commercial Equivalent	Cap. Mfd.	Dia. x Length
AS-CP08A1-B103M	AQF-1-01	.01	.235 x 3/4
AS-CP08A1-B153M	AQF-1-015	.015	.235 x 3/4
AS-CP08A1-B473M	AQF-1-047	.047	.312 x 7/8
AS-CP08A1-B104M	AQF-1-1	.1	.400 x 7/8
AS-CP08A1-B154M	AQF-1-15	.15	.400 x 1 1/8
AS-CP08A1-B224M	AQF-1-22	.22	.400 x 1 1/8
AS-CP08A1-B334M	AQF-1-33	.33	.562 x 1 1/8
AS-CP08A1-B474M	AQF-1-47	.47	.562 x 1 1/8
AS-CP08A1-B684M	AQF-1-68	.68	.562 x 1 1/8
AS-CP08A1-B105M	AQF-1-1M	1.0	.670 x 1 1/8

200 VOLTS	Commercial Equivalent	Cap. Mfd.	Dia. x Length
AS-CP08A1-C472M	AQF-2-0047	.0047	.235 x 3/4
AS-CP08A1-C682M	AQF-2-0068	.0068	.235 x 3/4
AS-CP08A1-C223M	AQF-2-022	.022	.312 x 7/8
AS-CP08A1-C333M	AQF-2-033	.033	.312 x 7/8
AS-CP08A1-C473M	AQF-2-047	.047	.400 x 7/8
AS-CP08A1-C683M	AQF-2-068	.068	.400 x 7/8
AS-CP08A1-C104M	AQF-2-1	.1	.400 x 1 1/8
AS-CP08A1-C154M	AQF-2-15	.15	.400 x 1 1/8
AS-CP08A1-C224M	AQF-2-22	.22	.562 x 1 1/8
AS-CP08A1-C334M	AQF-2-33	.33	.562 x 1 1/8
AS-CP08A1-C474M	AQF-2-47	.47	.562 x 1 1/8
AS-CP08A1-C684M	AQF-2-68	.68	.670 x 1 1/8
AS-CP08A1-C105M	AQF-2-1M	1.0	.750 x 2 1/8

400 VOLTS	Commercial Equivalent	Cap. Mfd.	Dia. x Length
AS-CP08A1-E332M	AQF-4-0033	.0033	.235 x 3/4
AS-CP08A1-E153M	AQF-4-015	.015	.312 x 7/8
AS-CP08A1-E333M	AQF-4-033	.033	.400 x 7/8
AS-CP08A1-E473M	AQF-4-047	.047	.400 x 1 1/8
AS-CP08A1-E683M	AQF-4-068	.068	.400 x 1 1/8
AS-CP08A1-E104M	AQF-4-1	.1	.562 x 1 1/8
AS-CP08A1-E154M	AQF-4-15	.15	.562 x 1 1/8
AS-CP08A1-E224M	AQF-4-22	.22	.562 x 1 1/8
AS-CP08A1-E334M	AQF-4-33	.33	.670 x 1 1/8
AS-CP08A1-E474M	AQF-4-47	.47	.750 x 2 1/8

600 VOLTS	Commercial Equivalent	Cap. Mfd.	Dia. x Length
AS-CP08A1-F102M	AQF-6-001	.001	.235 x 3/4
AS-CP08A1-F152M	AQF-6-0015	.0015	.235 x 3/4
AS-CP08A1-F222M	AQF-6-0022	.0022	.235 x 3/4
AS-CP08A1-F332M	AQF-6-0033	.0033	.312 x 7/8
AS-CP08A1-F472M	AQF-6-0047	.0047	.312 x 7/8
AS-CP08A1-F682M	AQF-6-0068	.0068	.312 x 7/8
AS-CP08A1-F103M	AQF-6-01	.01	.312 x 7/8
AS-CP08A1-F153M	AQF-6-015	.015	.400 x 7/8
AS-CP08A1-F223M	AQF-6-022	.022	.400 x 7/8
AS-CP08A1-F333M	AQF-6-033	.033	.400 x 1 1/8
AS-CP08A1-F473M	AQF-6-047	.047	.400 x 1 1/8
AS-CP08A1-F683M	AQF-6-068	.068	.562 x 1 1/8
AS-CP08A1-F104M	AQF-6-1	.1	.562 x 1 1/8
AS-CP08A1-F154M	AQF-6-15	.15	.562 x 1 1/8
AS-CP08A1-F224M	AQF-6-22	.22	.670 x 1 1/8
AS-CP08A1-F334M	AQF-6-33	.33	.750 x 2 1/8
AS-CP08A1-F474M	AQF-6-47	.47	.750 x 2 1/8

1000 VOLTS	Commercial Equivalent	Cap. Mfd.	Dia. x Length
AS-CP08A1-G102M	AQF-10-001	.001	.400 x 7/8
AS-CP08A1-G152M	AQF-10-0015	.0015	.400 x 7/8
AS-CP08A1-G222M	AQF-10-0022	.0022	.400 x 7/8
AS-CP08A1-G332M	AQF-10-0033	.0033	.400 x 7/8
AS-CP08A1-G472M	AQF-10-0047	.0047	.400 x 7/8
AS-CP08A1-G682M	AQF-10-0068	.0068	.400 x 7/8
AS-CP08A1-G103M	AQF-10-01	.01	.400 x 7/8
AS-CP08A1-G153M	AQF-10-015	.015	.400 x 1 1/8
AS-CP08A1-G223M	AQF-10-022	.022	.400 x 1 1/8
AS-CP08A1-G333M	AQF-10-033	.033	.562 x 1 1/8
AS-CP08A1-G473M	AQF-10-047	.047	.562 x 1 1/8
AS-CP08A1-G683M	AQF-10-068	.068	.562 x 1 1/8
AS-CP08A1-G104M	AQF-10-1	.1	.670 x 1 1/8
AS-CP08A1-G154M	AQF-10-15	.15	.670 x 1 1/8
AS-CP08A1-G224M	AQF-10-22	.22	.750 x 2 1/8
AS-CP08A1-G334M	AQF-10-33	.33	1.000 x 2 1/8
AS-CP08A1-G474M	AQF-10-47	.47	1.000 x 2 1/8

VARIATIONS

CIRCUIT 1	CAPACITOR SECTION INSULATED FROM THE CASE	MIL STYLE	ASTRON TYPE
UNINSULATED BODY SIZES SHOWN IN LISTINGS	Basic unit in floating construction. Sizes as shown in listings.	CP08 (1)	AQF
	Basic unit with tangential soldered-on bracket. Add suffix (A).	—	AQF-A
	Basic unit with soldered-on L type bracket. Add suffix (B).	—	AQF-B
	Screw neck mounting type. Available in same ratings as AQF.	—	AQFS
	Minimum in case diameter .400".		

FOR INSULATED BODY ADD 1/16" TO DIAMETER AND LENGTH OF AQF SIZES LISTED Internally insulated ("Floating" Construction) with plastic outer sleeve (P). CP09 (1) AQFP

CIRCUIT 3	CAPACITOR SECTION GROUNDED TO CASE	MIL STYLE	ASTRON TYPE
UNINSULATED BODY DEDUCT 1/16" FROM LENGTH OF UNITS LISTED	Basic unit — Grounded construction.	CP08 (3)	AQ
	Basic AQ unit with soldered-on tangential (A) bracket.	—	AQ-A
	Basic AQ unit with soldered-on L type bracket (B).	—	AQ-B
	Screw neck mounting type. Available in same ratings as AQ. Minimum case diameter is .400".	—	AQS
	Stud base mounting type. Available in same ratings as AQ.	—	AQV

FOR INSULATED BODY ADD 1/16" TO DIAMETER OF AQF SIZES LISTED Grounded construction, with plastic outer sleeve (P). CP09 (3) AQP

See complete commercial listings page 392.



capacitors

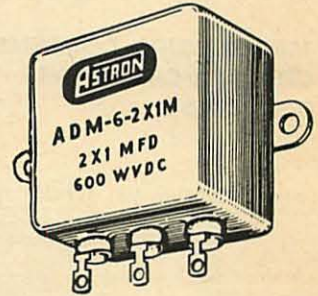
ASTRON CORPORATION

EAST NEWARK, N. J.

**CP25
thru
CP29
of
MIL C-25A**



**CP53
thru
CP55
of
MIL C-25A**



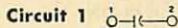
TYPE ARMF Oil Filled Metal Tubulars 85°C. Operation

- Non-inductively wound. Mineral oil impregnated and filled. Hermetically sealed.
- Excellent capacitance stability and low power factor over entire temperature range -55°C. to +85°C.
- Units listed are internally insulated from case. Also available with capacitor section grounded to case (Type ARMG) and in accordance with all Specification MIL-C-25A styles CP25-26-27-28-29.
- Wire leads 1½" long. Standard capacitance tolerance ±20%.

Military Number	Astron Type	Cap. Mf.	Dia. x Length
200 VOLTS DC WORKING			
AS-CP25A1EC104M	ARMF-2-1	.1	5/8 x 1 1/8
AS-CP25A1EC254M	ARMF-2-25	.25	3/4 x 2 1/8
AS-CP25A1EC504M	ARMF-2-5	.5	1 x 2 1/8
600 VOLTS DC WORKING			
AS-CP25A1EF302M	ARMF-6-003	.003	7/16 x 1 1/8
AS-CP25A1EF602M	ARMF-6-006	.006	7/16 x 1 1/8
AS-CP25A1EF103M	ARMF-6-01	.01	7/16 x 1 1/8
AS-CP25A1EF203M	ARMF-6-02	.02	7/16 x 1 1/8
AS-CP25A1EF503M	ARMF-6-05	.05	9/8 x 1 1/2
AS-CP25A1EF104M	ARMF-6-1	.1	9/8 x 1 7/8
AS-CP25A1EF254M	ARMF-6-25	.25	1 x 2 1/8
AS-CP25A1EF504M	ARMF-6-5	.5	1 x 2 3/8
1000 VOLTS DC WORKING			
AS-CP25A1EG302M	ARMF-10-003	.003	5/8 x 1 1/8
AS-CP25A1EG602M	ARMF-10-006	.006	5/8 x 1 1/8
AS-CP25A1EG103M	ARMF-10-01	.01	5/8 x 1 1/8
AS-CP25A1EG203M	ARMF-10-02	.02	5/8 x 1 1/2
AS-CP25A1EG503M	ARMF-10-05	.05	3/4 x 1 1/8
AS-CP25A1EG104M	ARMF-10-1	.1	1 x 1 7/8
AS-CP25A1EG254M	ARMF-10-25	.25	1 x 2 3/8
1500 VOLTS DC WORKING			
AS-CP25A1EH302M	ARMF-15-003	.003	1 x 1 1/4
AS-CP25A1EH602M	ARMF-15-006	.006	1 x 1 1/4
AS-CP25A1EH103M	ARMF-15-01	.01	1 x 1 1/4
AS-CP25A1EH203M	ARMF-15-02	.02	1 x 1 1/8
AS-CP25A1EH503M	ARMF-15-05	.05	1 x 1 7/8
AS-CP25A1EH104M	ARMF-15-1	.1	1 x 2 3/8

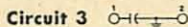
VARIATIONS AVAILABLE

CAPACITOR SECTION INSULATED FROM CASE



ASTRON TYPE AND DESCRIPTION	MIL STYLE
UNINSULATED BODY (sizes shown in listings)	ARMF - Basic type as listed. CP25
	ARMF-Y - with radial (Y) bracket. Example: ARMF-2-1Y. CP27
	ARMF-A - with tangential (A) soldered-on bracket. Example: ARMF-2-1A. CP29
INSULATED BODY add 3/16" to length and 1/16" to dia.	ARMFP - Basic with plastic sleeve (P). Example: ARMFP-2-1. CP26
	ARMFP-Y - with plastic sleeve (P) and radial (Y) bracket. Example: ARMFP-2-1Y. CP28

CAPACITOR SECTION GROUNDED TO CASE



ASTRON TYPE AND DESCRIPTION	MIL STYLE
UNINSULATED BODY deduct 1/8" from length in above listings	ARMG - Basic grounded section type. CP25
	ARMG-Y - with radial (Y) bracket. Example: ARMG-2-1Y. CP27
	ARMG-A - with tangential (A) soldered-on bracket. Example: ARMG-2-1A. CP25
INSULATED BODY add 1/16" to length and 1/16" to dia. in above listings	ARMGP - Basic grounded section type with plastic sleeve (P). CP26
	ARMGP-Y - with plastic sleeve (P) and radial (Y) bracket. Example: ARMGP-2-1Y. CP28

**TYPE ADM
Bathtub Paper Capacitors
85°C. Operation**

- Non-inductively wound. Mineral oil impregnated and filled. Hermetically sealed.
- Operating temperature range -55°C. to +85°C.
- Built to comply with strict requirements of MIL-C-25A. Silicone rubber compression-seal lug terminals. Completely immersion-proof.

- Single units have two terminals; duals have three terminals (one common); triple units have three terminals (case common).
- Standard position of Type ADM terminals is on side (MIL-C-25A Style CP53). Available also with terminals on top (ASTRON Type ADMT or MIL Style CP54) and bottom terminals (ASTRON Type ADMB or MIL Style CP55).
- Cap. Tolerance: ±20%.

Military Number	Astron Type	L. x W. x H.
100 VOLTS DC WORKING		
AS-CP53B1EB105M	ADM-1-1M	1 1/4 x 1 x 7/8
AS-CP53B1EB205M	ADM-1-2M	2 x 1 3/4 x 7/8
AS-CP53B1EB405M	ADM-1-4M	2 x 2 x 1 1/8
200 VOLTS DC WORKING		
AS-CP53B1EC504M	ADM-2-5	1 1/4 x 1 x 7/8
AS-CP53B1EC105M	ADM-2-1M	2 x 1 3/4 x 7/8
AS-CP53B1EC205M	ADM-2-2M	2 x 2 x 1
400 VOLTS DC WORKING		
AS-CP53B1EE504M	ADM-4-5	1 1/4 x 1 x 7/8
AS-CP53B1EE105M	ADM-4-1M	2 x 1 3/4 x 7/8
AS-CP53B5EE504M	ADM-4-3x5	2 x 2 x 1 1/8
600 VOLTS DC WORKING		
AS-CP53B1EF503M	ADM-6-05	1 1/4 x 1 x 3/4
AS-CP53B1EF104M	ADM-6-1	1 1/4 x 1 x 3/4
AS-CP53B1EF254M	ADM-6-25	1 1/4 x 1 x 3/4
AS-CP53B1EF504M	ADM-6-5	1 1/4 x 1 x 1
AS-CP53B1EF105M	ADM-6-1M	2 x 1 1/4 x 1
AS-CP53B1EF205M	ADM-6-2M	2 x 2 x 1 1/8 *
AS-CP53B4EF503M	ADM-6-2x05	1 1/4 x 1 x 3/4
AS-CP53B4EF104M	ADM-6-2x1	1 1/4 x 1 x 3/4
AS-CP53B4EF254M	ADM-6-2x25	1 1/4 x 1 x 1
AS-CP53B4EF504M	ADM-6-2x5	2 x 1 1/4 x 1
AS-CP53B4EF105M	ADM-6-2x1M	2 x 2 x 1 1/8 *
AS-CP53B5EF503M	ADM-6-3x05	1 1/4 x 1 x 3/4
AS-CP53B5EF104M	ADM-6-3x1	1 1/4 x 1 x 7/8
AS-CP53B5EF254M	ADM-6-3x25	2 x 1 1/4 x 7/8
AS-CP53B5EF504M	ADM-6-3x5	2 x 2 x 1 1/8 *
1000 VOLTS DC WORKING		
AS-CP53B1EG503M	ADM-10-05	1 1/4 x 1 x 3/4
AS-CP53B1EG104M	ADM-10-1	1 1/4 x 1 x 3/4
AS-CP53B1EG254M	ADM-10-25	1 1/4 x 1 x 7/8
AS-CP53B1EG504M	ADM-10-5	2 x 1 1/4 x 7/8
AS-CP53B1EG105M	ADM-10-1M	2 x 2 x 1 1/8
AS-CP53B4EG503M	ADM-10-2x05	1 1/4 x 1 x 3/4
AS-CP53B4EG104M	ADM-10-2x1	1 1/4 x 1 x 3/4
AS-CP53B4EG254M	ADM-10-2x25	2 x 1 1/4 x 7/8
AS-CP53B4EG504M	ADM-10-2x5	2 x 2 x 1 1/8
AS-CP53B5EG503M	ADM-10-3x05	1 1/4 x 1 x 3/4
AS-CP53B5EG104M	ADM-10-3x1	2 x 1 1/4 x 7/8
AS-CP53B5EG254M	ADM-10-3x25	2 x 2 x 1 1/8



capacitors

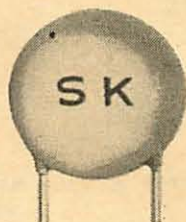
ASTRON CORPORATION

EAST NEWARK, N. J.

TEMPERATURE COMPENSATING CERAMIC CAPACITORS DISC (TCD)



PECKVILLE, PENNSYLVANIA
A WHOLLY-OWNED SUBSIDIARY
OF ASTRON CORPORATION



CHARACTERISTICS AND APPLICATIONS: Changes in ambient temperature affect the values of the various components which make up any receiver. This alters the exact frequency of resonance as is illustrated by some "drifty" tuners which must be retuned after they have warmed up. It is possible to control this by introducing reactive components of such temperature characteristics and of such values as to offset the undesired changes.

Available Capacitance-temperature characteristics range from a change of plus 100 parts per million per degree centigrade (P100) to a negative change of 5600 parts per million (N5600).

MAXIMUM CAPACITANCES (MMFD) VS. SIZE

SKOTTIE STYLE:	TCD-4	TCD-5	TCD-8	TCD-10	TCD-12
Max. Dia.	.290"	.410"	.570"	.670"	.790"
Raw Disc	4/16"	5/16"	8/16"	10/16"	12/16"
Temperature Coefficient	Minimum & Maximum	Max.	Max.	Max.	Max.
P100	0 to 6	9	28	—	—
NPO	1 to 15	34	56	100	115
NO30	1 to 16	35	56	100	125
NO80	3 to 17	36	60	105	140
N150	3 to 18	40	75	110	150
N220	3 to 23	52	80	120	160
N330	3 to 25	56	90	135	170
N470	3 to 30	60	120	150	200
N750	3 to 45	82	150	200	300
N1500	20 to 65	150	200	250	330
N2200	20 to 100	160	250	275	470
N3300	20 to 175	234	598	910	1100
N4700	30 to 275	300	657	1000	1210
N5600	40 to 350	381	900	1090	1325

SPECIFICATIONS: TCD

WORKING VOLTAGE: 500 V.D.C. (Higher voltages available.)

TEST VOLTAGE (Flash): 2000 V.D.C.

"Q": Over 1000 at 1 megacycle, for capacitances of 15 mmf and up.

INITIAL LEAKAGE RESISTANCE: Over 10000 megohms.

CAPACITANCE TOLERANCE: At 25°C: ±5% ±10% ±20%. (Special tolerances available).

INSULATION: Durez - vacuum-wax impregnated.

LEADS: No. 22 tinned copper (.026" diameter).

CODING: Capacitance, tolerance, and temperature coefficient stamped on disc.

PRINTED CIRCUIT CONSTRUCTION AVAILABLE ON ALL TYPES.

ALL-PURPOSE CERAMIC CAPACITORS

SKOTTIE STYLE TXD all purpose ceramics provide the highest available capacitances at 250°C. in the smallest possible size. These capacitors exhibit less capacitance change with temperature than the limits specified in the EIA RS-198 specification for Z5U ceramics. This specification allows a maximum capacitance change of +22% and -56% along a temperature range of +10°C. to +85°C.

CAPACITANCES (MMFD) VS. SIZE

SKOTTIE STYLE:	TXD-4	TXD-5	TXD-8	TXD-10	TXD-12
Max. Dia.	.290"	.410"	.570"	.670"	.790"
Raw Disc	4/16"	5/16"	8/16"	10/16"	12/16"
Standard Values:	120 mmf	680 mmf	.0018 mfd	.0047 mfd	.01 mfd
(others available)	150 " 750 "	.002 "	.005 "	.015 "	.02 mfd
	220 " 800 "	.0022 "	.0068 "	.018 "	.02 ±80
	330 " 820 "	.0025 "	.0075 "	.02 ±20%	2 x .005
	470 " .001 mfd	.0027 "	.0082 "		
	500 " .0012 "	.003 "	.01 ±20%		
	560 " .0015 "	.0033 "			

SPECIFICATIONS: TXD, TSD, TFD

WORKING VOLTAGE: 500 W.V.D.C. (Higher voltages available.)

TEST VOLTAGE (Flash): 2000 W.V.D.C.

POWER FACTOR: 1.5% Maximum at 1kc (initial).

CAPACITANCE: Measured at 25°C, an RMS voltage between 0.5 and 5.0 and a frequency of 1kc.

INITIAL INSULATION RESISTANCE: Over 10000 megohms.

INSULATION: Durez - vacuum-wax impregnated.

LEADS: No. 22 tinned copper (.026" diameter).

CODING: Manufacturer's identification, capacitance and tolerance stamped on disc.

CAPACITANCE TOLERANCES: Available as shown.

SKOTTIE STYLE TFD: Semi-stable Capacitance Ceramics exceed the standards specified in the EIA RS-198 specification for Y5S temperature characteristics. This specification allows a maximum capacitance change of ±22% along a temperature range of -30°C to +85°C. These capacitors exhibit excellent capacitance stability with voltage and frequency and afford relatively high capacitance vs. size.

TEMPERATURE COEFFICIENT OF CAPACITANCE

Temperature Range	Max. % Cap. Change from 25°C. Value
-55°C to +85°C	+3% to -7.5%
-30°C to +85°C	+3% to -3%
+10°C to +85°C	+3% to -3%
+10°C to +125°C	+5% to -7.5%

CAPACITANCE (MMFD) VS. SIZE

SKOTTIE STYLE:	TSD-4	TSD-5	TSD-8	TSD-10	TSD-12
Max. Dia.	.290"	.410"	.570"	.670"	.790"
Raw Disc	4/16"	5/16"	8/16"	10/16"	12/16"
Max. Capacitance (mmfd)	500	1200	2200	3000	5000

(Specify desired Capacitance)

CAPACITANCE (MMFD) VS. SIZE

SKOTTIE STYLE:	TFD-4	TFD-5	TFD-8	TFD-10	TFD-12
Max. Capacitance (mmfd)	1000	2000	3500	5000	10000
Max. Dia.	.290"	.400"	.570"	.670"	.790"
Raw Disc	4/16"	5/16"	8/16"	10/16"	12/16"

(Specify desired Capacitance)