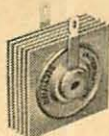




• TV AND RADIO RECTIFIERS



The basic replacement rectifier line offering the widest range in the industry. Input ratings from 25 to 195 volts AC and up. DC output current 10 to 1,200 MA.

HIGH DENSITY TYPES — RATINGS & DIMENSIONS

Catalog Number	Output Current Range, ma	Max. RMS Volts	Min. Series Resistor, Ohms	Dimensions, Inches	
				Nom. Plate Size	Max. Mounting Dimension
T065	to 65	130	22	0.67 X 0.67	3/4
T100	to 100	130	22	1 X 1	1 1/8
T150	to 150	130	15	1 X 1	1 1/8
T075-T150	75-150	130	15	1 X 1	3/4
T200-T300	150-300	130	5	1.25 X 1.25	1 1/8
T350-T400	300-400	130	5	1.5 X 1.5	1 1/8
T450-T500	400-500	130	5	1.5 X 1.5	1 1/8
T550-T650	500-650	130	5	2 X 2	2

UNIVERSAL REPLACEMENT TYPES

MR300	300	130	5	1.5 X 1.5	1 1/8
RS350	350	130	5	2 X 2	1 1/8
RS400	400	130	5	2 X 2	1 1/8
MR500	500	130	5	2 X 2	1 1/8

SILICON REPLACEMENT RECTIFIER

Hermetically sealed to provide positive safeguard against contaminants destroying the rectifier junction. Assures long, trouble-free life. Manufactured to the same rigid requirements specified for critical military and industrial applications.

Type No.	Max. DCMA	Max. RMS Volts	Peak Inv. Volts
SD-91	300	70	100
SD-92	300	140	200
SD-93	300	210	300
SD-94	300	280	400
SD-95	300	350	500
SD-500	500	130	400
5E4	350	140	400
TV-500	750	130	400
TV-502	750	260	800

• SILICON SOLAR CELLS

UNMOUNTED CELL TYPES—COMMERCIAL GRADES I

TYPICAL ELECTRICAL CHARACTERISTICS FOR MAXIMUM POWER TRANSFER AT 30°C CELL TEMPERATURE

CELL TYPE	OVERALL DIMENSIONS (cm x cm)	NOMINAL ACTIVE AREA CM ²	AVG. CONVERSION EFFICIENCY %	INCIDENT ENERGY 100 MW/CM ² (1 SUN)		
				OUTPUT POWER MW	APPROX. OUTPUT VOLTAGE VOLTS	APPROX. OUTPUT CURRENT MA
S1020	1 x 2	1.75	4	7.0	35.4	17.5
S1020A	1 x 2	1.75	6	10.5	4	25
S1020B	1 x 2	1.75	8	14.0	4	35
S0520	1/2 x 2	.75	4	3.0	35.4	7.5
S0520A	1/2 x 2	.75	6	4.5	4	11.2
S0520B	1/2 x 2	.75	8	6.0	4	15
S0510	1/2 x 1	.37	4	1.5	35.4	3.8
S0510A	1/2 x 1	.37	6	2.25	4	5.6
S0510B	1/2 x 1	.37	8	3.0	4	7.5

Module Types and Typical Characteristics

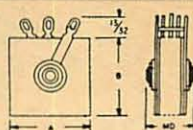
for Maximum Power Transfer Design (at 100 mw/cm² solar energy radiation (1 sun), 30°C cell temperature)

MODULE TYPE	NUMBER OF CELLS IN SERIES	CONVERSION EFFICIENCY AT MAX. POWER OUTPUT, %	MAX. POWER OUTPUT, MW	TYPICAL OUTPUT VOLT. AT MAX. POWER, VOLTS	TYPICAL OUTPUT CURRENT AT MAX. POWER, MA
SD-1020A	1	4 to 6	7 to 10.5	0.32	27
SD-1020B	1	6 to 8	10.5 to 14	0.35	35
SD2-1020A	2	4 to 6	14 to 21	0.64	27
SD2-1020B	2	6 to 8	21 to 28	0.70	35
SMS-1020A	5	4 to 6	35 to 52.5	1.60	27
SMS-1020B	5	6 to 8	52.5 to 70	1.75	35

• SINGLE PLATE HALF WAVE RECTIFIERS



These rectifiers are used for small power applications. Voltage regulation of 15% to 20% may be realized. Ratings shown are for resistive load.



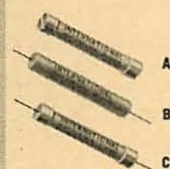
Catalog Number	Max. DC MA	Max. RMS Volts	Min. Series Resistor Ohms	Dimensions			Catalog Number
				Nominal		Max.	
				A	B	MD	
Q1H	65	25	47	.67"	.67"	3/8"	Q1H
A1H	100	25	22	1"	1"	3/8"	A1H
B1H	150	25	15	1.2"	1.2"	3/8"	B1H
C1H	250	25	5	1.5"	1.5"	3/8"	C1H
M1H	500	25	5	2"	2"	3/8"	M1H

• FULL WAVE BRIDGE RECTIFIERS

Q1B	100	25	.67"	.67"	3/8"	Q1B
Q4B	100	130	.67"	.67"	1 1/8"	Q4B
A1B	180	25	1"	1"	3/8"	A1B
B1B	300	25	1.2"	1.2"	3/8"	B1B
C1B	600	25	1.5"	1.5"	3/8"	C1B
M1B	1200	25	2"	2"	3/8"	M1B

Trade discounts apply only to list price items. Prices subject to change without notice.

• HIGH VOLTAGE CARTRIDGE RECTIFIERS



These rectifiers are designed with ferrule terminals for quick insertion into, and withdrawal from, standard fuse clips. Recommended for high voltage power supplies where long life and extreme reliability are of prime importance.

Type	DC Output*		Max. Volt Input RMS	Peak Inverse Voltage	Case	Dimensions		Type
	Volts	MA				Dia.	Length	
V50HF	1000	5	1650	2400	A	1/4"	2 1/2"	V50HF
V75HF	1500	5	2475	3600	A	1/4"	3"	V75HF
V100HF	2000	5	3300	4800	A	1/4"	4"	V100HF
V125HF	2500	5	4125	6000	A	1/4"	4 1/2"	V125HF
V150HF	3000	5	4950	7200	A	1/4"	5 1/2"	V150HF
V175HF	3500	5	5775	8400	A	1/4"	6"	V175HF
U45HP	900	1.5	1485	2160	B	1/4"	2"	U45HP
U50HFP	1000	1.5	1650	2400	C	1/4"	2"	U50HFP

* Into Capacitive load.

• SELENIUM PHOTOELECTRIC CELLS

Type	Style	Cell Size	Average Output (µA)	Type
A-15	Unmounted	2" diam.	750	A-15
A-10	Unmounted	1 1/2" diam.	500	A-10
A-5	Unmounted	1 1/4" diam.	250	A-5
A-2	Unmounted	1/2" diam.	12	A-2
B-15	Unmounted	1 1/2" x 1 1/8"	750	B-15
B-10	Unmounted	1 1/4" x 7/8"	350	B-10
B-5	Unmounted	1 1/4" x 3/4"	220	B-5
B-2	Unmounted	3/4" x 3/4"	75	B-2
B-1	Unmounted	3/8" x 3/8"	32	B-1
A-15M	Mounted	2" diam.	750	A-15M
A-10M	Mounted	1 1/2" diam.	350	A-10M
A-5M	Mounted	1 1/4" diam.	220	A-5M
A-2M	Mounted	1/2" diam.	12	A-2M
B-10M	Mounted	1 1/4" x 7/8"	350	B-10M
**DP-2	Mounted	1 1/2" x 1 1/8"	24	**DP-2
**DP-3	Mounted	3/4" x 3/4"	60	**DP-3
**DP-5	Mounted	1 1/4" x 1 1/8"	600	**DP-5
B-2M	Mounted	3/4" x 3/4"	55	B-2M

* At 100 ft. candles illumination and 100 ohm external resistance. ** Hermetically sealed.

PB-1 The Use of Selenium Photocells and Sun Batteries PB-1

International Rectifier CORPORATION

El Segundo, California • In Canada: Atlas Radio Corp., Ltd., Toronto, Ontario

Descriptive literature available on request. Write Product Information Department on your letterhead.

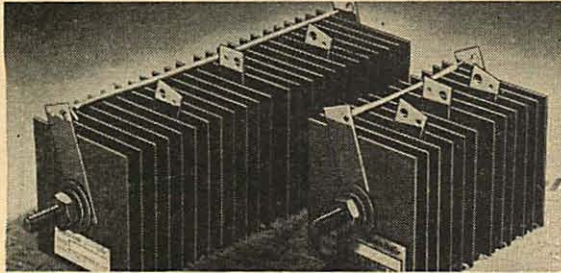
THE WORLD'S LARGEST SUPPLIER OF INDUSTRIAL METALLIC RECTIFIERS



International Rectifier

C O R P O R A T I O N

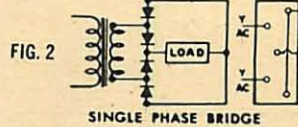
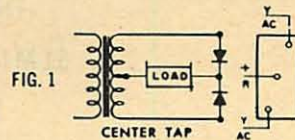
• SELENIUM INDUSTRIAL POWER RECTIFIERS



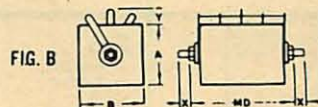
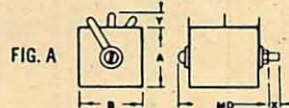
Where space and weight considerations are paramount, these high voltage and current rectifiers will deliver approximately twice the current output of standard selenium units. They possess high inverse voltage ratings and outstanding ability to handle temporary overloads. They feature direct adaptability to a wide range of industrial and commercial applications, and require no paralleling devices in installation for voltage division.

Type	Output		Max. Input AC Volts	Circuit & Connecting Diag. Fig.	Dimensions (Inches)						
	DC Volts	DC Amp			Fig.	A	B	MD*	X	Y	Stud
J14C04	0	0.4	36	1	A	1	1	1 1/8	1/8	1/4	8-32
J14C1		1.5	36	1	A	1 1/2	1 1/2	1 1/8	3/8	3/8	8-32
J14C5	to	4.8	36	1	A	3	3	1 1/8	3/4	5/8	3/8-16
J14C8		8.4	36	1	A	4	4	1 1/8	3/4	1 1/8	3/8-16
J14C17	14	17.0	36	1	A	6	5	2 1/8	3/4	1 1/4	3/8-16
J29B04	0	0.4	36	2	B	1	1	1 1/2	3/8	1/4	8-32
J29B1		1.5	36	2	B	1 1/2	1 1/2	1 1/2	3/8	3/8	8-32
J29B5	to	4.8	36	2	B	3	3	2 5/8	3/4	5/8	3/8-16
J29B8		8.4	36	2	B	4	4	2 5/8	3/4	1 1/8	3/8-16
J29B17	29	17.0	36	2	B	6	5	3 3/4	3/4	1 1/4	3/8-16
J58B04	0	0.4	72	2	B	1	1	2 1/4	3/8	1/4	8-32
J58B1		1.5	72	2	B	1 1/2	1 1/2	2 1/4	3/8	3/8	8-32
J58B5	to	4.8	72	2	B	3	3	4 3/8	3/4	5/8	3/8-16
J58B8		8.4	72	2	B	4	4	4 3/8	3/4	1 1/8	3/8-16
J58B17	58	17.0	72	2	B	6	5	5 5/8	3/4	1 1/4	3/8-16
J116B04	0	0.4	144	2	B	1	1	3 1/8	3/8	1/4	8-32
J116B1		1.5	144	2	B	1 1/2	1 1/2	3 1/8	3/8	3/8	8-32
J116B5	to	4.8	144	2	B	3	3	7 3/8	3/4	5/8	3/8-16
J116B8		8.4	144	2	B	4	4	7 3/8	3/4	1 1/8	3/8-16
J116B17	116	17.0	144	2	B	6	5	10 1/4	3/4	1 1/4	3/8-16
J135B04	0	0.4	180	2	B	1	1	4 3/8	3/8	1/4	8-32
J135B1		1.5	180	2	B	1 1/2	1 1/2	4 3/8	3/8	3/8	8-32
J135B5	to	4.8	180	2	B	3	3	8 1/8	3/4	5/8	3/8-16
J135B8		8.4	180	2	B	4	4	8 1/8	3/4	1 1/8	3/8-16
J135B17	135	17.0	180	2	B	6	5	12 3/8	3/4	1 1/4	3/10-16

Circuit and Connecting Diagrams



Diagrams of Dimensions



• 25 AMP SILICON POWER RECTIFIERS



Part Number	Rated PIV ¹	RMS Max. ²	Recommended ³ Max. RMS Volts
25H5	50	35	12
25H10	100	70	24
25H15	150	105	36
25H20	200	140	48
25H25	250	175	60
25H30	300	210	72
25H35	350	245	84
25H40	400	280	96
25H45	450	310	108
25H50	500	350	120

A WORLD OF DIFFERENCE



THROUGH RESEARCH

International Rectifier

C O R P O R A T I O N

El Segundo, California • In Canada: Atlas Radio Corp., Ltd., Toronto, Ontario

Descriptive literature available on request. Write Product Information Department on your letterhead.

THE WORLD'S LARGEST SUPPLIER OF INDUSTRIAL METALLIC RECTIFIERS