

SANGAMO ELECTRIC COMPANY

capacitors



ELECTRONIC COMPONENTS

Type DCM Computer Grade FILTER AND ENERGY STORAGE ELECTROLYTIC CAPACITOR



Type DCM	Capacitor Diameter (Inches)	Net Price
	1-7/16	\$0.24
	1-13/16	0.33
Mounting Bracket	2-1/16	0.36
	2-9/16	0.48
	3-1/16	0.60

Note: 1-7/16" bracket available with 2 feet only. Two or 3 feet are available in other sizes.

The SANGAMO Type DCM is a high quality, long life, electrolytic capacitor, specially designed for use as an energy storage or filter capacitor at 65°C. The Type DCM is enclosed in an aluminum can and is normally furnished with a clear plastic insulating sleeve. Aluminum terminals, which are permanently molded into the top, include #10-32 machine screws. A pressure-sensitive is provided as a safety mechanism in each top. A footed, wrap-around mounting bracket is available at extra cost. For more complete information write for Bulletin 2231.

Catalog Number	Cap. (Mfd)	Rated Volts d-c	Case Sizes *		Term. * Ctr. to Ctr.	Net Price 1-24†	Catalog Number	Cap. (Mfd)	Rated Volts d-c	Case Sizes *		Term. * Ctr. to Ctr.	Net Price 1-24†
			Diameter	Length						Diameter	Length		
539-2619-01	33,000	5	2-1/16	4-1/2	.875	\$ 7.62	539-2553-01	450	75	1-7/16	2-1/2	.500	\$ 2.85
539-2621-01	125,000	5	3-1/16	6	1.250	16.71	539-2554-01	900	75	1-7/16	3-1/2	.500	3.78
539-2530-01	3,750	10	1-7/16	2-1/2	.500	3.36	539-2653-01	1,000	75	1-7/16	4-1/2	.500	4.02
539-2531-01	7,000	10	1-7/16	3-1/2	.500	4.20	539-2555-01	1,350	75	1-7/16	4-1/2	.500	4.29
539-2622-01	10,000	10	1-7/16	4-1/2	.500	5.10	539-2654-01	3,000	75	2-1/16	4-1/2	.875	6.27
539-2736-01	15,000	10	1-13/16	4-1/2	.750	5.73	539-2656-01	5,000	75	2-9/16	4-1/2	1.125	10.23
539-2623-01	20,000	10	2-1/16	4-1/2	.875	8.07	539-2557-01	7,750	75	3-1/16	4-1/2	1.250	12.84
539-2624-01	35,000	10	2-1/16	6	.875	10.92	539-2657-01	10,000	75	3-1/16	6	1.250	16.20
539-2625-01	40,000	10	2-9/16	4-1/2	1.125	12.12							
539-2626-01	60,000	10	3-1/16	4-1/2	1.250	15.39	539-2558-01	350	100	1-7/16	2-1/2	.500	3.00
539-2627-01	90,000	10	3-1/16	6	1.250	19.77	539-2559-01	500	100	1-7/16	3-1/2	.500	3.18
539-2532-01	2,500	15	1-7/16	2-1/2	.500	2.94	539-2658-01	1,000	100	1-7/16	4-1/2	.500	4.41
539-2533-01	5,000	15	1-7/16	3-1/2	.500	4.17	539-2742-01	1,500	100	1-13/16	4-1/2	.750	4.86
539-2628-01	6,000	15	1-7/16	4-1/2	.500	4.23	539-2597-01	3,000	100	2-1/16	6	.875	9.42
539-2534-01	8,000	15	1-7/16	4-1/2	.500	4.98	539-2660-01	4,000	100	2-9/16	4-1/2	1.125	9.96
539-2737-01	10,000	15	1-13/16	4-1/2	.750	5.34	539-2661-01	5,000	100	3-1/16	4-1/2	1.250	10.71
539-2738-01	14,000	15	1-13/16	4-1/2	.750	6.94	539-2662-01	8,500	100	3-1/16	6	1.250	16.35
539-2629-01	18,000	15	2-1/16	4-1/2	.875	8.49							
539-2630-01	25,000	15	2-1/16	6	.875	10.95	539-2560-01	250	150	1-7/16	2-1/2	.500	2.64
539-2631-01	33,000	15	2-9/16	4-1/2	1.125	11.28	539-2663-01	500	150	1-7/16	3-1/2	.500	3.84
539-1246-02	35,000	15	3-1/16	4-1/2	1.250	11.34	539-2664-01	700	150	1-7/16	4-1/2	.500	4.32
539-2632-01	40,000	15	3-1/16	4-1/2	1.250	12.48	539-2561-01	750	150	1-7/16	4-1/2	.500	4.41
539-2598-01	45,000	15	3-1/16	4-1/2	1.250	13.77	539-2743-01	1,000	150	1-13/16	4-1/2	.750	4.83
539-2673-01	50,000	15	3-1/16	6	1.250	15.12	539-2744-01	1,250	150	1-13/16	4-1/2	.750	5.22
539-2633-01	60,000	15	3-1/16	6	1.250	17.67	539-2562-01	1,450	150	1-13/16	4-1/2	.750	6.12
539-2535-01	2,250	20	1-7/16	2-1/2	.500	2.97							
539-2536-01	4,500	20	1-7/16	3-1/2	.500	4.32	539-2861-01	1,850	150	2-1/16	4-1/2	.875	7.71
539-2537-01	6,500	20	1-7/16	4-1/2	.500	4.77	539-2665-01	2,000	150	2-1/16	6	.875	8.37
539-2538-01	10,000	20	1-13/16	4-1/2	.750	5.85	539-2666-01	2,500	150	2-9/16	4-1/2	1.125	9.57
539-2539-01	14,750	20	2-1/16	4-1/2	.875	8.04	539-2654-01	3,000	150	2-9/16	4-1/2	1.125	10.44
539-2540-01	22,000	20	2-1/16	6	.875	10.56	539-2667-01	4,000	150	3-1/16	4-1/2	1.250	12.63
539-2541-01	25,000	20	2-9/16	4-1/2	1.125	11.10	539-2565-01	4,500	150	3-1/16	4-1/2	1.250	13.29
539-2542-01	35,000	20	3-1/16	4-1/2	1.250	13.50	539-2668-01	6,000	150	3-1/16	6	1.250	15.18
539-2543-01	50,000	20	3-1/16	6	1.250	16.92							
539-2544-01	1,500	25	1-7/16	2-1/2	.500	2.79	539-2566-01	200	200	1-7/16	2-1/2	.500	3.12
539-2545-01	3,000	25	1-7/16	3-1/2	.500	3.69	539-2669-01	500	200	1-7/16	4-1/2	.500	4.17
539-2634-01	5,000	25	1-7/16	4-1/2	.500	4.74	539-2745-01	750	200	1-13/16	4-1/2	.750	5.37
539-2739-01	8,000	25	1-13/16	4-1/2	.750	6.12	539-2670-01	1,500	200	2-1/16	6	.875	7.65
539-2635-01	10,000	25	2-1/16	4-1/2	.875	7.26	539-2671-01	2,000	200	2-9/16	4-1/2	1.125	9.18
539-2636-01	15,000	25	2-1/16	6	.875	10.20	539-2672-01	2,500	200	3-1/16	4-1/2	1.250	10.80
539-2637-01	20,000	25	2-9/16	4-1/2	1.125	10.59	539-2570-01	4,500	200	3-1/16	6	1.250	14.13
539-2638-01	25,000	25	3-1/16	4-1/2	1.250	11.22							
539-2639-01	40,000	25	3-1/16	6	1.250	17.55	539-2746-01	500	250	1-13/16	4-1/2	.750	4.50
539-2640-01	1,500	35	1-7/16	3-1/2	.500	3.03	539-2575-01	1,000	250	2-1/16	4-1/2	.875	9.81
539-2547-01	2,500	35	1-7/16	3-1/2	.500	3.60	539-2874-01	1,500	250	2-9/16	4-1/2	1.125	10.83
539-2641-01	4,000	35	1-7/16	4-1/2	.500	4.50	539-2675-01	275	300	1-7/16	4-1/2	.500	4.50
539-2740-01	5,000	35	1-13/16	4-1/2	.750	5.31	539-2747-01	450	300	1-13/16	4-1/2	.750	5.10
539-2548-01	7,000	35	1-13/16	4-1/2	.750	6.69	539-2676-01	1,000	300	2-9/16	4-1/2	1.125	11.22
539-2642-01	8,000	35	2-1/16	4-1/2	.875	6.58	539-2677-01	1,500	300	3-1/16	4-1/2	1.250	17.73
539-2549-01	9,000	35	2-1/16	4-1/2	.875	7.71							
539-2643-01	10,000	35	2-1/16	6	.875	8.31	539-2584-01	150	350	1-7/16	3-1/2	.500	4.08
539-2550-01	13,500	35	2-1/16	6	.875	10.53	539-2748-01	350	350	1-13/16	4-1/2	.750	5.49
539-2644-01	15,000	35	2-9/16	4-1/2	1.125	11.07	539-2678-01	1,000	350	3-1/16	4-1/2	1.250	11.73
539-2645-01	20,000	35	3-1/16	4-1/2	1.250	12.12	539-2590-01	50	400	1-7/16	2-1/2	.500	3.00
539-2646-01	30,000	35	3-1/16	6	1.250	13.92	539-2595-01	50	450	1-7/16	2-1/2	.500	3.60
539-2551-01	750	50	1-7/16	2-1/2	.500	2.88	539-2682-01	100	450	1-7/16	3-1/2	.500	4.50
539-1615-03	1,000	50	1-7/16	3-1/2	.500	3.24	539-2596-01	150	450	1-7/16	4-1/2	.500	5.04
539-2552-01	1,500	50	1-7/16	3-1/2	.500	3.69							
539-1463-03	2,000	50	1-7/16	4-1/2	.500	3.81	539-2749-01	250	450	1-13/16	4-1/2	.750	5.94
539-2647-01	2,500	50	1-7/16	4-1/2	.500	4.08	539-2683-01	300	450	2-1/16	4-1/2	.875	6.33
539-2741-01	4,000	50	1-13/16	4-1/2	.750	5.49	539-2684-01	500	450	2-1/16	6	.875	8.04
539-2648-01	5,000	50	2-1/16	4-1/2	.875	7.11	539-2685-01	600	450	2-9/16	4-1/2	1.125	9.90
539-2649-01	8,000	50	2-1/16	6	.875	8.79	539-2686-01	800	450	3-1/16	4-1/2	1.250	11.46
539-2650-01	10,000	50	2-9/16	4-1/2	1.125	11.46	539-2687-01	850	450	3-1/16	4-1/2	1.250	12.24
539-2651-01	15,000	50	3-1/16	4-1/2	1.250	13.65							
539-2652-01	20,000	50	3-1/16	6	1.250	16.71							

STANDARD STOCK ITEMS

*All dimensions are in inches.
†Prices for larger quantities are available on request.

SANGAMO ELECTRIC COMPANY

capacitors



ELECTRONIC COMPONENTS

Type 500 Computer Electrolytic

FOR HIGH RIPPLE AND HIGH TEMPERATURE APPLICATIONS

The Sangamo Type 500 capacitor represents the optimum design in electrolytic capacitors for storage and filter requirements in high reliability circuits requiring 85°C operation. An exceptional anode surface gain and better production control have been achieved in perfecting the Type 500. These advanced techniques, plus the use of the best electrolytes, result in capacitors having lower ESR which may be operated at higher ripple currents and in case sizes smaller than conventional capacitors. All units are supplied with screw terminals. Mounting brackets are furnished at extra cost. For more complete information write for Bulletin 2236.



Type 500 Mounting Bracket	Capacitor Diameter	Net Price
	1-3/8"	\$0.24
	2"	0.36
	2-1/2"	0.48
	3"	0.60

Note: 1-3/8" bracket available with 2 feet only. Other sizes are available with 2 or 3 feet. Specify accordingly.

Catalog Number	Cap. (Mfd)	Rated Volts d-c	Case Sizes*		Term.* Ctr. to Ctr.	Net Price 1-24†	Catalog Number	Cap. (Mfd)	Rated Volts d-c	Case Sizes*		Term.* Ctr. to Ctr.	Net Price 1-24†
			Diameter	Length						Diameter	Length		
500-1001-01	10,000	3	1-3/8	2-1/8	.500	\$ 3.63	500-1067-01	1,400	75	1-3/8	4-1/8	.500	\$ 5.04
500-1002-01	20,000	3	1-3/8	3-1/8	.500	6.21	500-1068-01	3,100	75	2	4-1/8	.875	7.35
500-1003-01	28,000	3	1-3/8	4-1/8	.500	7.26	500-1069-01	4,500	75	2	5-1/2	.875	9.51
500-1004-01	60,000	3	2	4-1/8	.875	11.25	500-1070-01	5,300	75	2-1/2	4-1/8	1.125	10.74
500-1005-01	87,000	3	2	5-1/2	.875	14.43	500-1071-01	8,000	75	3	4-1/8	1.250	15.39
500-1006-01	100,000	3	2-1/2	4-1/8	1.125	16.02	500-1072-01	11,200	75	3	5-1/2	1.250	19.92
500-1007-01	150,000	3	3	4-1/8	1.250	23.85							
500-1008-01	210,000	3	3	5-1/2	1.250	36.81							
500-1009-01	7,500	5	1-3/8	2-1/8	.500	4.02	500-1073-01	400	100	1-3/8	2-1/8	.500	3.51
500-1010-01	13,000	5	1-3/8	3-1/8	.500	5.73	500-1074-01	725	100	1-3/8	3-1/8	.500	4.29
500-1011-01	20,000	5	1-3/8	4-1/8	.500	6.90	500-1075-01	1,100	100	1-3/8	4-1/8	.500	5.25
500-1012-01	40,000	5	2	4-1/8	.875	9.63	500-1076-01	2,400	100	2	4-1/8	.875	8.43
500-1013-01	55,000	5	2	5-1/2	.875	11.82	500-1077-01	3,500	100	2	5-1/2	.875	11.13
500-1014-01	70,000	5	2-1/2	4-1/8	1.125	13.86	500-1078-01	4,100	100	2-1/2	4-1/8	1.125	11.46
500-1015-01	100,000	5	3	4-1/8	1.250	17.10	500-1079-01	6,200	100	3	4-1/8	1.250	14.55
500-1016-01	150,000	5	3	5-1/2	1.250	25.08	500-1080-01	9,000	100	3	5-1/2	1.250	19.26
500-1017-01	5,000	10	1-3/8	2-1/8	.500	4.23	500-1081-01	290	150	1-3/8	2-1/8	.500	3.36
500-1018-01	10,000	10	1-3/8	3-1/8	.500	5.88	500-1082-01	550	150	1-3/8	3-1/8	.500	4.56
500-1019-01	15,000	10	1-3/8	4-1/8	.500	6.60	500-1083-01	800	150	1-3/8	4-1/8	.500	5.19
500-1020-01	30,000	10	2	4-1/8	.875	12.27	500-1084-01	1,850	150	2	4-1/8	.875	8.88
500-1021-01	40,000	10	2	5-1/2	.875	13.95	500-1085-01	2,500	150	2	5-1/2	.875	11.01
500-1022-01	50,000	10	2-1/2	4-1/8	1.125	16.11	500-1086-01	3,000	150	2-1/2	4-1/8	1.125	12.00
500-1023-01	80,000	10	3	4-1/8	1.250	20.97	500-1087-01	4,600	150	3	4-1/8	1.250	15.27
500-1024-01	110,000	10	3	5-1/2	1.250	26.34	500-1088-01	6,750	150	3	5-1/2	1.250	19.98
500-1025-01	4,500	15	1-3/8	2-1/8	.500	4.71	500-1089-01	200	200	1-3/8	2-1/8	.500	3.60
500-1026-01	8,000	15	1-3/8	3-1/8	.500	5.73	500-1090-01	400	200	1-3/8	3-1/8	.500	4.53
500-1027-01	12,000	15	1-3/8	4-1/8	.500	6.72	500-1091-01	575	200	1-3/8	4-1/8	.500	5.25
500-1028-01	24,000	15	2	4-1/8	.875	12.18	500-1092-01	1,300	200	2	4-1/8	.875	8.79
500-1029-01	35,000	15	2	5-1/2	.875	13.05	500-1093-01	1,800	200	2	5-1/2	.875	9.93
500-1030-01	40,000	15	2-1/2	4-1/8	1.125	14.34	500-1094-01	2,200	200	2-1/2	4-1/8	1.125	11.28
500-1031-01	65,000	15	3	4-1/8	1.250	21.78	500-1095-01	3,250	200	3	4-1/8	1.250	14.28
500-1032-01	90,000	15	3	5-1/2	1.250	29.04	500-1096-01	4,800	200	3	5-1/2	1.250	16.77
500-1033-01	3,300	20	1-3/8	2-1/8	.500	4.08	500-1097-01	160	250	1-3/8	2-1/8	.500	4.14
500-1034-01	6,000	20	1-3/8	3-1/8	.500	5.28	500-1098-01	300	250	1-3/8	3-1/8	.500	4.65
500-1035-01	9,000	20	1-3/8	4-1/8	.500	6.24	500-1099-01	430	250	1-3/8	4-1/8	.500	4.98
500-1036-01	19,000	20	2	4-1/8	.875	11.49	500-1100-01	1,000	250	2	4-1/8	.875	11.28
500-1037-01	25,000	20	2	5-1/2	.875	12.78	500-1101-01	1,400	250	2	5-1/2	.875	12.12
500-1038-01	30,000	20	2-1/2	4-1/8	1.125	13.50	500-1102-01	1,700	250	2-1/2	4-1/8	1.125	12.81
500-1039-01	48,000	20	3	4-1/8	1.250	18.99	500-1103-01	2,500	250	3	4-1/8	1.250	18.09
500-1040-01	68,000	20	3	5-1/2	1.250	24.30							
500-1041-01	2,400	25	1-3/8	2-1/8	.500	3.30	500-1104-01	110	300	1-3/8	2-1/8	.500	4.14
500-1042-01	4,600	25	1-3/8	3-1/8	.500	5.19	500-1105-01	210	300	1-3/8	3-1/8	.500	4.74
500-1043-01	6,500	25	1-3/8	4-1/8	.500	6.36	500-1106-01	310	300	1-3/8	4-1/8	.500	5.40
500-1044-01	14,000	25	2	4-1/8	.875	11.25	500-1107-01	700	300	2	4-1/8	.875	8.82
500-1045-01	19,000	25	2	5-1/2	.875	12.09	500-1108-01	1,000	300	2	5-1/2	.875	12.90
500-1046-01	24,000	25	2-1/2	4-1/8	1.125	12.75	500-1109-01	1,200	300	2-1/2	4-1/8	1.125	15.30
500-1047-01	35,000	25	3	4-1/8	1.250	18.03	500-1110-01	1,750	300	3	4-1/8	1.250	20.88
500-1048-01	50,000	25	3	5-1/2	1.250	24.24							
500-1049-01	1,600	35	1-3/8	2-1/8	.500	3.54	500-1111-01	80	350	1-3/8	2-1/8	.500	3.93
500-1050-01	3,000	35	1-3/8	3-1/8	.500	4.68	500-1112-01	150	350	1-3/8	3-1/8	.500	4.68
500-1051-01	4,500	35	1-3/8	4-1/8	.500	5.40	500-1113-01	220	350	1-3/8	4-1/8	.500	5.28
500-1052-01	9,500	35	2	4-1/8	.875	9.24	500-1114-01	500	350	2	4-1/8	.875	8.49
500-1053-01	15,000	35	2	5-1/2	.875	12.72	500-1115-01	750	350	2	5-1/2	.875	10.77
500-1054-01	17,000	35	2-1/2	4-1/8	1.125	13.23	500-1116-01	850	350	2-1/2	4-1/8	1.125	11.73
500-1055-01	25,000	35	3	4-1/8	1.250	14.97	500-1117-01	1,250	350	3	4-1/8	1.250	19.41
500-1056-01	36,000	35	3	5-1/2	1.250	17.28							
500-1057-01	1,000	50	1-3/8	2-1/8	.500	3.72	500-1118-01	60	400	1-3/8	2-1/8	.500	4.17
500-1058-01	1,900	50	1-3/8	3-1/8	.500	4.35	500-1119-01	115	400	1-3/8	3-1/8	.500	4.89
500-1059-01	2,900	50	1-3/8	4-1/8	.500	5.82	500-1120-01	165	400	1-3/8	4-1/8	.500	5.49
500-1060-01	6,200	50	2	4-1/8	.875	9.36	500-1121-01	390	400	2	5-1/2	.875	7.14
500-1061-01	10,000	50	2	5-1/2	.875	13.17	500-1122-01	560	400	2	4-1/8	.875	9.84
500-1062-01	11,000	50	2-1/2	4-1/8	1.125	14.16	500-1123-01	650	400	2-1/2	4-1/8	1.125	10.71
500-1063-01	16,000	50	3	4-1/8	1.250	16.41	500-1124-01	975	400	3	5-1/2	1.250	16.80
500-1064-01	24,000	50	3	5-1/2	1.250	20.49							
500-1065-01	510	75	1-3/8	2-1/8	.500	4.35	500-1125-01	55	450	1-3/8	2-1/8	.500	4.65
500-1066-01	950	75	1-3/8	3-1/8	.500	4.56	500-1126-01	100	450	1-3/8	3-1/8	.500	5.19
							500-1127-01	150	450	1-3/8	4-1/8	.500	5.79
							500-1128-01	330	450	2	4-1/8	.875	7.41
							500-1129-01	500	450	2	5-1/2	.875	9.24
							500-1130-01	600	450	2-1/2	4-1/8	1.125	11.40
							500-1131-01	850	450	3	4-1/8	1.250	14.07

S STANDARD STOCK ITEMS

*All dimensions are in inches.

† Prices for larger quantities are available on request.

SANGAMO ELECTRIC COMPANY

capacitors



ELECTRONIC COMPONENTS

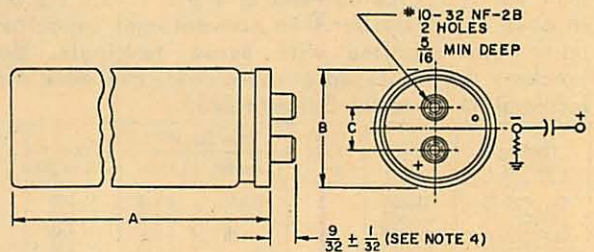
Type CE70 and CE71 MILITARY GRADE CAPACITORS

The Sangamo Types CE70 and CE71 are aluminum electrolytic capacitors designed and manufactured in accordance with Mil-C-62B. They are recommended for operation up to +85°C and are available in voltage ratings from 5 to 450 d-c volts. The Type CE70 is supplied with a plastic insulating sleeve. Commercial equivalents can be supplied which meet or exceed the applicable military requirements.



Type CE70 & CE71 Mounting Bracket	Capacitor Diameter (Inches)	Net Price
	1-7/16	\$.24
	2-1/16	.36
	2-9/16	.48
	3-1/16	.60

Note: 1-7/16" bracket available with 2 feet only. Other sizes are available with 2 or 3 feet.



- All dimensions in inches.
- Capacitors are mounted by means of a wraparound, footed-type bracket.
- There is an indeterminate resistance between the metal case and the negative terminal.
- This dimension shall be measured from the base of the container.

Type Designation*	Cap. (Mfd)	Rated Volts d-c	Case Sizes*		Term. * Ctr. to Ctr.	Net Price 1-24†	Type Designation*	Cap. (Mfd)	Rated Volts d-c	Case Sizes*		Term. * Ctr. to Ctr.	Net Price 1-24†
			Diam.	Length						Diam.	Length		
CE71C103C	10,000	5	1-7/16	4-1/2	.500	\$ 4.98	ⓈCE71C501J	500	150	1-7/16	4-1/2	.500	\$ 4.41
CE71C253C	25,000	5	2-1/16	4-1/2	.875	7.62	ⓈCE71C122J	1,200	150	2-1/16	4-1/2	.875	5.94
CE71C453C	45,000	5	2-9/16	4-1/2	1.125	10.38	ⓈCE71C202J	2,000	150	2-9/16	4-1/2	1.125	9.63
CE71C653C	65,000	5	3-1/16	4-1/2	1.250	13.56	ⓈCE71C322J	3,200	150	3-1/16	4-1/2	1.250	12.63
CE71C652D	6,500	10	1-7/16	4-1/2	.500	4.68	ⓈCE71C351K	350	200	1-7/16	4-1/2	.500	4.23
CE71C163D	16,000	10	2-1/16	4-1/2	.875	6.93	ⓈCE71C901K	900	200	2-1/16	4-1/2	.875	7.56
CE71C283D	28,000	10	2-9/16	4-1/2	1.125	11.76	ⓈCE71C152K	1,500	200	2-9/16	4-1/2	1.125	8.79
CE71C403D	40,000	10	3-1/16	4-1/2	1.250	13.95	ⓈCE71C222K	2,200	200	3-1/16	4-1/2	1.250	11.22
ⓈCE71C562E	5,600	15	1-7/16	4-1/2	.500	4.83	ⓈCE71C301M	300	250	1-7/16	4-1/2	.500	4.65
ⓈCE71C132E	12,000	15	2-1/16	4-1/2	.875	6.72	ⓈCE71C701M	700	250	2-1/16	4-1/2	.875	7.41
ⓈCE71C223E	22,000	15	2-9/16	4-1/2	1.125	11.34	ⓈCE71C122M	1,200	250	2-9/16	4-1/2	1.125	11.46
ⓈCE71C333E	33,000	15	3-1/16	4-1/2	1.250	12.96	ⓈCE71C192M	1,900	250	3-1/16	4-1/2	1.250	13.26
ⓈCE71C302F	3,000	25	1-7/16	4-1/2	.500	4.26	ⓈCE71C251N	250	300	1-7/16	4-1/2	.500	5.01
ⓈCE71C702F	7,000	25	2-1/16	4-1/2	.875	6.93	ⓈCE71C551N	550	300	2-1/16	4-1/2	.875	6.18
ⓈCE71C113F	11,000	25	2-9/16	4-1/2	1.125	8.97	ⓈCE71C971N	970	300	2-9/16	4-1/2	1.125	12.03
ⓈCE71C173F	17,000	25	3-1/16	4-1/2	1.250	12.09	ⓈCE71C152N	1,500	300	3-1/16	4-1/2	1.250	20.40
ⓈCE71C142G	1,400	50	1-7/16	4-1/2	.500	4.14	CE71C201P	200	350	1-7/16	4-1/2	.500	5.13
ⓈCE71C332G	3,300	50	2-1/16	4-1/2	.875	6.12	CE71C451P	450	350	2-1/16	4-1/2	.875	7.56
ⓈCE71C562G	5,600	50	2-9/16	4-1/2	1.125	8.88	CE71C751P	750	350	2-9/16	4-1/2	1.125	10.62
ⓈCE71C902G	9,000	50	3-1/16	4-1/2	1.250	11.73	CE71C122P	1,200	350	3-1/16	4-1/2	1.250	15.30
ⓈCE71C701H	700	100	1-7/16	4-1/2	.500	4.17	CE71C151Q	150	400	1-7/16	4-1/2	.500	5.34
ⓈCE71C182H	1,800	100	2-1/16	4-1/2	.875	5.94	CE71C351Q	350	400	2-1/16	4-1/2	.875	7.08
ⓈCE71C312H	3,100	100	2-9/16	4-1/2	1.125	10.89	CE71C601Q	600	400	2-9/16	4-1/2	1.125	10.56
ⓈCE71C452H	4,500	100	3-1/16	4-1/2	1.250	11.88	ⓈCE71C101R	100	450	1-7/16	4-1/2	.500	5.19

Ⓢ STANDARD STOCK ITEMS

*All dimensions are in inches.

**For Type CE70 (CE71 without sleeve), deduct 3/8" from length, 1/16" from diameter and \$0.05 from net price

†Prices for larger quantities are available on request.

SANGAMO ELECTRIC COMPANY

capacitors



ELECTRONIC COMPONENTS

TYPE KR CONTINUED

Catalog Number	Military Designation	CAP. (mmf)	5% (J)	2% (G)	1% (F)
KR5E162	CM20C162	1600	\$ 0.85	\$0.94	\$1.19
KR5E182	CM20C182	1800	1.00	1.10	1.40
KR3E202	CM20C202	2000	1.10	1.21	1.54
KR3E222	CM20C222	2200	1.20	1.32	1.68
KR3E242	CM20C242	2400	1.25	1.38	1.75
KR3E252	CM20C252	2500	1.30	1.43	1.82
KR3E272	CM20C272	2700	1.40	1.54	1.96
KR3E302	CM20C302	3000*	1.50	1.65	2.10
KR1E332	CM20C332	3300**	1.60	1.75	2.24
KR1E352	CM20C352	3500**	1.75	1.92	2.45

± Minimum tolerance ± 1/2 mmf.

For ± 1/2% tolerance (above 100 mmf) double 5% list price.

* Rated voltage 300 W.V.D.C.

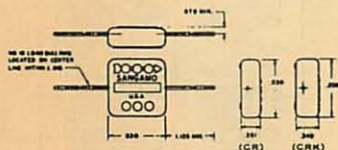
** Rated voltage 100 W.V.D.C.

Type CR

SILVER MICA

(MILITARY CM30)

Types CR and CRK silvered mica capacitors are molded in red Humiditite and are normally supplied to ±5% capacitive tolerance and characteristic "E". Characteristics C, D and F are also available on request. When the thicker case size is required in higher capacitive values, the type designation changes to CRK (example: CRK5E362). **FOR MORE COMPLETE INFORMATION WRITE FOR BULLETIN 2320.**



Catalog Number	Military Designation	CAP. (mmf)	5% (J)	2% (G)	1% (F)
CR5E511	CM30E511	510	\$0.70	\$0.81	\$0.88
CR5E561	CM30E561	560	0.75	0.86	0.95
CR5E621	CM30E621	620	0.75	0.86	0.94
CR5E681	CM30E681	680	0.80	0.92	1.00
CR5E751	CM30E751	750	0.80	0.92	1.00
CR5E821	CM30E821	820	0.85	0.98	1.06
CR5E911	CM30E911	910	0.90	1.04	1.13
CR5E102	CM30E102	1,000	1.00	1.15	1.25
CR5E112	CM30E112	1,100	1.00	1.15	1.25
CR5E122	CM30E122	1,200	1.15	1.32	1.44
CR5E132	CM30E132	1,300	1.15	1.32	1.44
CR5E152	CM30E152	1,500	1.25	1.44	1.56
CR5E162	CM30E162	1,600	1.25	1.44	1.56
CR5E182	CM30E182	1,800	1.25	1.44	1.56
CR5E202	CM30E202	2,000	1.35	1.55	1.69
CR5E222	CM30E222	2,200	1.35	1.55	1.69
CR5E242	CM30E242	2,400	1.60	1.84	2.00
CR5E252	CM30E252	2,500	1.60	1.84	2.00
CR5E272	CM30E272	2,700	1.80	2.07	2.25
CR5E302	CM30E302	3,000	1.90	2.19	2.38
CR5E332	CM30E332	3,300	1.90	2.19	2.38
CR5E362		3,600	2.00	2.30	2.50
CR5E392		3,900	2.00	2.30	2.50
CR5E432		4,300	2.10	2.42	2.63

TYPE CR CONTINUED

Catalog Number	Military Designation	Cap. (mmf)	5% (J)	2% (G)	1% (F)
CR5E472		4,700	2.10	2.42	2.63
CR5E502		5,000	2.15	2.47	2.69
CR5E512		5,100	2.15	2.47	2.69
CR5E562		5,600	2.25	2.59	2.81
CR5E622		6,200	2.40	2.76	3.00
CR3E682		6,800*	2.65	3.05	3.31
CR3E752		7,500*	2.80	3.22	3.50
CR3E802		8,000*	2.95	3.38	3.68
CR3E822		8,200*	3.00	3.45	3.75
CR3E902	CM30E902	9,000*	3.20	3.68	4.00
CR3E103		10,000*	3.50	4.03	4.38

*Rated Voltage 300 W.V.D.C.

Type CRK

SILVER MICA

(MILITARY CM35)

Catalog Number	Military Designation	CAP. (mmf)	5% (J)	2% (G)	1% (F)
CRK5E362	CM35E362	3,600	\$2.00	\$2.30	\$2.50
CRK5E392	CM35E392	3,900	2.00	2.30	2.50
CRK5E432	CM35E432	4,300	2.10	2.42	2.63
CRK5E472	CM35E472	4,700	2.10	2.42	2.63
CRK5E502	CM35E502	5,000	2.15	2.47	2.69
CRK5E512	CM35E512	5,100	2.15	2.47	2.69
CRK5E562	CM35E562	5,600	2.25	2.59	2.81
CRK5E622	CM35E622	6,200	2.40	2.76	3.00
CRK5E682	CM35E682	6,800	2.90	3.34	3.62
CRK5E752	CM35E752	7,500	3.05	3.51	3.81
CRK5E822	CM35E822	8,200	3.30	3.80	4.13
CRK5E912	CM35E912	9,100	3.50	4.03	4.38
CRK5E103	CM35E103	10,000	3.85	4.43	4.81
CRK5E123		12,000	3.90	4.49	4.88
CRK3E153		15,000*	4.80	5.52	6.00
CRK3E163		16,000*	5.10	5.87	6.38

Note: For ± 1/2% tolerance, double 5% list price.

* Rated voltage 300 W.V.D.C.

Type D15, D19, D20, D30, and D42

DIPPED SILVER MICA CAPACITORS

Sangamo Type D dipped Mica capacitors are available in five case sizes: D15, D19, D20, D30 and D42. With the exception of the Type D20 they correspond to the MIL-C-5B sizes CM05, CM06, CM07 and CM08 respectively. These units utilize silvered mica sections encased in several coatings of electrical grade phenolic and epoxy resins. All commercial units meet or exceed the applicable requirements of MIL-C-5 and are normally furnished to a capacitive tolerance of ±5% and characteristic F. **FOR MORE COMPLETE INFORMATION WRITE FOR BULLETIN 2323.**

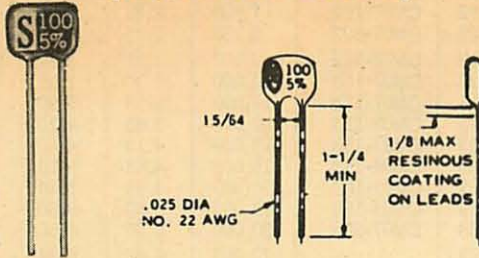
SANGAMO ELECTRIC COMPANY

capacitors



ELECTRONIC COMPONENTS

Type D15 (MILITARY CM05)



Catalog Number	Military Designation	CAP. (mmf)	5% (J)	2% (G)	1% (F)
D155C010		1 ±	\$ 0.28		
D155C020		2 ±	0.28		
D155C030		3 ±	0.28		
D155C050	CM04C050	5 ±	0.28		
D155C060	CM05C060	6 ±	0.28		
D155C070	CM05C070	7 ±	0.28		
D155C080	CM05C080	8 ±	0.28		
D155C100	CM05C100	10	0.28		
D155C120	CM05C120	12	0.28		
D155C150		15	0.28		
D155C180	CM05C180	18	0.28		
D155E200	CM05C200	20	0.28		
D155E220	CM05-220	22	0.28		
D155E240	CM05-240	24	0.28		
D155E270	CM05-270	27	0.28	\$ 0.33	
D155E300	CM05-300	30	0.28	0.33	
D155E330	CM05-330	33	0.28	0.33	
D155E360	CM05-360	36	0.28	0.33	
D155E390	CM05-390	39	0.28	0.33	
D155E430	CM05-430	43	0.28	0.33	
D155E470	CM05-470	47	0.28	0.33	
D155E500		50	0.28	0.33	\$ 0.40
D155F510	CM05-510	51	0.28	0.33	0.40
D155F560	CM05-560	56	0.28	0.33	0.40
D155F620	CM05-620	62	0.28	0.33	0.40
D155F680	CM05-680	68	0.28	0.33	0.40
D155F750	CM05-750	75	0.28	0.33	0.40
D155F820	CM05-820	82	0.28	0.33	0.40
D155F910	CM05-910	91	0.28	0.33	0.40
D155F101	CM05-101	100	0.28	0.33	0.40
D155D111	CM05-111	110	0.33	0.39	0.48
D155F121	CM05-121	120	0.33	0.39	0.48
D155F131	CM05-131	130	0.33	0.39	0.48
D155F151	CM05-151	150	0.33	0.39	0.48
D155F161	CM05-161	160	0.39	0.46	0.56
D155F181	CM05-181	180	0.39	0.46	0.56
D155F201	CM05-201	200	0.39	0.46	0.56
D155F221	CM05-221	220	0.44	0.52	0.64
D155F241	CM05-241	240	0.44	0.52	0.64
D155F251		250	0.44	0.52	0.64
D155F271	CM05-271	270	0.50	0.59	0.72
D155F301	CM05-301	300	0.50	0.59	0.72
D155F331	CM05-331	330	0.55	0.65	0.80
D155F361	CM05-361	360	0.55	0.65	0.80
D155F391	CM05-391	390	0.61	0.72	0.88
D155F431		430	0.61	0.72	0.88
D155F471		470	0.66	0.78	0.96
D155F501		500	0.66	0.78	0.96
D155F511		510	0.66	0.78	0.96
D153F561		560*	0.72	0.85	1.04
D153F621		620*	0.77	0.91	1.12
D153F681		680*	0.83	0.98	1.20
D153F751		750*	0.88	1.04	1.28
D153F821		820*	0.94	1.11	1.36
D151F911		910**	1.05	1.24	1.43
D151F102		1,000**	1.10	1.30	1.60

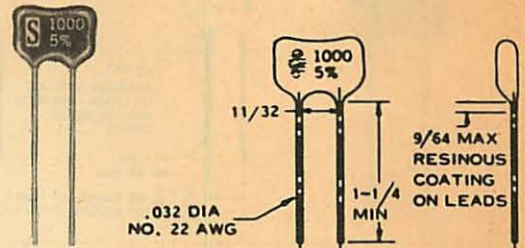
± Minimum tolerance ± 1/2 mmf.

For ± 1/2% tolerance, double 5% list price.

*Rated voltage 300 W.V.D.C.

** Rated voltage 100 W.V.D.C.

Type D19 (MILITARY CM06)



Catalog Number	Military Designation	CAP. (mmf)	5% (J)	2% (G)	1% (F)
D195F101		100	\$ 0.28	\$ 0.30	\$ 0.38
D195F111		110	0.33	0.36	0.45
D195F121		120	0.33	0.36	0.45
D195F131		130	0.33	0.36	0.45
D195F151		150	0.33	0.36	0.45
D195F161		160	0.33	0.36	0.45
D195F181		180	0.33	0.36	0.45
D195F201		200	0.33	0.36	0.45
D195F221		220	0.33	0.36	0.45
D195F241		240	0.39	0.42	0.53
D195F251		250	0.39	0.42	0.53
D195F271		270	0.44	0.48	0.60
D195F301		300	0.44	0.48	0.60
D195F331		330	0.44	0.48	0.60
D195F361		360	0.50	0.54	0.68
D195F391		390	0.50	0.54	0.68
D195F431	CM06-431	430	0.50	0.54	0.68
D195F471	CM06-471	470	0.55	0.60	0.75
D195F501		500	0.55	0.60	0.75
D195F511	CM06-511	510	0.55	0.60	0.75
D195F561	CM06-561	560	0.61	0.66	0.83
D195F621	CM06-621	620	0.61	0.66	0.83
D195F681	CM06-681	680	0.66	0.72	0.90
D195F751	CM06-751	750	0.66	0.72	0.90
D195F821	CM06-821	820	0.66	0.72	0.90
D195F911	CM06-911	910	0.72	0.78	0.98
D195F102	CM06-102	1,000	0.77	0.84	1.05
D195F112	CM06-112	1,100	0.77	0.84	1.05
D195F122	CM06-122	1,200	0.83	0.90	1.13
D195F132	CM06-132	1,300	0.88	0.96	1.20
D195F152	CM06-152	1,500	0.94	1.02	1.28
D195F162	CM06-162	1,600	0.99	1.08	1.35
D195F182	CM06-182	1,800	1.10	1.20	1.50
D195F202	CM06-202	2,000	1.21	1.32	1.65
D195F222	CM06-222	2,200	1.32	1.44	1.80
D195F242	CM06-242	2,400	1.43	1.56	1.95
D195F252		2,500	1.49	1.62	2.03
D195F272	CM06-272	2,700	1.54	1.68	2.10
D195F302		3,000	1.65	1.80	2.25
D195F332	CM06-332	3,300	1.76	1.92	2.40
D195F362	CM06-362	3,600	1.87	2.04	2.55
D195F392	CM06-392	3,900	1.98	2.16	2.70
D195F432	CM06-432	4,300	1.98	2.16	2.70
D195F472	CM06-472	4,700	2.09	2.28	2.85
D195F502		5,000	2.20	2.40	3.00
D195F512		5,100	2.20	2.40	3.00
D193F562		5,600*	2.31	2.52	3.15
D193F622		6,200*	2.42	2.64	3.30
D193F682		6,800*	2.53	2.76	3.45
D191F752		7,500**	2.42	2.64	3.30
D191F822		8,200**	2.75	3.00	3.75

Note: Minimum tolerance ± 1/2 mmf.

For ± 1/2% tolerance, double 5% list price.

*Rated voltage 300 W.V.D.C.

** Rated voltage 100 W.V.D.C.

SANGAMO ELECTRIC COMPANY

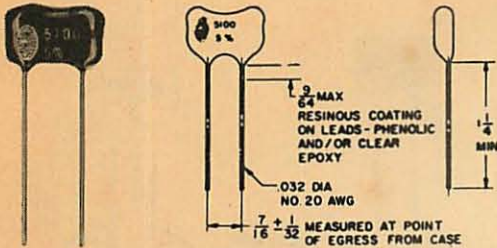
capacitors



ELECTRONIC COMPONENTS

Type D20

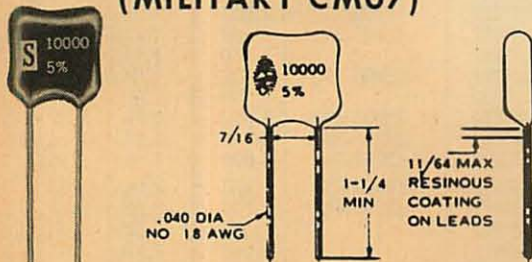
(NON MILITARY)



Catalog Number	CAP. (mmf)	5% (J)	2% (G)	1% (F)
D205F681	680	\$0.55	\$0.60	\$0.75
D205F751	750	0.55	0.60	0.75
D205F821	820	0.55	0.60	0.75
D205F911	910	0.61	0.66	0.83
D205F102	1,000	0.66	0.72	0.90
D205F112	1,100	0.66	0.72	0.90
D205F122	1,200	0.72	0.88	0.98
D205F132	1,300	0.77	0.84	1.05
D205F152	1,500	0.83	0.90	1.13
D205F162	1,600	0.88	0.96	1.20
D205F182	1,800	0.99	1.08	1.35
D205F202	2,000	1.05	1.14	1.43
D205F222	2,200	1.16	1.26	1.58
D205F242	2,400	1.21	1.32	1.65
D205F252	2,500	1.21	1.32	1.65
D205F272	2,700	1.32	1.44	1.80
D205F302	3,000	1.43	1.56	1.95
D205F332	3,300	1.54	1.68	2.10
D205F362	3,600	1.65	1.80	2.25
D205F392	3,900	1.76	1.92	2.40
D205F432	4,300	1.87	2.04	2.55
D205F472	4,700	1.78	2.16	2.70
D205F502	5,000	2.09	2.28	2.85
D205F512	5,100	2.15	2.34	2.93
D205F562	5,600	2.20	2.40	3.00
D205F622	6,200	2.20	2.40	3.00
D205F682	6,800	2.31	2.52	3.15
D205F752	7,500	2.42	2.64	3.30
D205F822	8,200	2.64	2.88	3.60
D205F912	9,100	2.97	3.24	4.05
D205F103	10,000	3.30	3.60	4.50

Type D30

(MILITARY CM07)



Catalog Number	Military Designation	CAP. (mmf)	5% (J)	2% (G)	1% (F)
D305F432		4,300	\$1.76	\$1.92	\$2.08
D305F472		4,700	1.87	2.04	2.21
D305F502		5,000	1.93	2.10	2.28
D305F512	CM07-512	5,100	1.93	2.10	2.28
D305F562	CM07-562	5,600	1.98	2.16	2.34
D305F622	CM07-622	6,200	2.09	2.28	2.47

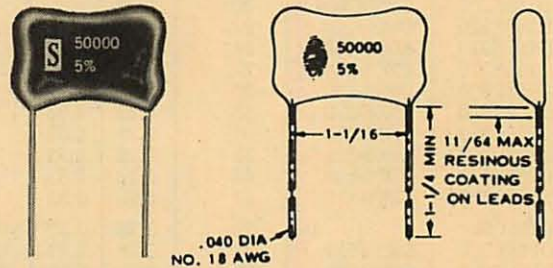
TYPE D30 CONTINUED

Catalog Number	Military Designation	CAP. (mmf)	5% (J)	2% (G)	1% (F)
D305F682	CM07-682	6,800	\$2.31	\$2.52	\$2.73
D305F752	CM07-752	7,500	2.53	2.76	2.99
D305F822	CM07-822	8,200	2.75	3.00	3.25
D305F912	CM07-912	9,100	2.97	3.24	3.51
D305F103	CM07-103	10,000	3.30	3.60	3.90
D305F113	CM07-113	11,000	3.58	3.90	4.23
D305F123	CM07-123	12,000	3.85	4.20	4.55
D305F133	CM07-133	13,000	4.13	4.50	4.88
D305F153	CM07-153	15,000	4.68	5.10	5.53
D305F163	CM07-163	16,000	4.95	5.40	5.85
D305F183	CM07-183	18,000	5.50	6.00	6.50
D305F203	CM07-203	20,000	6.05	6.60	7.15
D305F223		22,000	6.27	6.84	7.41
D303F243		24,000*	6.77	7.38	8.00
D303F253		25,000*	7.04	7.68	8.32
D303F273		27,000*	7.54	8.22	8.91
D303F303		30,000*	8.25	9.00	9.75
D301F333		33,000**	9.08	9.90	10.73
D301F363		36,000**	9.90	10.80	11.70
D301F403		40,000**	10.98	12.11	13.05

Note: For $\pm 1/2\%$ tolerance, double 5% list price.

*Rated voltage 300 WVDC.

**Rated voltage 100 WVDC.

Type D42
(MILITARY CM08)

Catalog Number	Military Designation	CAP. (mmf)	5% (J)	2% (G)	1% (F)
D425F103		10,000	\$3.30	\$3.80	\$4.13
D425F123		12,000	3.90	4.49	4.85
D425F133		13,000	4.20	4.83	5.25
D425F153		15,000	4.80	5.52	6.00
D425F163		16,000	5.10	5.87	6.38
D425F183		18,000	5.70	6.56	7.13
D425F203		20,000	6.30	7.25	7.88
D425F223	CM08-223	22,000	6.90	7.94	8.63
D425F243	CM08-243	24,000	7.50	8.63	9.38
D425F253		25,000	7.80	8.97	9.75
D425F273	CM08-273	27,000	\$8.40	\$9.66	10.50
D425F303	CM08-303	30,000	9.30	10.70	11.63
D425F333	CM08-333	33,000	10.20	11.73	12.75
D425F363	CM08-363	36,000	11.10	12.77	13.88
D425F393	CM08-393	39,000	12.00	13.80	15.00
D425F433	CM08-433	43,000	13.00	14.95	16.25
D425F473	CM08-473	47,000	14.01	16.10	17.50
D423F473		47,000*	11.00	12.65	13.75
D425F503		50,000	14.70	17.02	18.55
D423F503		50,000*	12.80	14.72	16.00
D425F513		51,000	15.10	17.30	18.88
D423F513	CM08-423	51,000*	13.10	15.07	16.38
D423F563	CM08-563	56,000*	14.20	16.33	17.75
D423F623	CM08-623	62,000*	15.60	17.94	19.50
D423F683		68,000*	17.00	19.55	21.25
D421F753		75,000**	18.70	21.51	23.38
D421F823		82,000**	20.40	23.46	25.50
D421F913		91,000**	22.44	25.81	28.05

Note: For $\pm 1/2\%$ tolerance, double 5% list price.

*Rated voltage 300 W.V.D.C.

**Rated voltage 100 W.V.D.C.

SANGAMO ELECTRIC COMPANY

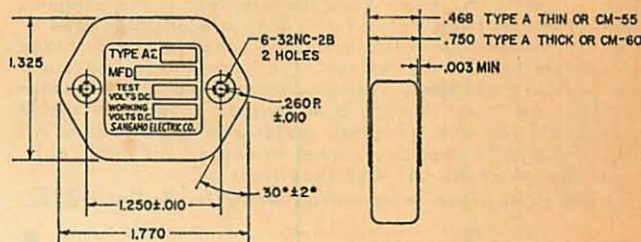
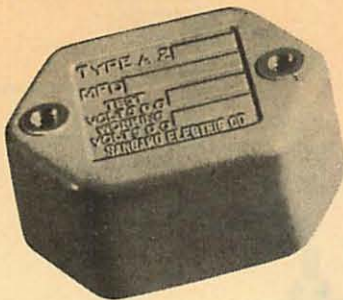
capacitors



ELECTRONIC COMPONENTS

Type A MICA CAPACITORS

The Type A mica dielectric capacitor is molded in Thermosetting Plastic case with threaded insert terminals. Unless otherwise specified, units are supplied in $\pm 10\%$ capacitive tolerance and "B" characteristic per MIL-C-5. For more complete information write for Bulletin 2321.



Catalog Number	Military Type Designation	Cap. (Mfd)	Rated Volts d-c	Net Price 1-9*
A-1450		.00005	600	\$ 0.63
A-1310		.0001	600	0.63
A-1210		.001	600	0.63
A-1110		.01	600	1.22
A-1115		.015	600	1.32
A-1118	CM55B183K	.018	600	1.47
A-1120	CM55B203K	.02	600	1.55
A-1122	CM55B223K	.022	600	1.68
A-1125		.025	600	1.89
A-1127	CM55B273K	.027	600	1.93
A-1130	CM55B303K	.03	600	1.97
A-1133	CM55B333K	.033	600	2.13
A-1140		.04	600	2.54
A-1150		.05	600	3.09
A-1170		.07	600	4.00
A-2210		.001	1200	0.834
A-2215		.0015	1200	0.938
A-2268	CM55B682K	.0068	1200	1.61
A-2110	CM55B103K	.01	1200	2.05

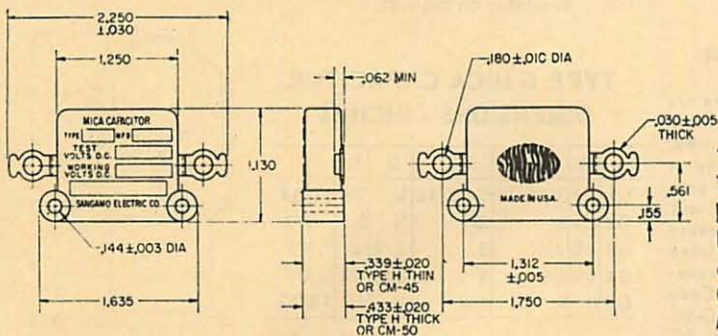
Catalog Number	Military Type Designation	Cap. (Mfd)	Rated Volts d-c	Net Price 1-9*
A-2120	CM60B203K	.02	1200	\$ 3.07
A-2122	CM60B223K	.022	1200	3.25
A-2127	CM60B273K	.027	1200	3.47
A-2133	CM60B333K	.033	1200	3.57
A-5451	CM55B510K	.000051	2500	0.834
A-5310	CM55B101K	.0001	2500	0.834
A-5315	CM55B151K	.00015	2500	0.834
A-5320	CM55B201K	.0002	2500	0.834
A-5347	CM55B471K	.00047	2500	1.08
A-5210	CM55B102K	.001	2500	1.28
A-5220	CM55B202K	.002	2500	1.74
A-5230	CM55B302K	.003	2500	2.21
A-5240		.004	2500	2.46
A-5250		.005	2500	2.70
A-5280		.008	2500	2.98
A-5110	CM60B103K	.01	2500	3.16
A-5116	CM60B163K	.016	2500	3.59

*Prices for larger quantities are available on request.

Note: Prices for closer tolerances and other characteristics are available on request.

S STANDARD STOCK ITEMS

Type H MICA CAPACITORS



The Type H mica dielectric capacitor is molded in a Thermosetting Plastic case with lug terminals. It can be screw mounted through untapped holes in the case. Unless otherwise specified, units are supplied in $\pm 10\%$ capacitive tolerance and "B" characteristic per MIL-C-5. FOR MORE COMPLETE INFORMATION WRITE FOR BULLETIN 2321.

Catalog Number	Military Type Designation	Cap. (Mfd)	Rated Volts d-c	Net Price 1-9*
H-1450		.00005	600	\$ 0.52
H-1310		.0001	600	0.52
H-1210		.001	600	0.52
H-1220		.002	600	0.56
H-1250		.005	600	0.67
H-1110		.01	600	0.94
H-1115	CM50B153K	.015	600	1.16
H-1115	CM50B203K	.02	600	1.33
H-1120	CM50B273K	.027	600	1.72
H-2450		.00005	1200	0.69
H-2210		.001	1200	0.77
H-2220		.002	1200	1.05
H-2247		.0047	1200	1.41
H-2268	CM50B682K	.0068	1200	1.53
H-2291	CM50B912K	.0091	1200	1.82
H-2210	CM50B103K	.01	1200	2.22
H-5447	CM45B470K	.000047	2500	0.83

Catalog Number	Military Type Designation	Cap. (Mfd)	Rated Volts d-c	Net Price 1-9*
H-5468	CM45B680K	.000068	2500	\$ 0.83
H-5310	CM45B101K	.0001	2500	0.83
H-5320	CM45B201K	.0002	2500	0.83
H-5347	CM45B471K	.00047	2500	0.98
H-5351	CM45B511K	.00051	2500	1.06
H-5210	CM45B102K	.001	2500	1.22
H-5218	CM45B182K	.0018	2500	1.70
H-5230	CM50B302K	.003	2500	2.13
H-5240		.004	2500	2.45
H-5247	CM50B472K	.0047	2500	2.66
H-5251	CM50B512K	.0051	2500	2.82

*Price for larger quantities are available on request.

Note: For meter mounting bracket add letter "E" to type designation. (Example HE-1450) Also add \$0.12 net ea. to above prices.

Note: Prices for closer tolerances and other characteristics are available on request.

S STANDARD STOCK ITEMS

SANGAMO ELECTRIC COMPANY

capacitors



ELECTRONIC COMPONENTS

CP40-41 PAPER



STYLE CP40

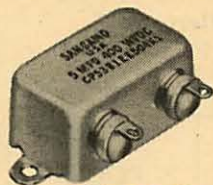


STYLE CP41

Style CP40 and CP41 cases are non-magnetic material and are uninsulated. They meet the physical, electrical and environmental specifications of MIL-C-25. The style CP40 is supplied with one ground lug, two insulating washers, one lockwasher and one mounting nut. It is available in the B or C type terminal. Units having C terminals are supplied with two nuts, one lockwasher and one terminal lug and are capable of accommodating a number 14 AWG bare wire. The style CP41 is supplied with one mounting nut and one lockwasher and is furnished in the B type terminal only.

For complete information, including listings and circuit diagrams, write for Bulletin 2423.

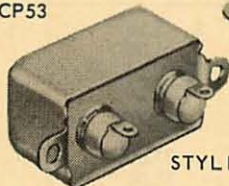
CP53-CP54-CP55 PAPER



STYLE CP53



STYLE CP54



STYLE CP55

Style CP53, CP54 and CP55 cases are drawn metal and are uninsulated. They meet the physical, electrical and environmental specifications of MIL-C-25 and are available in B terminal only. These capacitors are available in circuits 1,2,4,5 and 6 as specified in MIL-C-25. The three style capacitors differ only in the location of terminals. The style CP53 has terminals on the side, the style CP54 on the top and the style CP55 on the bottom.

For complete information, including listings, write for Bulletin 2423.

CP91-CP63-CP-65-CP67-CP69 PAPER



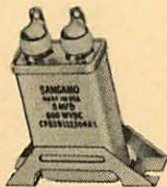
STYLE CP91



STYLE CP65



STYLE CP69



STYLE CP63



STYLE CP67

Style CP91, CP63, CP65, CP67 and CP69 cases are drawn metal and are uninsulated. They meet the physical, electrical and environmental specifications of MIL-C-25 and are available in B terminal. Circuits 1, 2 and 6 can be supplied in all styles, while circuit 5 is only furnished in styles CP67 and CP69. With the exception of style CP91, brackets as illustrated are included with capacitors. Style CP91 is normally furnished without brackets, unless a choice of spade-lug or footed brackets is indicated.

For more complete information, including listings, write for Bulletin 2423.

CP72 PAPER



Style CP72 cases are drawn metal. They meet the physical, electrical, and environmental specifications of MIL-C-25 and are available with B, D or E terminals. Capacitors having D or E terminals are supplied with two nuts and one lockwasher. Those rated at 3000 volts or less are supplied with a solder lug capable of accommodating a number 14 AWG wire for each terminal. Spade lug or footed brackets are not furnished unless requested.

For more complete information, including listings, write for Bulletin 2423.

SANGAMO ELECTRIC COMPANY

capacitors



ELECTRONIC COMPONENTS

Type HVC HIGH VOLTAGE PAPER CAPACITORS



Sangamo Type HVC High Voltage capacitors are impregnated with a halogenated hydrocarbon called Diaclor B. This oil provides the desirable electrical performance characteristics for the most severe applications. They are sealed in shock and vibration resistant drawn rectangular or cold-rolled steel cases. The absence of solder seams eliminates oil leakage and contamination from solder flux. A wide variety of capacitance ranges are available in voltage ratings up to 50,000 volts d-c. Spade, footed or wraparound brackets are optional at extra cost, but will not be furnished unless requested. When choice of brackets is not indicated, spade type will be supplied.

For more complete information write for Bulletin 2425.

CATALOG NUMBER	CAP. (MFD)	RATED VOLTS D-C	CASE DIMENSIONS (INCHES)			NET PRICE 1-9*	BRACKET PRICE PER PR.
			LENGTH	WIDTH	HEIGHT		
702012-0201	1	600	1-13/16	1-1/16	2-5/8	\$ 2.16	\$ 0.15
702012-2001	6	600	2-1/2	1-3/16	3-3/4	4.00	0.15
702012-5401	20	600	3-3/4	2-1/4	4-1/2	9.20	0.25
702012-6901	35	600	3-3/4	3-3/16	5-1/8	13.80	0.55
702012-7501	45	600	4-9/16	3-3/4	4-3/8	18.00	0.55
702012-8404	60	600	4-9/16	3-3/4	6	24.20	0.55
702012-8905	75	600	4-9/16	3-3/4	7-1/2	27.60	0.55
702012-9401	100	600	4-9/16	3-3/4	9-1/2	35.00	0.55
702012-1001	2	1000	1-13/16	1-1/16	3-7/8	3.10	0.78
702012-3303	8	1000	3-3/4	1-1/4	4-5/8	6.40	1.44
702012-7503	30	1000	4-9/16	3-3/4	4-3/8	18.40	0.55
702012-8401	45	1000	4-9/16	3-3/4	6	26.80	0.55
702012-9006	60	1000	4-9/16	3-3/4	8	32.50	0.55
702012-0801	1	1500	1-13/16	1-1/16	3-1/4	2.70	0.15
702012-6601	10	1500	3-3/4	3-3/16	4-1/8	11.40	0.55
702012-9001	40	1500	4-9/16	3-3/4	8	31.20	0.55
702012-0107	.1	2000	1-13/16	1-1/16	1-5/8	3.30	0.15
702012-1701	1.0	2000	2-1/4	1-3/16	3-1/4	4.40	0.15
702012-2901	2.0	2000	3-3/4	1-1/4	3-3/4	5.50	0.15
702012-8901	20.0	2000	4-9/16	3-3/4	7-1/2	25.50	0.55
702012-1603	.5	2500	2-1/2	1-3/16	2-7/8	5.20	0.15
702012-9201	15.0	2500	4-9/16	3-3/4	9-1/8	29.00	0.55
702012-1301	.1	3000	2-1/2	1-3/16	2	5.10	1.02
702012-3203	1.0	3000	3-3/4	1-1/4	4-1/4	7.40	0.15
702012-7905	5.0	3000	4-9/16	3-3/4	5	17.30	0.55
702012-9101	10.0	3000	4-9/16	3-3/4	8-1/2	28.60	0.55
702012-1402	.1	4000	2-1/2	1-3/16	2-1/2	6.20	0.15
702012-4203	1.0	4000	3-3/4	1-3/4	4-1/2	9.70	0.25
702012-9102	8.0	4000	4-9/16	3-3/4	8-1/2	28.00	0.55
702012-2704	.25	5000	3-3/4	1-1/4	3-1/4	6.84	0.15
702012-8202	3.0	5000	4-9/16	3-3/4	5-1/2	19.00	0.55
702012-9303	6.0	5000	4-9/16	3-3/4	9-1/4	18.40	0.55
702012-3701	.1	6000	3-3/4	1-3/4	2	10.10	0.25
702012-5501	.5	6000	3-3/4	2-1/4	4-5/8	12.50	0.25
702012-9103	3.0	6000	4-9/16	3-3/4	8-1/2	28.00	0.55
702012-3703	.1	7500	3-3/4	1-3/4	3-1/4	10.50	0.25
702012-8003	1.0	7500	4-9/16	3-3/4	5-1/8	19.90	0.55
702012-6704	.25	10,000	3-3/4	3-3/16	4-1/2	16.10	0.55
702012-8904	1.0	10,000	4-9/16	3-3/4	7-1/2	27.00	0.55

*Prices for larger quantities available on request.
Note: Standard capacitive tolerance $\pm 10\%$