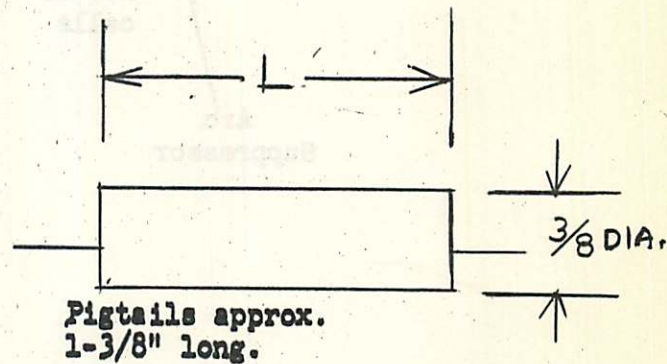


RADIO RECEPTOR COMPANY, INC.
 Subsidiary of General Instrument Corp.
 240 Wythe Avenue
 Brooklyn, 11, N. Y.
 EV 8-6000

RECTIFIERS FOR CONTACT PROTECTION

AC CONTACT PROTECTOR RATINGS

Coil Voltage		Coil Current	Code No.	L Dimension
Max.	Min.	Max. Ma.		
26	15	100	AS2X1	5/8 in.
52	27	200	AS4X2	3/4 in.
78	53	200	AS6X3	3/4 in.
104	79	200	AS8X4	15/16 in.
130	105	200	AS10X5	15/16 in.

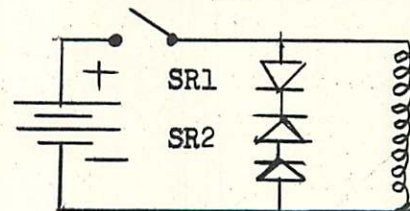


DC CONTACT PROTECTOR RATINGS

Coil Voltage		Coil Current	Code No.	L Dimension
Max.	Min.	Max. Ma.		
22	15	100	AS2X1	5/8 in.
44	23	200	AS3X2	3/4 in.
66	45	250	AS5X3	3/4 in.
88	67	250	AS6X4	3/4 in.
110	89	250	AS7X5	15/16 in.
132	111	250	AS8X6	15/16 in.
154	133	250	AS9X7	15/16 in.

Note: DC Contact Protectors will be color coded with a red dot, which indicates this end to be connected to positive (+) side of coil.

 Typical Application



SR1 Suppressive Section
 SR2 Blocking Section

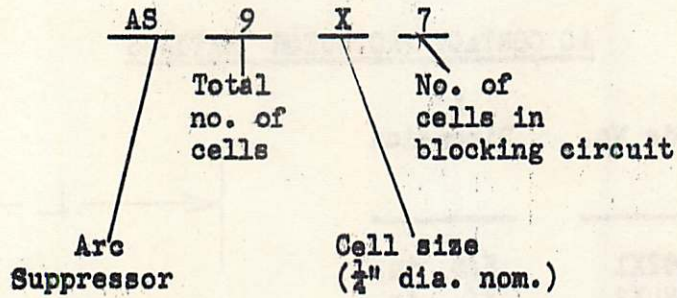
Ratings are based upon operation in a 35°C ambient with relays operating up to 40 times per second.

Other types to be announced shortly.

CONTACT PROTECTORS

CODING SYSTEM

Typical Code No. AS9X7



Bulletin #277
March 5, 1959

RADIO RECEIVER COMPANY, INC.
 Subsidiary of General Instrument Corp.
 240 Wythe Avenue
 Brooklyn, 11, N. Y.
 EV 8-6000

RADIO RECEIVER 5 MA CARTRIDGE RECTIFIERS

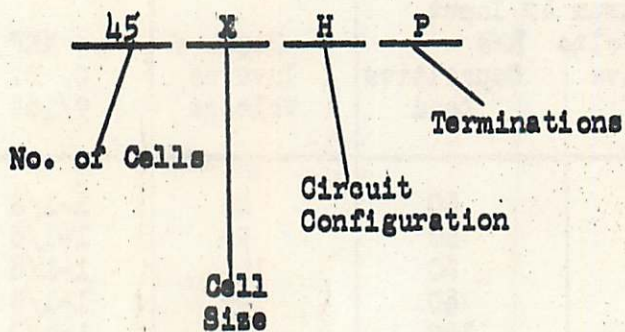
Ratings are based on operation in a maximum ambient temperature of 35°C

No. of Cells	Maximum AC Input Volts RMS Resistive Load	Maximum AC Input Capacitive Load	Peak Inverse Voltage	- XHP O. D. 9/16"	- XHP O. D. 3/8"
1	33	20	48	1-1/8	1/2
2	66	40	96	1-1/8	9/16
3	99	60	144	1-1/8	5/8
4	132	80	192	1-1/8	5/8
5	165	100	240	1-1/8	5/8
10	330	200	480	1-1/8	7/8
15	495	300	720	1-1/8	1-1/8
20	660	400	960	1-1/8	1-1/4
25	825	500	1200	1-1/4	1-1/2
30	990	600	1440	1-3/8	1-1/2
40	1320	800	1920	1-3/4	1-7/8
45	1485	900	2160	2-5/16	2-5/16
50	1650	1000	2400	2-5/16	2-5/16
60	1980	1200	2880	2-1/2	2-1/2
75	2475	1500	3600	2-1/2	2-1/2
100	3300	2000	4800	3	3-1/8
125	4125	2500	6000	4	4-1/8
150	4950	3000	7200	4	4-3/4
175	5775	3500	8400	5-1/2	5-1/2
190	6270	3800	9120	6	6-1/4
210	6930	4200	10080	7	--
230	7590	4600	11040	7-1/2	--
250	8250	5000	12000	8-1/4	--
				9	--

33 VOLT CELL CARTRIDGE LINE

TENTATIVE CODING SCHEME

Typical Code No. 45XHP



<u>Cell Size</u>	<u>Circuit Configuration</u>	<u>Terminations</u>
X 1/4 D	H - Half Wave	P - Pigtail Leads F - Fuse Type Ferrules