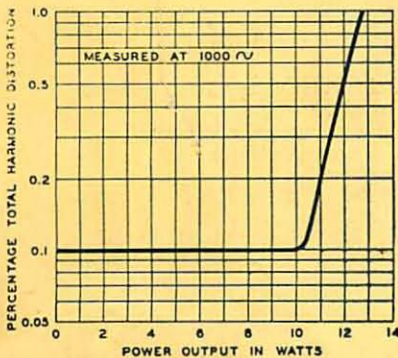
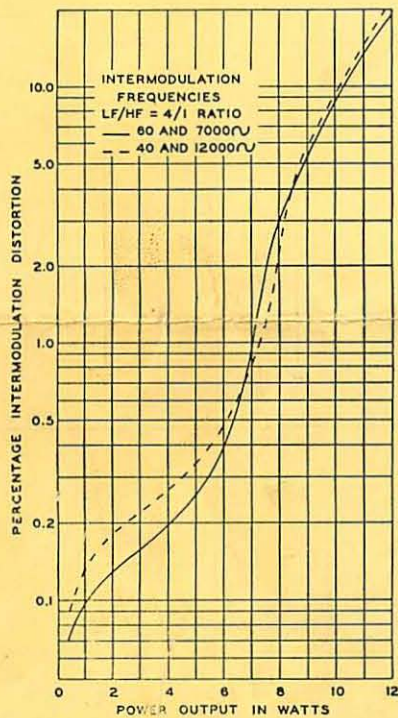
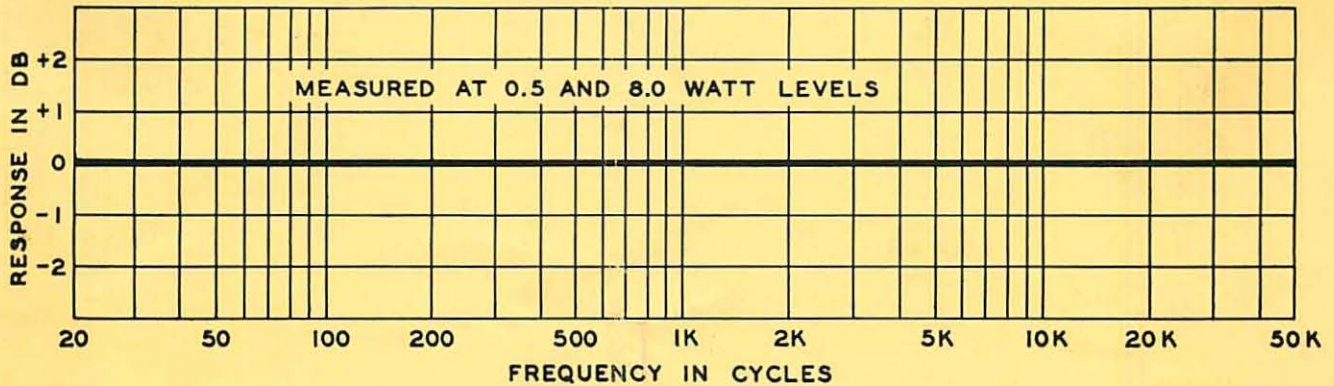


STANCOR TRANSFORMERS

in the

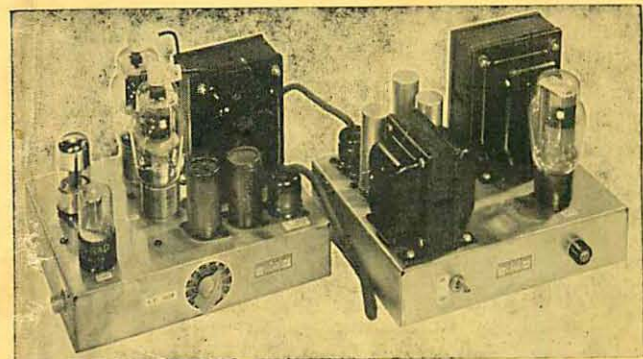
WILLIAMSON HIGH FIDELITY AMPLIFIER



The full potentialities of the famous Williamson Amplifier are realized with Stancor components, making available superb audio quality at low cost. The Stancor high fidelity output transformer A-8054 (\$10.86), power transformer PC8412 (\$7.95) and filter choke C-1411 (\$3.90) have a total net price of only \$22.71.

Note that the excellent frequency response curve recorded at the 8 watt level remains unchanged at the low level of 0.5 watts, a factor frequently overlooked in amplifier evaluation.

Intermodulation distortion measures only 3% at 8 watts output. Total harmonic distortion, at 1000 cycles, is extremely low and may be considered non-existent below the 10 watt power level.

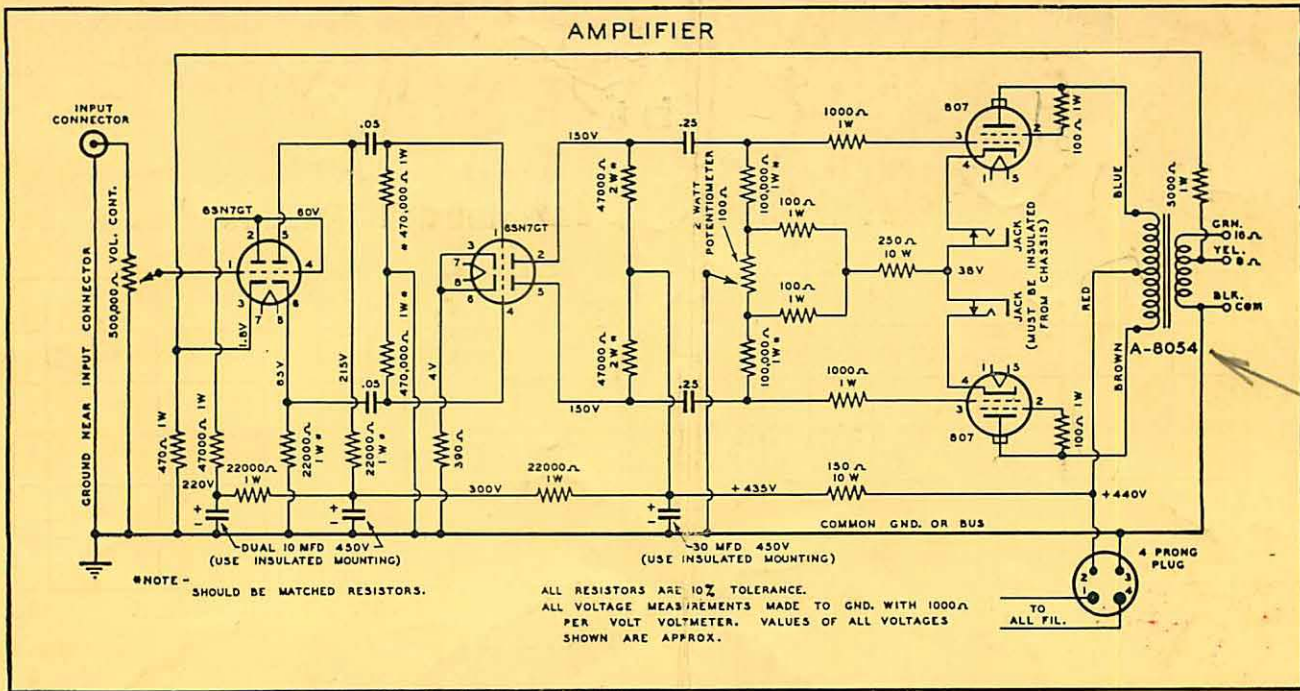


DISTRIBUTED BY

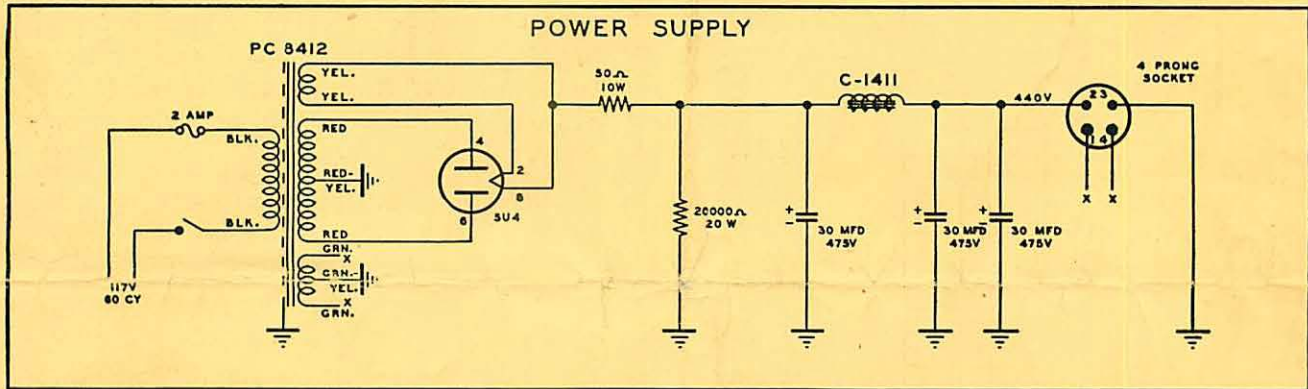
HARRISON RADIO CORP.
225 GREENWICH STREET
NEW YORK 7, N. Y.

STANDARD TRANSFORMER CORPORATION

3580 Elston Avenue, Chicago 18, Illinois



9000



PARTS LIST

AMPLIFIER

- 1 OUTPUT TRANSFORMER, STANCOR #A-8054
- 1 Chassis 9" x 7" x 2"
- 2 470,000 ohm 1 watt 10% resistor
- 2 100,000 ohm 1 watt 10% resistor
- 1 47,000 ohm 1 watt 10% resistor
- 2 47,000 ohm 2 watt 10% resistor
- 4 22,000 ohm 1 watt 10% resistor
- 1 5,000 ohm 1 watt 10% resistor
- 2 1,000 ohm 1 watt 10% resistor
- 1 470 ohm 1 watt 10% resistor
- 1 390 ohm 1 watt 10% resistor
- 4 100 ohm 1 watt 10% resistor
- 1 150 ohm 10 watt wire wound resistor
- 1 250 ohm 10 watt wire wound resistor
- 1 500,000 ohm potentiometer volume control, audio taper
- 1 100 ohm 2 watt potentiometer
- 1 30 Mfd. 475 W.V. electrolytic capacitor, Sprague #TVL-1810 or equiv. (insulated from chassis)
- 1 Dual 10 Mfd. 450 W.V. electrolytic capacitor, Sprague #TVL-2750 or equiv. (insulated from chassis)
- 2 .25 Mfd. 600 W.V. tubular capacitor, Aerovox Type #82 Aerolite or equiv.
- 2 .05 Mfd. 600 W.V. tubular capacitor
- 1 Input connector, Amphenol #75-PC1M
- 1 Power plug, 4 prong, Amphenol #86-CP4
- 2 Octal tube sockets, Amphenol #78-S8
- 2 5 prong tube sockets, Amphenol #78-S5

- 2 Closed circuit jacks, Mallory #A-2 or equiv. (must be insulated from chassis)
- 2 Plate caps, Millen #36002
- 1 Output terminal strip, three terminals
- 6 Terminal tie lug strips, two lug type

POWER SUPPLY

- 1 POWER TRANSFORMER, STANCOR #PC8412
- 1 FILTER CHOKE, STANCOR #C-1411
- 1 Chassis 9" x 7" x 2"
- 3 30 Mfd. 475 W.V. electrolytic capacitor, Sprague #TVL-1810 or equiv.
- 1 20,000 ohm 20 watt wire wound resistor
- 1 50 ohm 10 watt wire wound resistor
- 1 8 prong socket, Amphenol #78-S8
- 1 4 prong socket, Amphenol #77-MIP-4
- 1 Single pole single throw toggle switch
- 1 Fuse extractor post, Littelfuse #341001
- 1 2 amp fuse, type 3AG
- 1 Line cord and plug

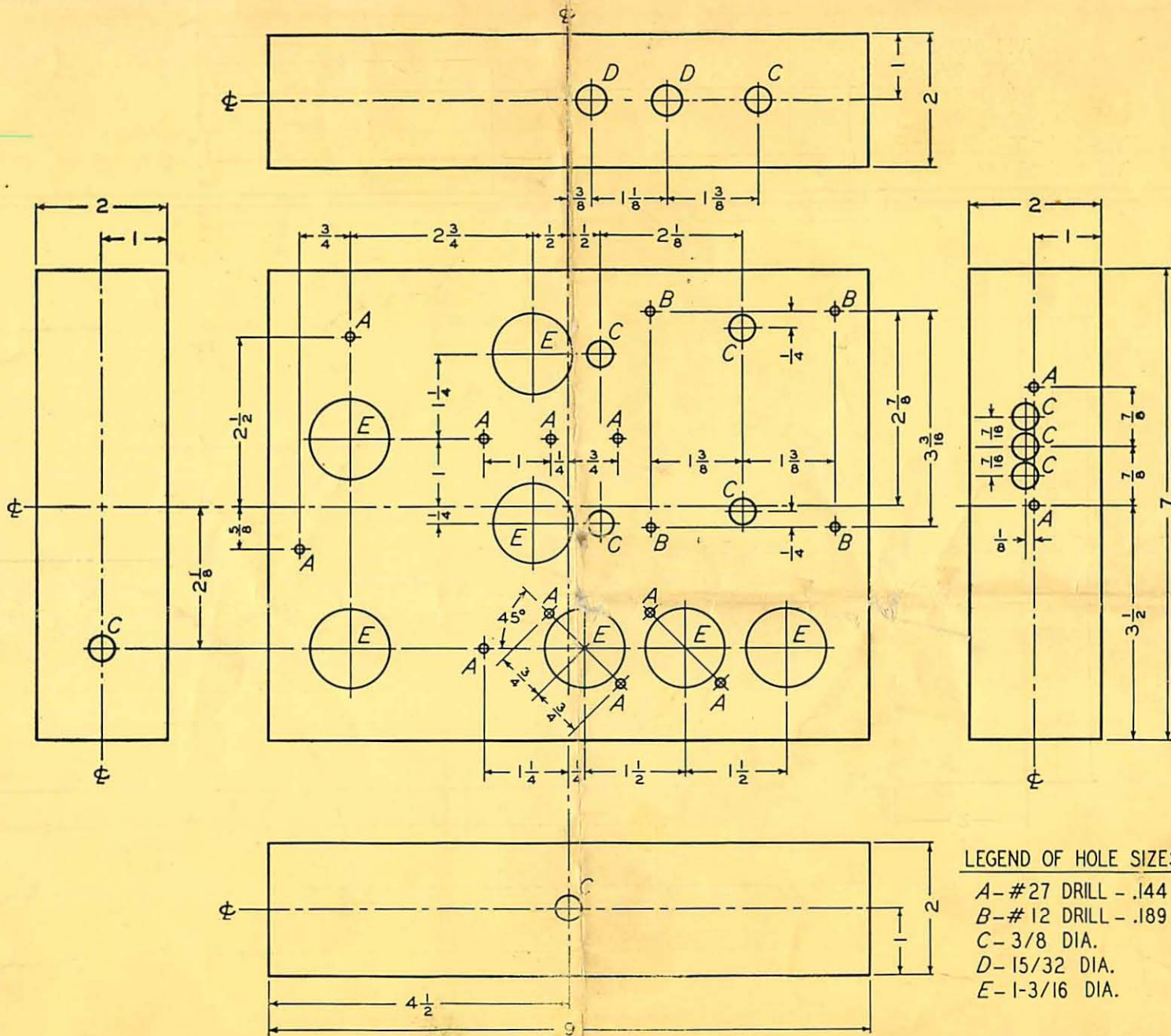
POWER CABLE

- 1 Female connector, Amphenol #78-PF4
- 1 Male connector, Amphenol #86-PM4
- 1 4-wire cable, length as required

TR 3-2900
C174907

WILLIAMSON HIGH FIDELITY AMPLIFIER

AMPLIFIER CHASSIS DRAWING



**IT'S EASIER TO BUILD THE
WILLIAMSON AMPLIFIER
WHEN YOU USE
STANCOR
PREFABRICATED CHASSIS WM-8**

Completely punched as required for the Williamson Amplifier and Power Supply as described in Stancor Bulletin 382. Attractively finished in metallic neutral-tone enamel.

WM-8 (Set of two chassis).....\$5.75 Net.

IT'S EASIER TO BUILD THE
WILLIAMSON AMPLIFIER
WHEN YOU USE
STANCO
PREPARED CHASSIS WARE
completely punched as required for the
standard amplifier and power supply as
shown in Stanco Bulletin 303. Alternatively
it can be made in a wide variety of sizes
and styles of two chassis. 25.75 net.