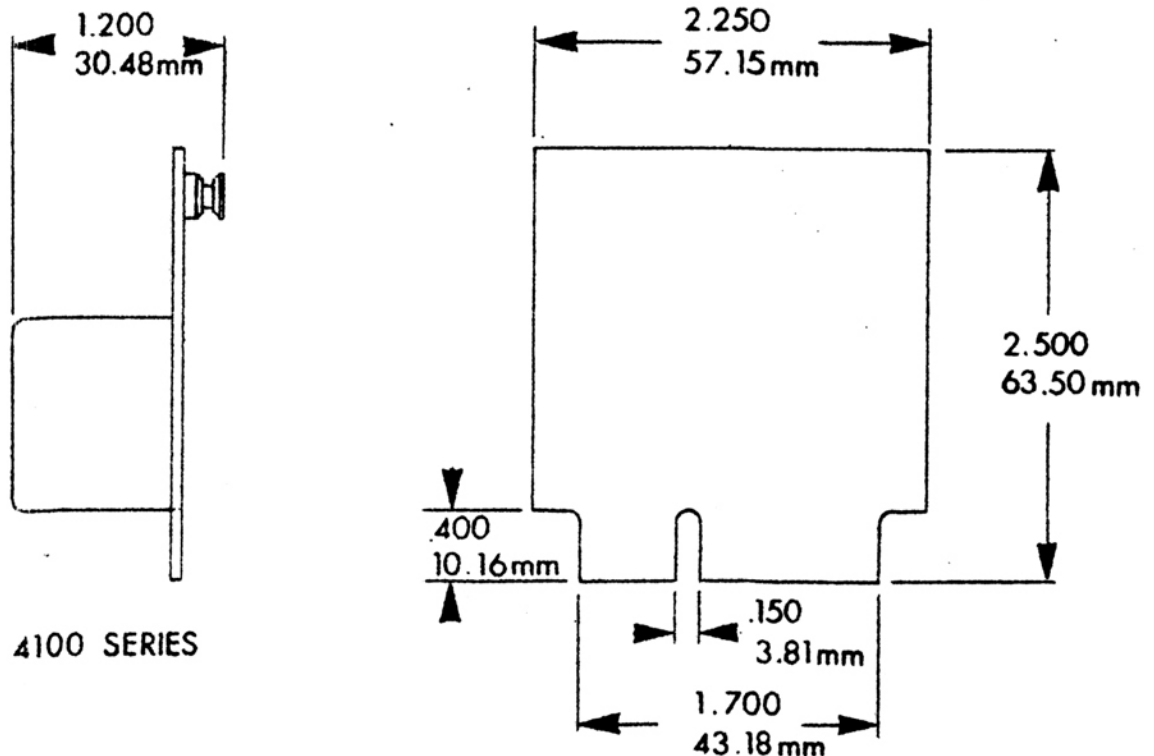


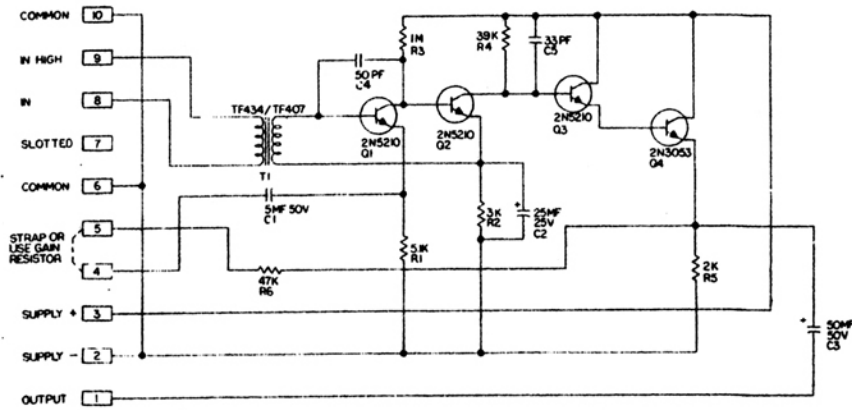
THE AM4103 PRE-AMPLIFIER IS PRIMARILY INTENDED FOR USE AS A MICROPHONE PRE-AMPLIFIER IN THE 4000 SERIES SYSTEM. IT MAY BE USED AS AN INDIVIDUAL MODULE IN OTHER ASSEMBLIES IF THE INPUT AND OUTPUT PARAMETERS SERVE THE REQUIRED PURPOSE.

GENERAL DESCRIPTION

The AM4103 Pre-Amplifier is designed for microphone pre-amplification into a system load of 600 ohms. It is constructed on a plug-in printed circuit card and does not contain controls or adjustments.

The AM4103 is made available with two different input transformers. The "A" version is provided with a good quality microphone input transformer with performance characteristics sufficient for most applications. If a better frequency response and improved low frequency distortion is required, the AM4103B with the high quality input transformer should be used.





ELECTRICAL SPECIFICATIONS

SOURCE IMPEDANCE:

250 ohms nominal

GAIN:

Max 60 db

Change of feedback resistor changes gain:

180K ohms	60 db gain
150K ohms	59 db gain
100K ohms	56 db gain
51K ohms	53 db gain
20K ohms	50 db gain
0 (strap)	47 db gain (mir)

FREQUENCY RESPONSE:

± 1 db 30 hz to 15 Khz

LOAD IMPEDANCE:

600 ohms or more

OUTPUT MAX:

+ 14 dbm/600 ohms

HARMONIC GENERATION:

Less than .1% at 1 Khz

POWER REQUIREMENTS:

42 volts dc/36 ma

SIZE:

2- $\frac{1}{4}$ " wide X 2- $\frac{1}{2}$ " long

MATING CONNECTOR:

Cinch 252-10-30-24D

MOUNTING:

The AM 4103 type amplifier may be mounted in TRY-4000 or MG 91.