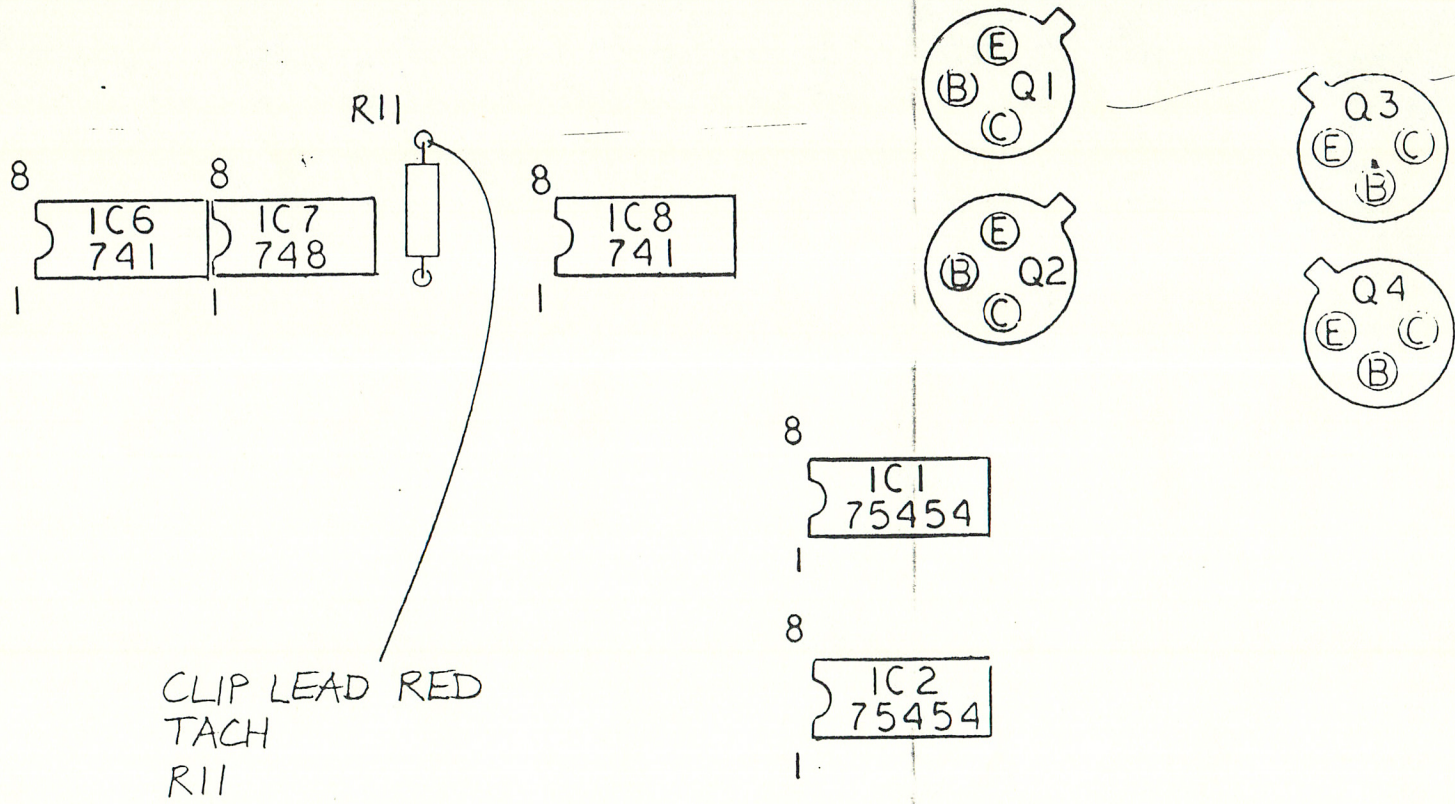


CLIP LEAD YELLOW  
DIR  
R49

MCI  
ANALOG TORQUE PCB  
26 D 1

\*PCB LAYOUT DRAWN BY MCI

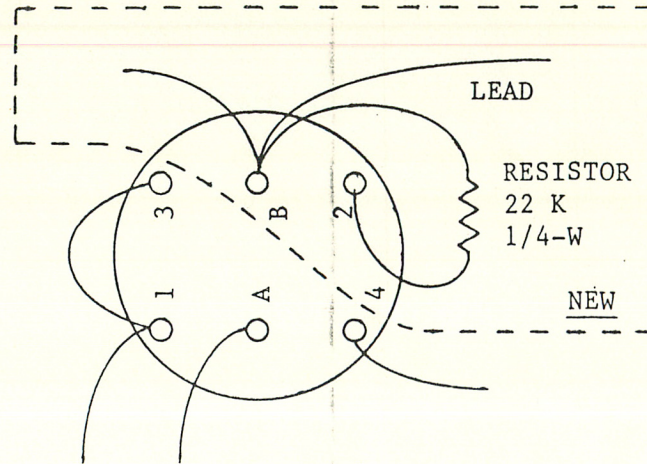
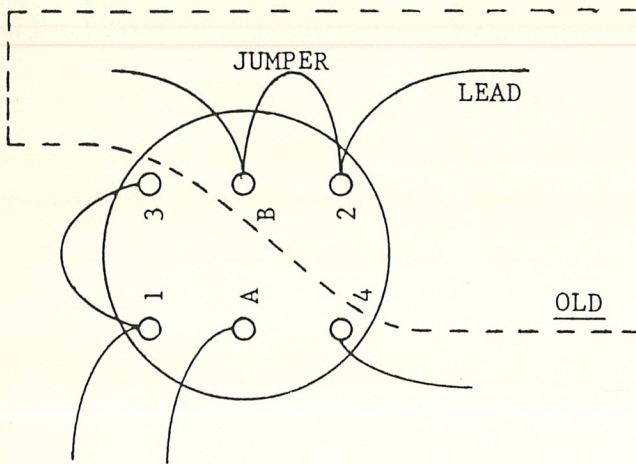
The BTX Corporation 12 Huron Drive, Natick, Massachusetts 01760		
DATE 14 SEP 81	DRAWN BY DJB *	APPROVED BY [Signature]
SCALE 1x	REVISED 31 MAR 82	P/N 05-4700-3208
SUBASSY CABLE SLAVE SHADOW TO MCI JH-110 CLIP LEAD DIR		DRAWING NUMBER 59-4700-3208 P. 2 of 3
		REV 0



MCI  
INTERFACE/LAMP DRIVER PCB  
25 D 204

\* PCB LAYOUT DRAWN BY MCI

The BTX Corporation 12 Huron Drive, Natick, Massachusetts 01760		
DATE 14 SEP 81	DRAWN BY DJB *	APPROVED BY <i>Smith G.</i>
SCALE 1x	REVISED 31 MAR 82	P/N 05-4700-3208
SUBASSY CABLE SLAVE SHADOW TO MCI JH-110		
CLIP LEAD TACH		DRAWING NUMBER 59-4700-3208
REV 0		p. 1 of 3



**PROCEDURE:**

- 1) Remove "JUMPER" from "B" to "2".
- 2) Reposition "LEAD" from "2" to "B".
- 3) Add 22K Resistor from "B" to "2".

**CAUTION:**

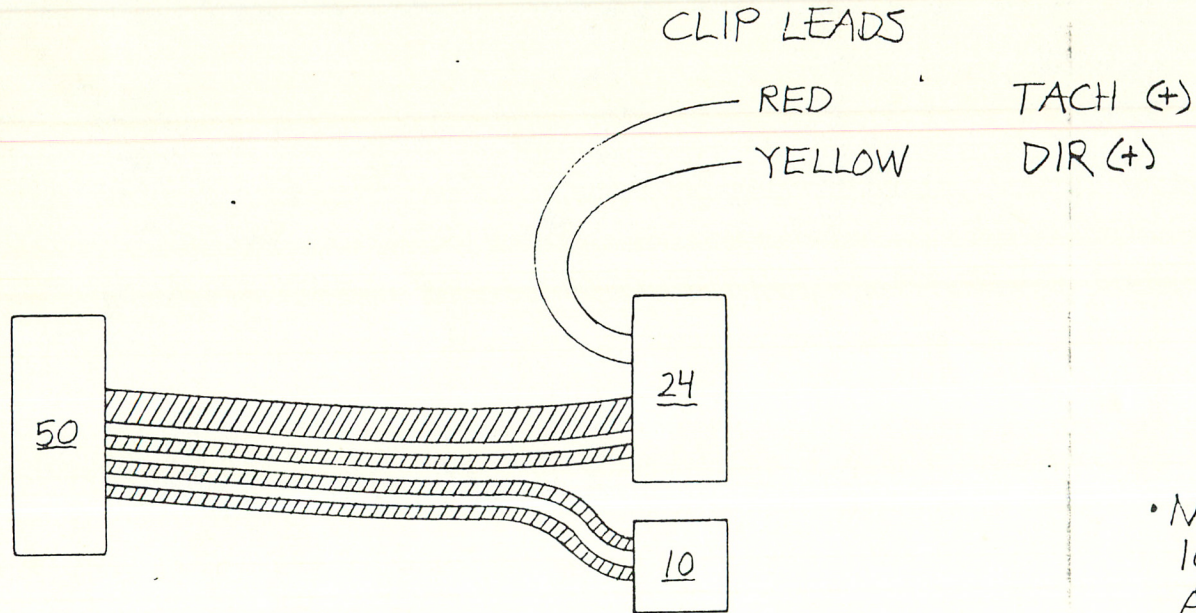
This procedure should be applied to these five switches: PLAY, STOP, FWD, RWD, and REC; unless any have already been modified.

**Resistor:**

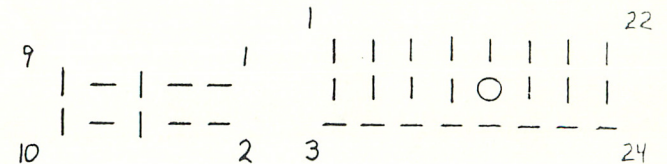
22K 1/4-W 5%  
 BTX P/N 01-012-22301  
 1 per switch modified.

- THESE MODS APPLY TO REMOTE CONTROL BOX & AUTOLOCATOR BOX.
- THIS PREVENTS THE DESTRUCTION OF TRANSISTOR ARRAYS ON SHADOW I/O PCB.

The BTX Corporation 12 Huron Drive, Natick, Massachusetts 01760		
DATE	DRAWN BY	APPROVED BY
16 SEP 81	DJB	<i>[Signature]</i>
SCALE	REVISED	P/N 05-4700-3208
NONE	31 MAR 82	
SUBASSY CABLE SLAVE SHADOW TO MCI JH-110		
MODIFICATIONS TO MCI REMOTE CONTROL REVO		DRAWING NUMBER 59-4700-3208 P. 3 of 3



• NOTE: THE PINS OF THE 10- & 24-PIN CONNECTORS ARE NUMBERED INTERNALLY ONLY. FOR REFERENCE, THE EXTERNAL POSITIONS ARE AS FOLLOWS:



IMPORTANT: MCI REMOTE CONTROL BOX MUST BE MODIFIED OR DAMAGE TO THE SHADOW WILL OCCUR. SEE D/N 59-4700-3208 FOR MODIFICATION INSTRUCTIONS.

CONSTRUCTION NOTES	The BTX Corporation 12 Huron Drive, Natick, Massachusetts 01760		
LENGTH: 20 FT MAIN	DATE 14 SEP 81	DRAWN BY DJB	APPROVED BY <i>SBG</i>
2 FT CLIP LEADS	SCALE NONE	REVISED 31 MAR 82	P/N 05-4700-3208
TIE CABLE EVERY FOOT	SUBASSY CABLE SLAVE SHADOW TO MCI JH-110		
TWO CLIP LEADS: SEE D/N 59-4700-3208	PRODUCTION DRAWING CABLE-MAKING		
REMOTE CONTROL BOX MODIFICATION: SEE D/N 59-4700-3208	REV 0		DRAWING NUMBER 52-4700-3208
			page 1 of 1

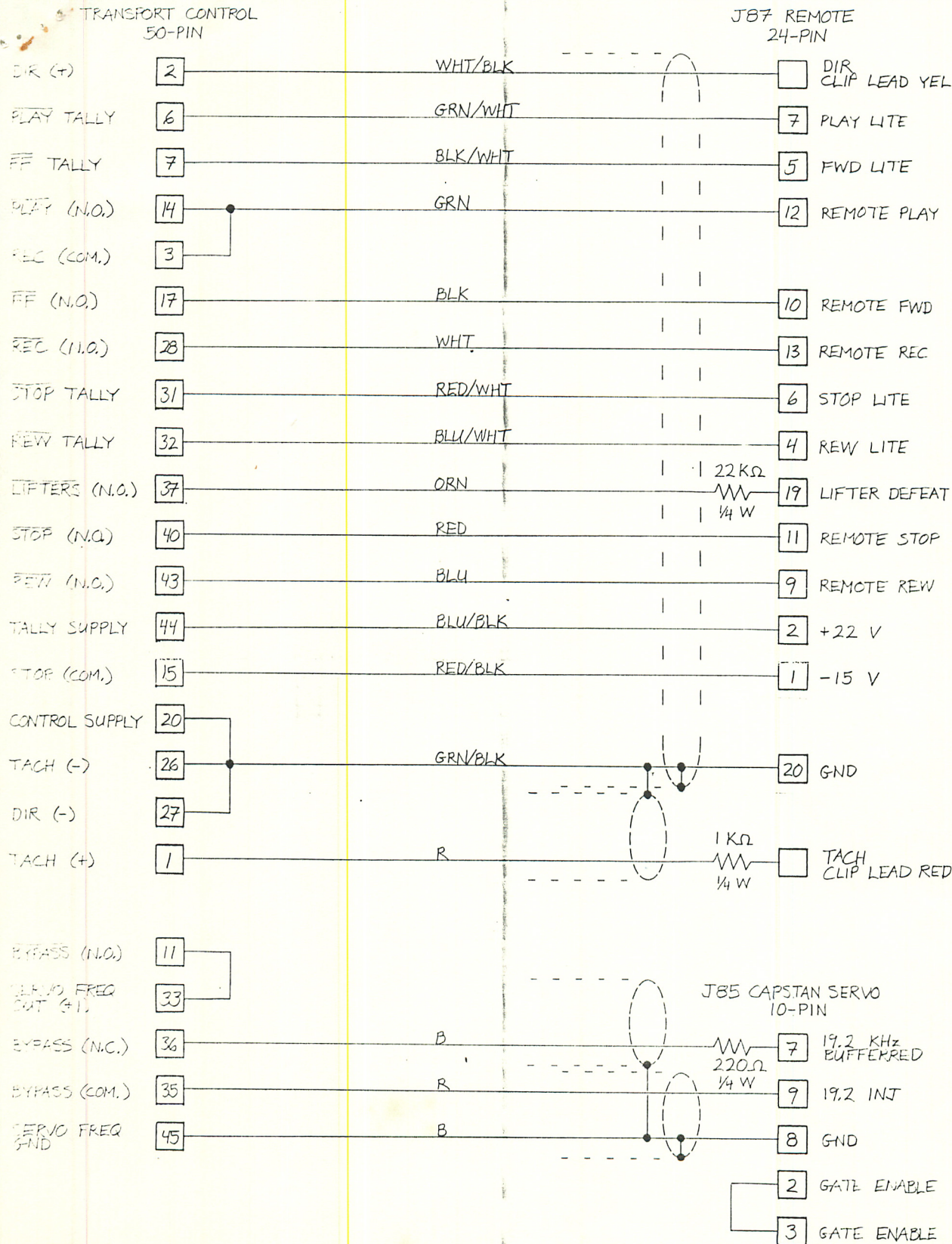




SHADOW 4700

SLAVE

MCI JH-110



3205



BTX CABLE POLICY

Because each machine to which BTX Corporation equipment interfaces, has from time to time changes or errors beyond our control, BTX will not be liable for the accuracy of the interface cabling or any consequential damages incurred by the use of our equipment or cabling. Each user must assure that the interface of BTX equipment to the various equipments involved is proper for the specific piece of equipment involved. Naturally, BTX will be happy to provide any reasonable technical assistance required.

MEI JH 110

**THE BTX CORPORATION**  
75 WIGGINS AVENUE • BEDFORD, MA 01730  
TEL. (617) 275-1420