

GRAMER

Haldorson

CHICAGO 39, ILL.

**TRANSFORMER
CORPORATION**

MIL-T-27A Steel Jacket Line

MILITARY STANDARD TRANSFORMERS

The U. S. Army Signal Corps, U. S. Bureau of Ships, and the U. S. Air Force, working jointly through the Armed Services Electronic Standards Agency, and in cooperation with leading producers of military transformers, have established certain military standard transformers. These transformers bear government classification and part numbers, as shown below. Dimensions, mounting centers, terminal arrangements, and markings are all in accordance with government specifications. All these units will meet the requirements of Grade 1 and Grade 4 MIL-T-27A specifications for Class R operation. The components listed in this series have application in military communication and control equipment, whether air-borne, ship-borne, mobile or ground installed.

Input		300 TO 10,000 CPS MAXIMUM ALTITUDE 50,000 FT.						
Part No.	MIL-T-27A Classification	MIL-T-27A Part No.	Primary Impedances (Ohms)	Max. D.C. Amps. In Primary	Secondary Impedance (Ohms)	Max. Power Level	Case Size	Wt. Lbs.
27A02	TF1RX10AJ001	MS-90002	*600 ohms CT		135,000 ohms CT	15 dbm.	AJ	.75

Interstage		300 TO 10,000 CPS MAXIMUM ALTITUDE 50,000 FT.						
Part No.	MIL-T-27A Classification	MIL-T-27A Part No.	Primary Impedances (Ohms)	Max. D.C. Amps. In Primary	Secondary Impedance (Ohms)	Max. Power Level	Case Size	Wt. Lbs.
27A03	TF1RX16AJ001	MS-90003	*600 ohms CT		*600 ohms CT	15 dbm.	AJ	.75
27A01	TF1RX15AJ001	MS-90000	10000 ohms CT	.010 amp.	22,500 ohms CT	15 dbm.	AJ	.75

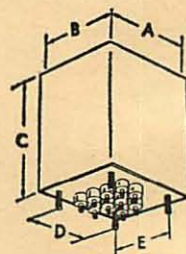
Output		300 TO 10,000 CPS MAXIMUM ALTITUDE 50,000 FT.						
Part No.	MIL-T-27A Classification	MIL-T-27A Part No.	Primary Impedances (Ohms)	Max. D.C. Amps. In Primary	Secondary Impedance (Ohms)	Max. Power Level	Case Size	Wt. Lbs.
27501	TF1RX16AJ002	MS-90001	*600 ohms CT		4/8/16 ohms	2 watts	AJ	1
27502	TF1RX13AJ001	MS-90004	4800/7600	.040 amp.	*600 ohms CT	2 watts	AJ	1
27503	TF1RX13AJ002	MS-90005	4800/7600	.040 amp.	4/8/16 ohms	2 watts	AJ	1
27504	TF1RX13AJ003	MS-90006	15000 ohms CT	.010 amp.	*600 ohms CT	2 watts	AJ	1
27505	TF1RX13AJ004	MS-90007	24000 ohms CT	.020 amp.	*600 ohms CT	1 watt	AJ	1
27506	TF1RX13AJ005	MS-90008	60000 ohms CT	.020 amp.	*600 ohms CT	.5 watt	AJ	1

Part No.	MIL-T-27A Classification	MIL-T-27A Part No.	Inductance (Henrys)		Current (MADC)		Case Size
			Series	Parallel	Series	Parallel	
27C01	TF1RX04FA001	MS-90009	16	4	80	160	FA
27C02	TF1RX04GA002	MS-90010	25	6.25	80	160	GA
27C03	TF1RX04HA003	MS-90011	40	10	80	160	HA
27C04	TF1RX04HA005	MS-90013	16	4	125	250	HA
27C05	TF1RX04JB006	MS-90014	25	6.25	125	250	JB
27C06	TF1RX04KA007	MS-90037	40	10	125	250	KA
27C07	TF1RX04LA009	MS-75000	16	4	200	400	LA
27C08	TF1RX04MA010	MS-75001	25	6.25	200	400	MA
27C09	TF1RX04NA012	MS-75002	16	4	315	630	NA
27C10	TF1RX04YY013	MS-75003	25	6.25	315	630	YY

Part No.	MIL-T-27A Classification	MIL-T-27A Part No.	Secondary		Insulation Volts RMS	Case Size	Wt. Lbs.
			Volts	Amps			
27F36	TF1RX01EB002	MS-90016	2.5	3.0	2500	EB	1 1/2
27F37	TF1RX01GB003	MS-90017	2.5	10	2500	GB	2 1/2
27F38	TF1RX01FB004	MS-90018	5.0	3.0	2500	FB	1 3/4
27F39	TF1RX01HB005	MS-90019	5.0	10	2500	HB	4
27F40	TF1RX01FB006	MS-90020	6.3	2.0	2500	FB	1 3/4
27F41	TF1RX01GB007	MS-90021	6.3	5.0	2500	GB	2 3/4
27F42	TF1RX01JB008	MS-90022	6.3	10	2500	JB	5
27F43	TF1RX01KB009	MS-90023	6.3	20	2500	KB	8
27F44	TF1RX01JB012	MS-90024	2.5	10	10000	JB	4 3/4
27F45	TF1RX01KB013	MS-90025	5.0	10	10000	KB	7

**FREE REGISTERED
CATALOG**

Your free "personalized" registered loose-leaf catalog containing information on more than 2500 highest quality transformers and coils may be obtained by sending your name and address to Gramer-Haldorson, Dept. M, 2734 N. Pulaski Rd., Chicago 39, Illinois.



**MIL-T-27A
CASE TYPE**

CASE DIMENSIONS

	AJ	EB	FA	FB	GA
A	1 5/8	1 15/16	2 5/16	2 5/16	2 3/4
B	1 5/8	1 13/16	2 1/16	2 1/16	2 3/8
C	2 3/8	2 7/16	3 1/8	2 1/2	3 13/16
D	1 3/16	1 3/8	1 11/16	1 11/16	2 1/8
E	1 3/16	1 1/4	1 7/16	1 7/16	1 3/4

	GB	HA	HB	JB
A	2 3/4	3 1/16	3 1/16	3 9/16
B	2 3/8	2 5/8	2 5/8	3 1/16
C	2 13/16	4 1/4	3 3/16	3 7/8
D	2 1/8	2 19/64	2 19/64	2 5/8
E	1 3/4	1 55/64	1 55/64	2 1/8

	KA	KB	LA	LB
A	3 15/16	3 15/16	4 5/16	4 5/16
B	3 3/8	3 3/8	3 11/16	3 11/16
C	5 1/4	4 5/16	5 9/16	4 1/2
D	3	3	3 5/16	3 5/16
E	2 7/16	2 7/16	2 11/16	2 11/16

	MA	MB	NA	NB
A	4 11/16	4 11/16	5 1/16	5 1/16
B	4	4	4 5/16	4 5/16
C	6	4 15/16	6 13/16	5 1/2
D	3 11/16	3 11/16	4 1/16	4 1/16
E	3	3	3 5/16	3 5/16



FREE REGISTERED CATALOG

Your free "personalized" registered loose-leaf catalog containing information on more than 2500 highest quality transformers and coils may be obtained by sending your name and address to Gramer-Halldorson, Dept. M, 2734 N. Pulaski Rd., Chicago 39, Illinois.

MIL-T-27A Steel Jacket Line

Power Transformers — Reactor Input Systems

Part No.	MIL-T-27A Classification	MIL-T-27A Part No.	Secondary		D-C V Output	Rectifier Filament		Filament No. 2		Case Size	Wt. Lbs.
			A-C Volts	D-C MA.		Volts	Amps	Volts	Amps		
27R86	TF1RX03HA001	MS-90026	200-100-0-100-200	70	385	6.3/5	2	6.3	3	HA	4
27R87	TF1RX03JB002	MS-90027	325-0-325	70	260	6.3/5	2	6.3	4	JB	5
27R88	TF1RX03KB006	MS-90028	325-0-325	150	245	6.3	5	5	3	KB	7 1/4
27R89	TF1RX03LB003	MS-90029	400-0-400	175	318	5	3	6.3	8	LB	10
27R90	TF1RX03MB004	MS-90030	450-0-450	250	345	5	3	6.3	8	MB	13
27R91	TF1RX02KB001	MS-90031	350-0-350	250	255					KB	7 1/2
27R92	TF1RX02LB002	MS-90032	550-0-550	250	419					LB	11
27R93	TF1RX02NB003	MS-90036	800-0-800	250	640					NB	16 1/2

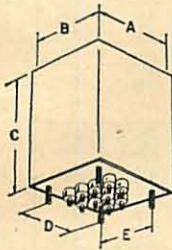
* Split center tap—balanced windings.

PRIMARY—105/115/125 V. FREQUENCY—34-66 CYCLES

FOR 400 CYCLE OPERATION

These transformers are designed to meet all of the specifications of MIL-T-27A Class 5. They are "steel jacketed," in case sizes and dimensions, exactly as specified by MIL-T-27A standards.

These units have been developed for aircraft and mobile communication control equipment, for use in the guided missile program, and should have application in future developments in the fields of aeronautics and rocketry.



MIL-T-27A CASE TYPE

Power

PRIMARY 105/115/125 V. 380-1000 CYCLES

Part No.	Plate Supply		Rectifier Filament		Other Filaments		Case Type	Terminal Type	Wt. Lbs.
	Volts	M.A.D.C.	Volts	Amps.	Volts	Amps.			
27R62*	250-0-250	40	6.3 CT	1	6.3	1	EB	B	1 1/2
27R94	270-0-270	55	5.0	2	6.3 CT	2	FA	A	1 1/2
27R95	335-0-335	70	5.0	2	6.3 CT	3	FA	A	1 3/4
27R96	375-0-375	120	5.0	3	6.3 CT	4	HA	B	2 1/2
27R97	440-0-440	165	5.0	3	6.3 6.3 6.3 6.3	7.5 3 3 0.6	JA	B	6
27R98	450-0-450	200	5.0	2	6.3 6.3 6.3	4 4 0.6	JA	B	5 3/4
27R99	550-370-75-0 75-370-550	300	5.0	6	6.3 CT 6.3 CT	5 1	KA	B	6 1/2

* Primary 115 Volts 380-1000 CPS.

Filament Transformers

PRIMARY 105/115/125 V. 380-1000 CYCLES

Part No.	Secondary		Insulation Volts Rms.	Case Type	Terminal Type	Wt. Lbs.
	Volts	Amps.				
27F35	6.3 CT	2	2000	AJ-1	7 Pin	3/4
27F59	6.3 CT	3	2500	AJ	B	3/4
27F60	6.3 CT	5.5	2500	EA	B	1
27F61	6.3 CT	10	2500	FA	B	1 3/4
27F62	6.3 CT	20	2500	GA	B & C	2 1/2

Chokes

Part No.	Inductance Ratings		D.C. Resistance (Ohms)	Insulation Volts Rms.	Case Type	Terminal Type	Wt. Lbs.
	Henrys	M.A.D.C.					
27C26	2.0	55	160	2500	AH	B	1/4
27C27	2.0	70	165	2500	AH	B	1/2
27C28	2.0	120	100	2500	EB	B	1
27C29	2.0	165	90	2500	EB	B	1 1/2
27C30	2.0	200	73	2500	FB	B	1 3/4
27C31	2.0	300	47	2500	HB	B	3 1/4

Step-Down Transformer

THREE-PHASE 400 CYCLES

400 cycle 3 phase. 27V17 is a Y-Y connected 400 cycle 3 phase Step-Down Transformer—Primary is 115 volts per phase. Designed for use primarily in airborne communication and control equipment. This transformer is rated at 140 VA.

Part No.	Secondary		Case Type	Terminal Type	Wt. Lbs.
	Volts	VA. Cap.			
27V17	28.5	140	HA	B	3

CASE DIMENSIONS

	AH	AJ	AJ-1	EA
A	1 5/16	1 5/8	1 5/8	1 15/16
B	1 5/16	1 5/8	1 5/8	1 13/16
C	1 3/4	2 3/8	2 3/8	2 3/4
D	1 3/8	1 3/16	1 5/8	1 3/8
E	1 1/4	1 3/16		1 1/4

	EB	FA	FB	GA
A	1 15/16	2 5/16	2 5/16	2 3/4
B	1 13/16	2 1/16	2 1/16	2 3/8
C	2 7/16	3 1/8	2 1/2	3 13/16
D	1 3/8	1 11/16	1 11/16	2 1/8
E	1 1/4	1 7/16	1 7/16	1 3/4

	HA	HB	JA	KA
A	3 1/16	3 1/16	3 9/16	3 15/16
B	2 5/8	2 5/8	3 1/16	3 3/8
C	4 1/4	3 3/16	4 7/8	5 1/4
D	2 19/64	2 19/64	2 5/8	3
E	1 55/64	1 55/64	2 1/8	2 7/16