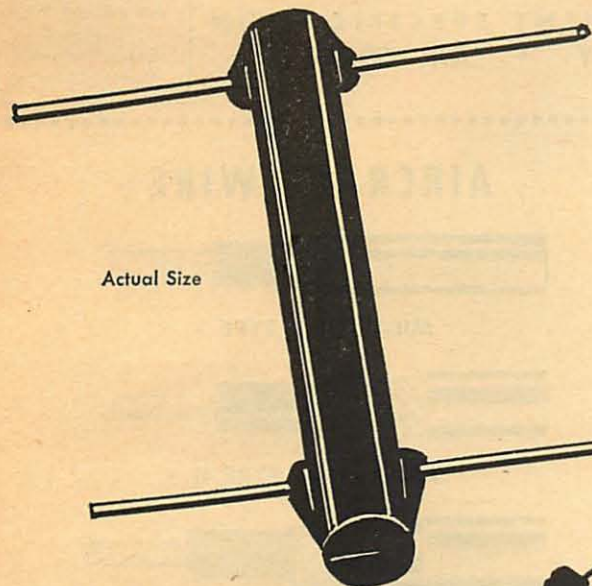




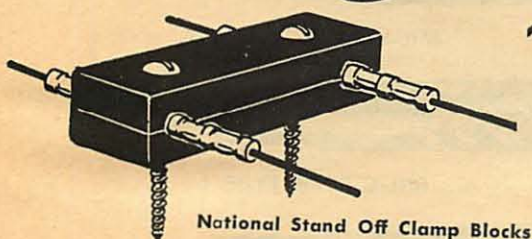
NATIONAL OPENLINE

DESIGNED FOR COMMERCIAL TV DISTRIBUTION SYSTEMS AND RF POWER TRANSMISSION

Specifications: two inch spacing between conductors . . . 12 or 14 ga. copperweld . . . 470 or 500 ohm impedance . . . attenuation: 150 mc 0.25 DB PER 100 FEET, AT 30 mc 0.1 DB per 100 FEET. Velocity factor 0.975 . . . copperweld steel for maximum strength and electrical stability, and to insure permanent uniform performance . . . Spreaders are brown polystyrene, spaced at average five foot intervals, staggered slightly to avoid spurious resonances.



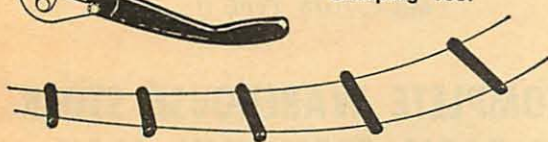
Actual Size



National Stand Off Clamp Blocks



Nicopress connector sleeve Crimping Tool



CATALOG #N-470-300: TAPERED-LINE impedance matching transformer for 2 inch OPENLINE. Matches 470 ohm line to 300 ohms.



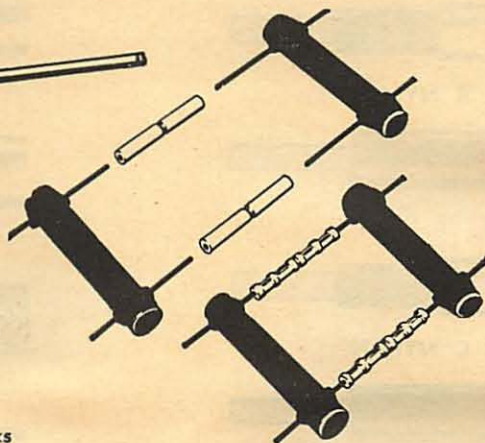
NATIONAL OPENLINE domestic television lead-in. Solid copper, Formvar coated.

Catalog #N-470-1

1 inch spacing between conductors . . . Spreaders at 6 inch intervals . . . Impedance 470 ohms . . . Standard put-up 250 foot reels, 12 reels per carton. Shipping weight 50 lbs.

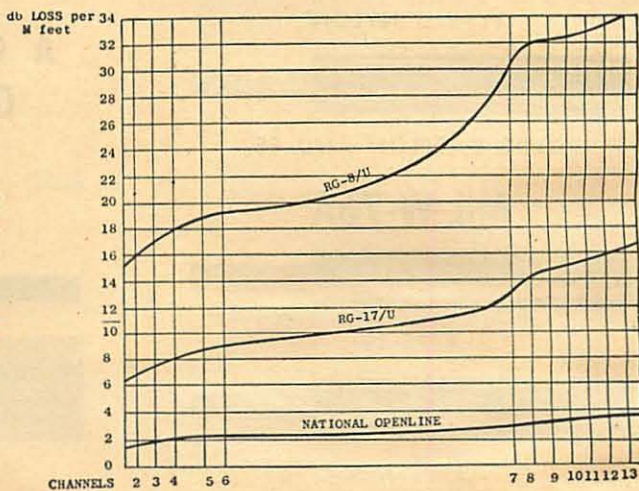
Catalog #N-300-1/2

1/2 inch spacing between conductors . . . Spreaders at 6 inch intervals . . . Impedance 300 ohms (approx.) . . . Standard put-up 250 foot reels, 20 reels per carton. Shipping weight 75 lbs. NATIONAL 1 inch and 1/2 inch OPENLINE is available on 100, 75, 60 and 50 foot reels and is also available in Copperweld.



National Connector Sleeves

Charts showing the db loss per 1000 feet of NATIONAL OPENLINE with comparison to RG-8/U and RG-17/U.



CHANNELS	2	3	4	5	6	7	8	9	10	11	12	13
db LOSS	1.67	1.82	1.90	2.03	2.11	2.294	2.43	2.64	2.84	3.06	3.24	3.40
RG-8/U	16.7	18.2	19.0	20.3	21.1	22.94	24.3	26.4	28.4	30.6	32.4	34.0
RG-17/U	7.3	8.0	8.75	9.0	9.5	10.0	10.75	11.5	12.25	13.0	13.75	14.5