

6

5

4

3

2

1

REVISION RECORD			
LTR	ECO NO:	APPROVED:	DATE:

D

D

C

C

B

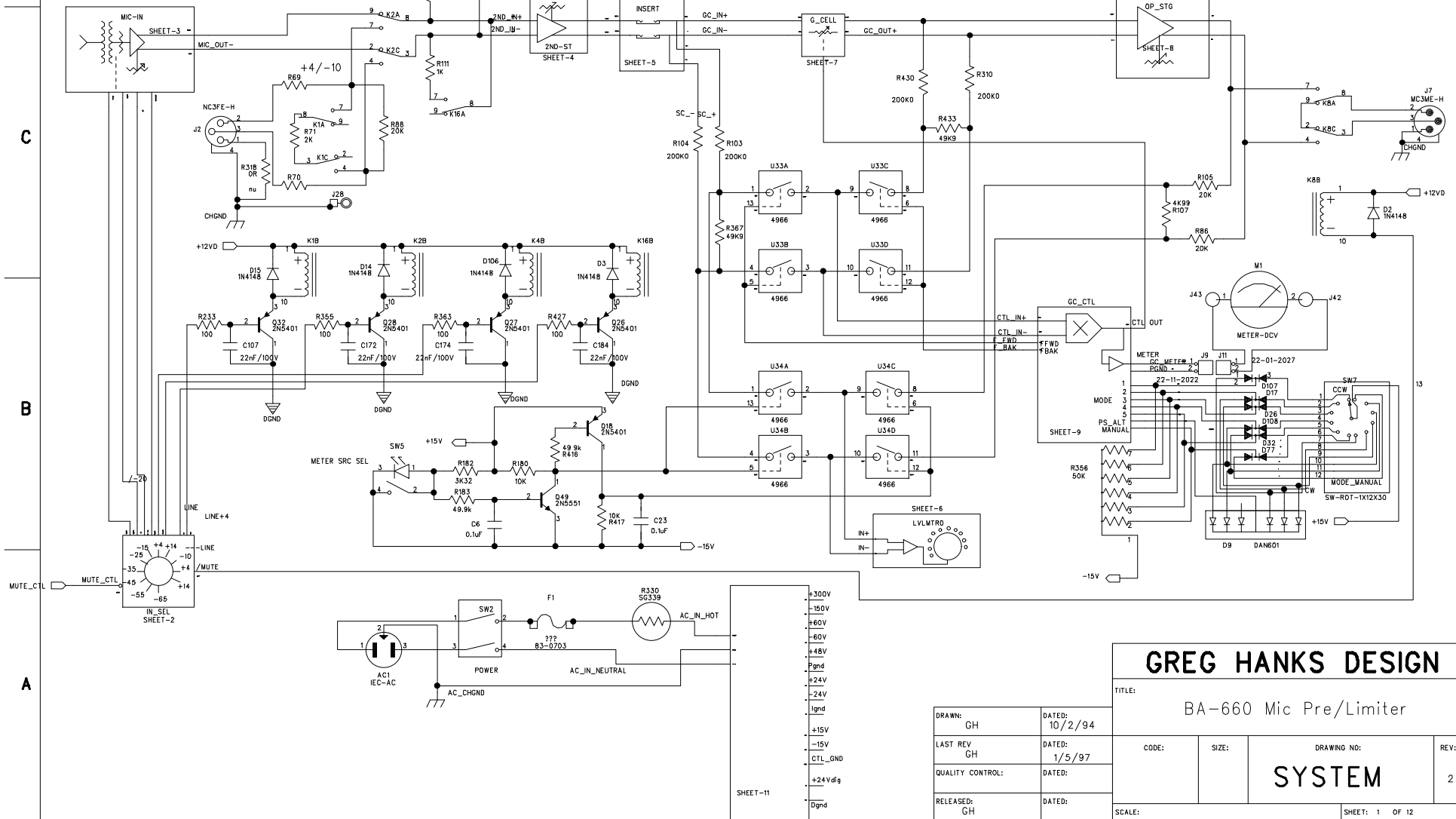
B

A

A

MIN GAIN=1DB  
NOM GAIN=33DB  
MAX GAIN=48DB

NOM -55



6

5

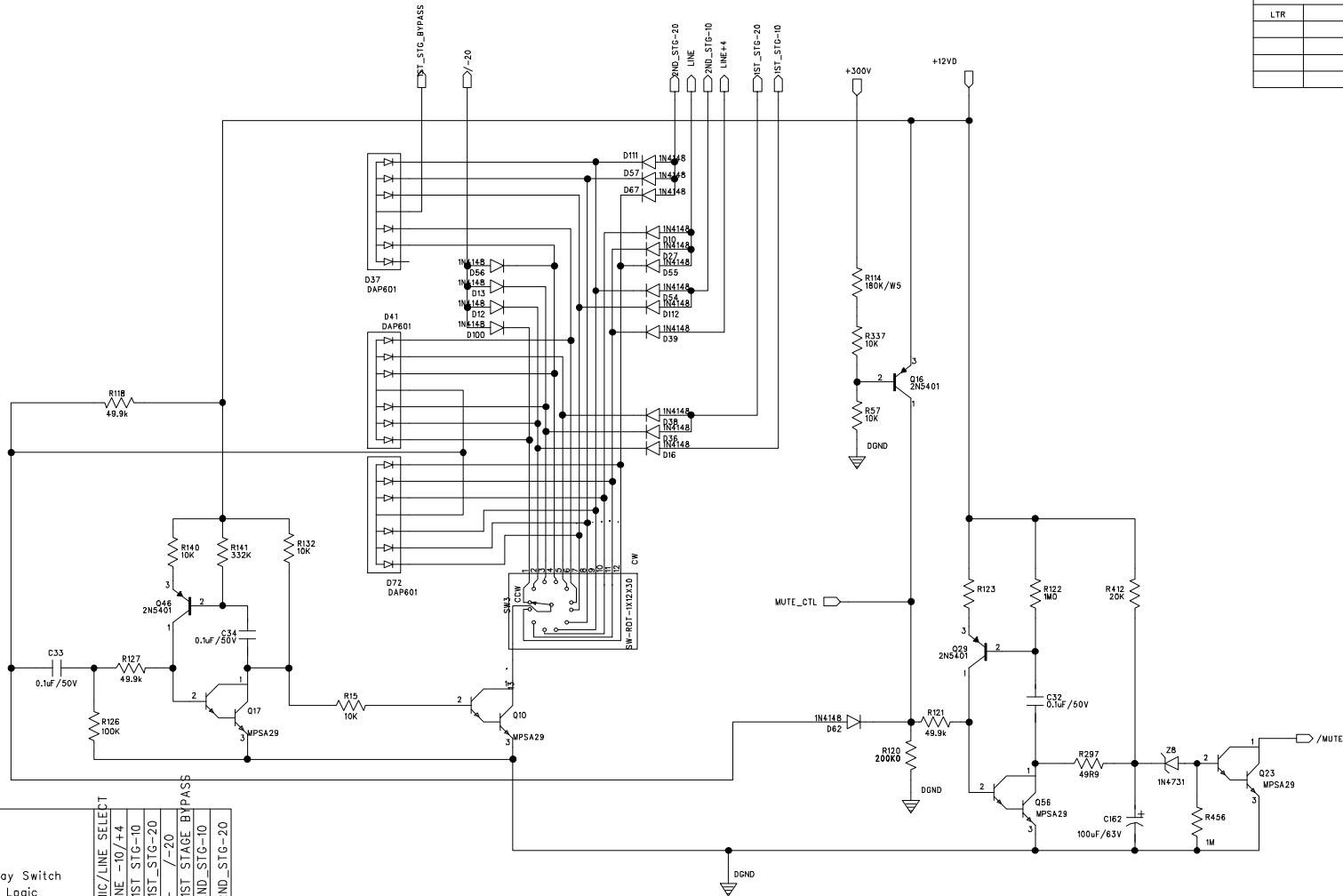
4

3

2

1

REVISION RECORD			
LTR	ECO NO:	APPROVED.	DATE:



GREG HANKS DESIGN

TITLE:

BA-66 Mic Pre/Limiter

DRAWN:	GH	DATED:	10/1/94
LAST REV	GH	DATED:	1/5/97
QUALITY CONTROL:		DATED:	
RELEASED:	GH	DATED:	

CODE:

SIZE:

DRAWING NO:

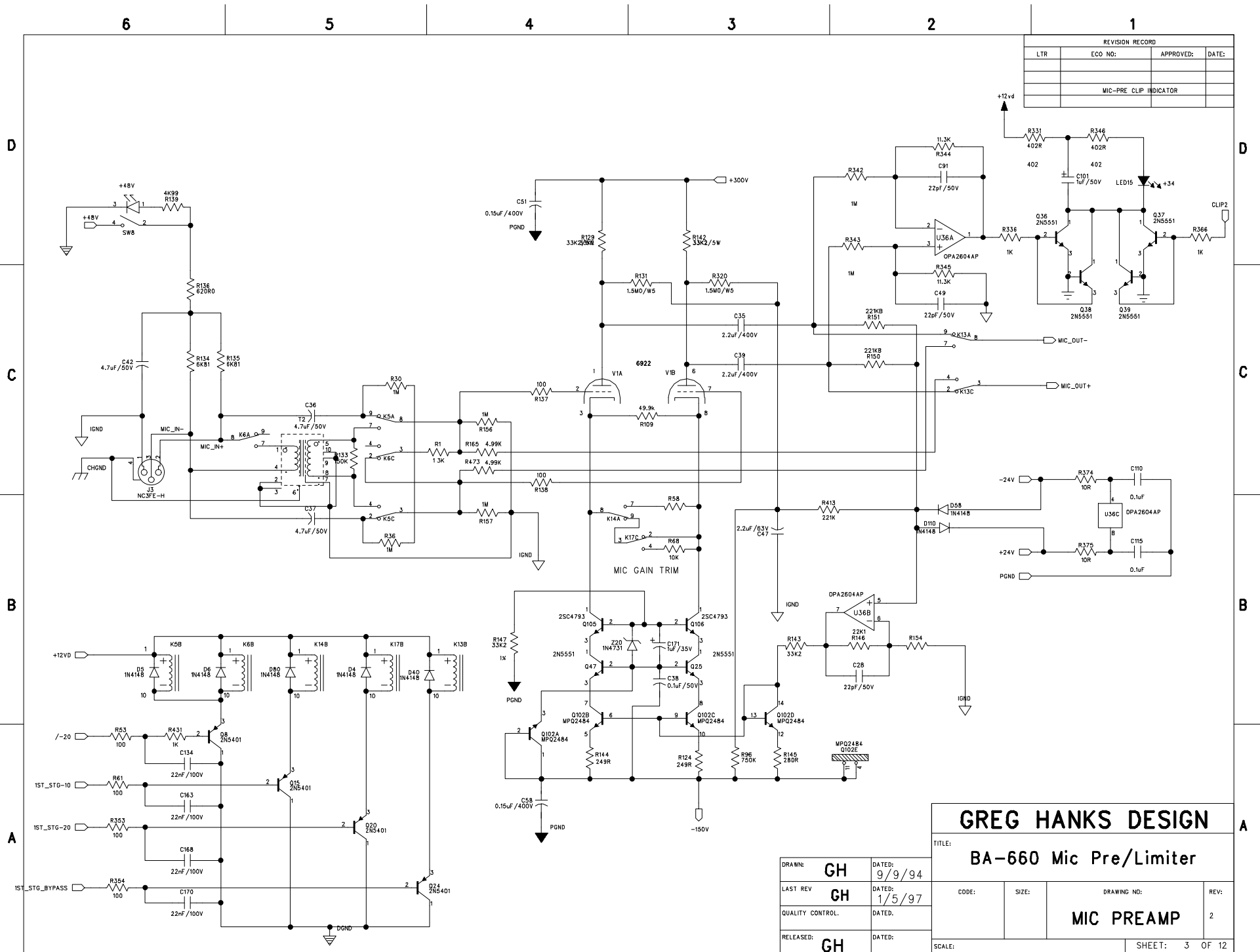
REV:

INP SEL &amp; MUTE CTL

2

SCALE:

SHEET: 2 OF 12









6

5

4

3

2

1

REVISION RECORD			
LTR	ECO NO:	APPROVED:	DATE:

D

D

C

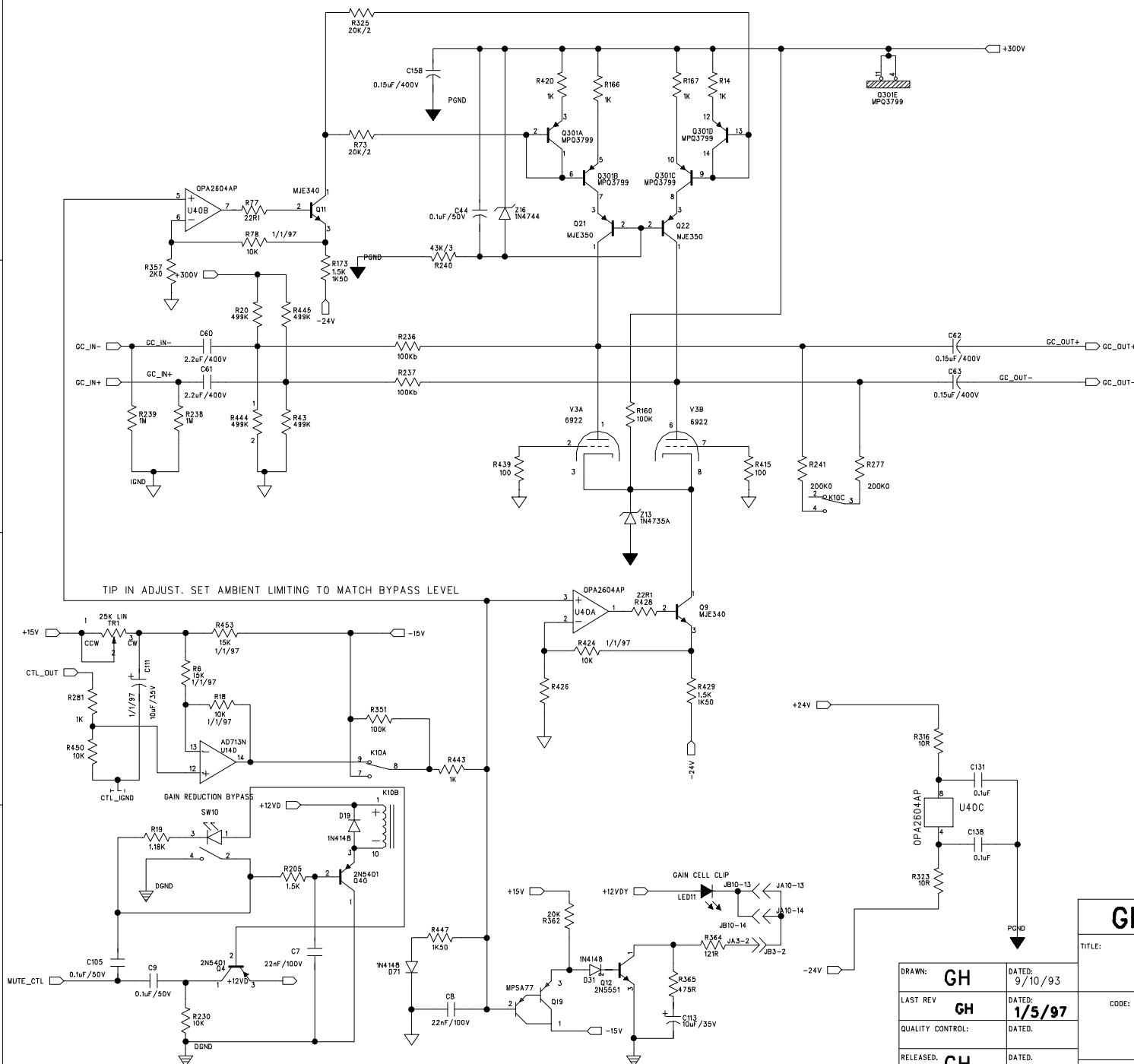
C

B

B

A

A



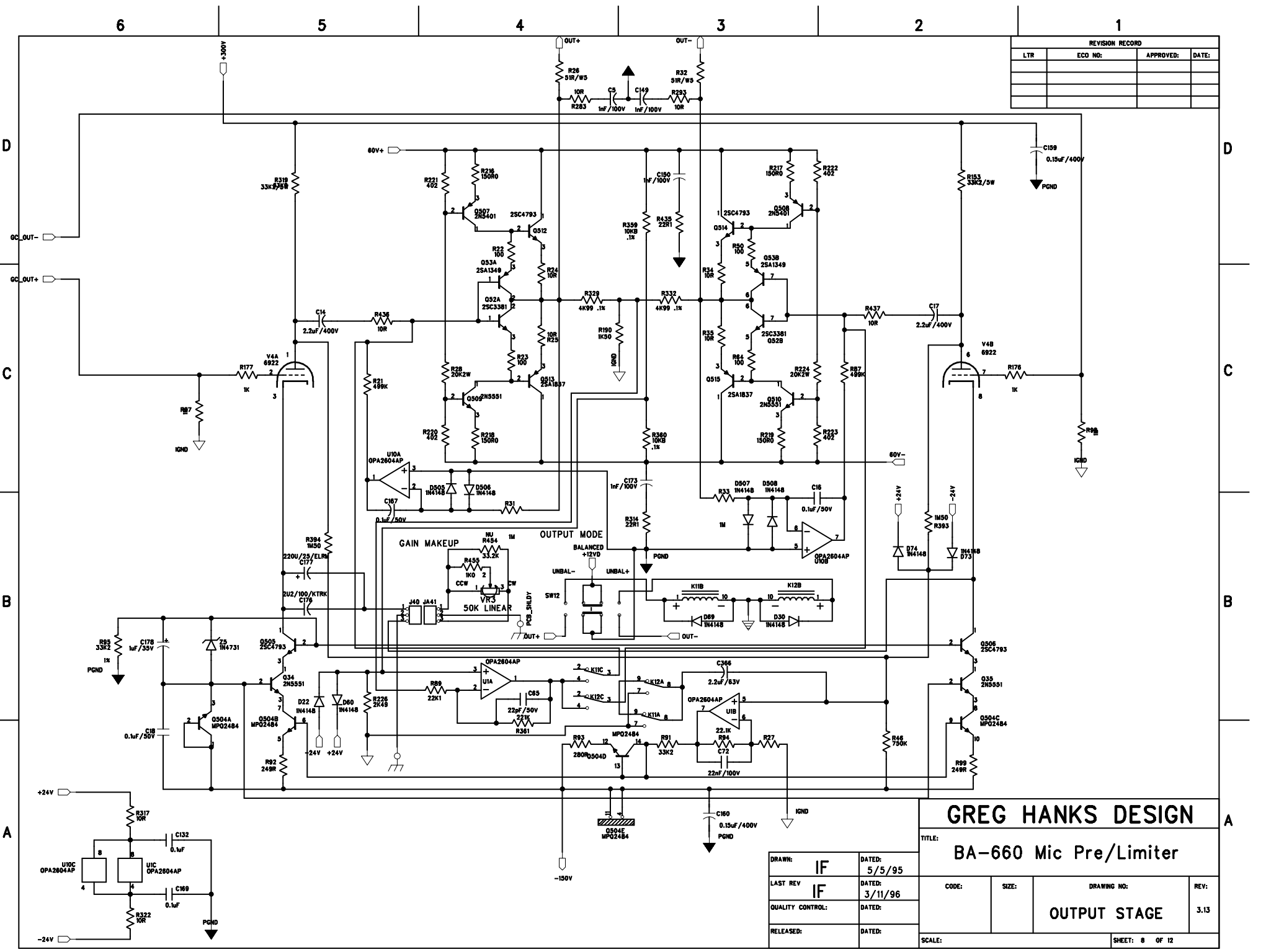
GREG HANKS DESIGN

TITLE:

BA-660 Mic Pre/Limiter

DRAWN: GH	DATED: 9/10/93
LAST REV GH	DATED: 1/5/97
QUALITY CONTROL:	DATED:
RELEASED: GH	DATED:

CODE:	SIZE:	DRAWING NO:	REV:
		GAIN CELL	2
SCALE:	SHEET: 7 OF 12		



REVISION RECORD			
LTR	ECO NO:	APPROVED:	DATE:

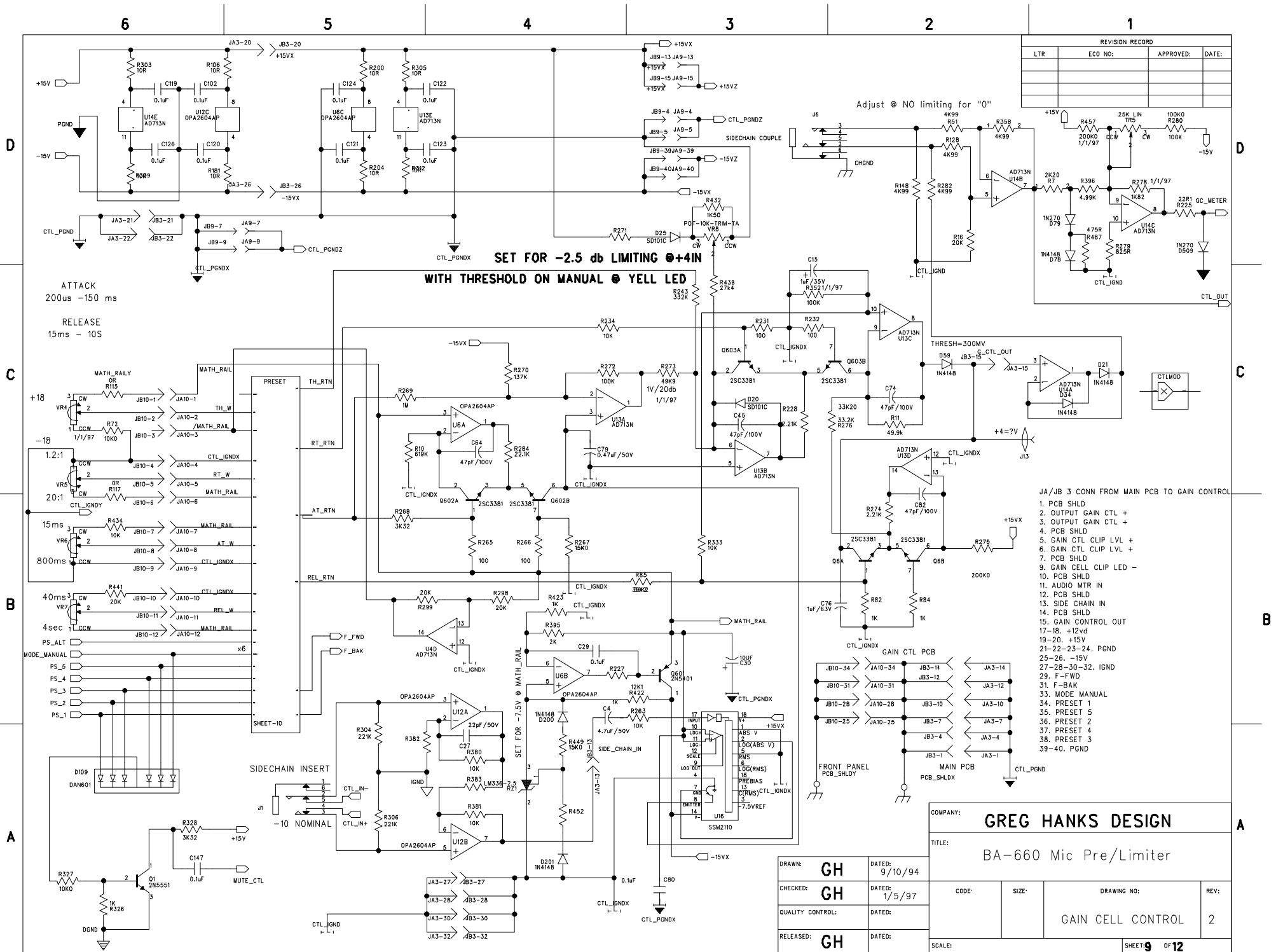
GREG HANKS DESIGN

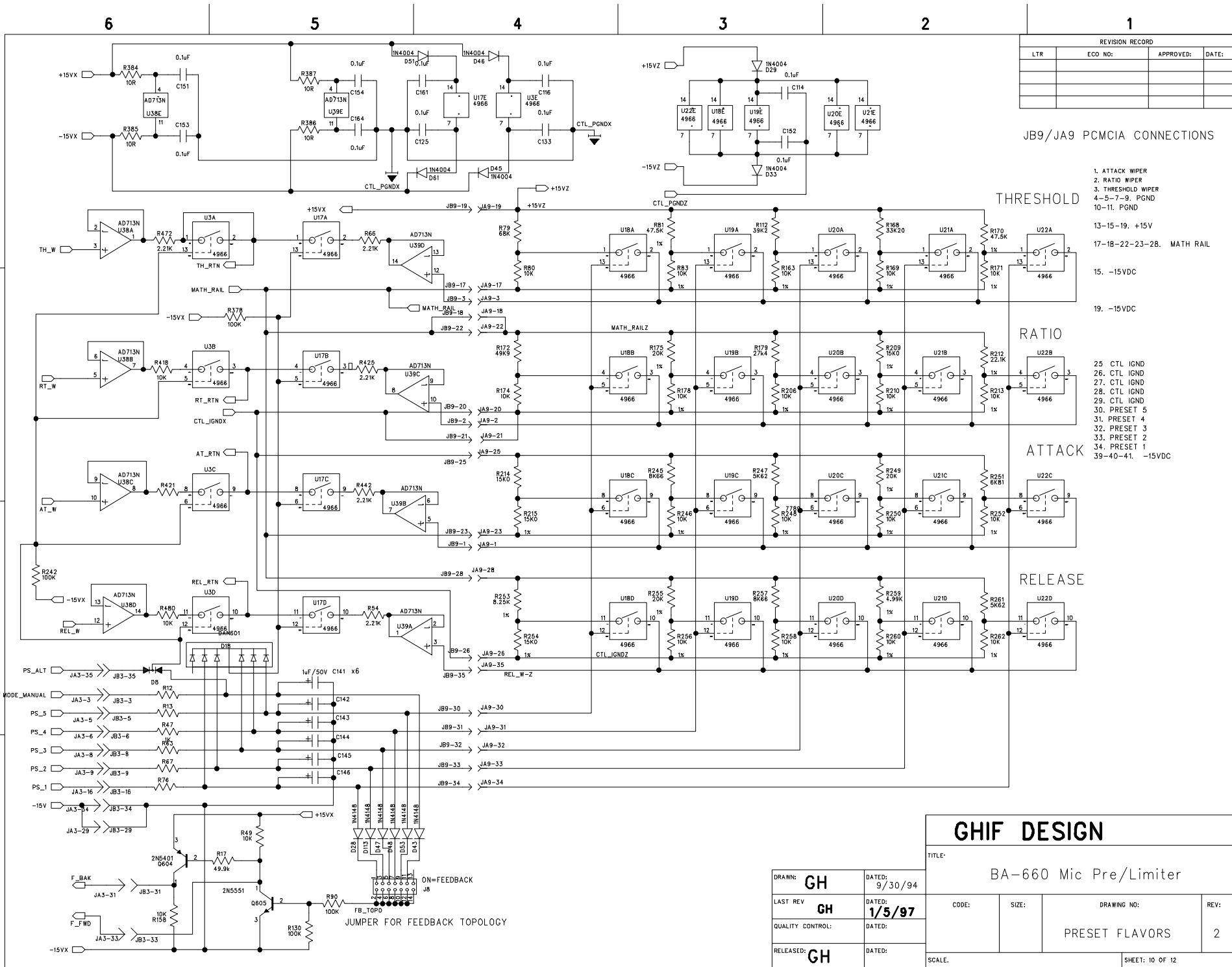
TITLE:  
BA-660 Mic Pre/Limiter

DRAWN:	IF	DATED:	5/5/95
LAST REV	IF	DATED:	3/11/96
QUALITY CONTROL:		DATED:	
RELEASED:		DATED:	

CODE:	SIZE:	DRAWING NO:	REV:
			3.13
SCALE:			SHEET: 8 OF 12







REVISION RECORD			
LTR	ECO NO:	APPROVED:	DATE:

JB9/JA9 PCMCIA CONNECTIONS

- 1. ATTACK WIPER
- 2. RATIO WIPER
- 3. THRESHOLD WIPER
- 4-5-7-9. PGND
- 10-11. PGND
- 13-15-19. +15V
- 17-18-22-23-28. MATH RAIL
- 15. -15VDC
- 19. -15VDC
- 25. CTL IGND
- 26. CTL IGND
- 27. CTL IGND
- 28. CTL IGND
- 29. CTL IGND
- 30. PRESET 5
- 31. PRESET 4
- 32. PRESET 3
- 33. PRESET 2
- 34. PRESET 1
- 39-40-41. -15VDC

GHIF DESIGN				
TITLE: BA-660 Mic Pre/Limiter				
DRAWN: GH	DATE: 9/30/94	CODE:	SIZE:	DRAWING NO:
LAST REV: GH	DATE: 1/5/97	PRESET FLAVORS		REV: 2
QUALITY CONTROL:	DATE:	SCALE:		SHEET: 10 OF 12
RELEASED: GH	DATE:			

