

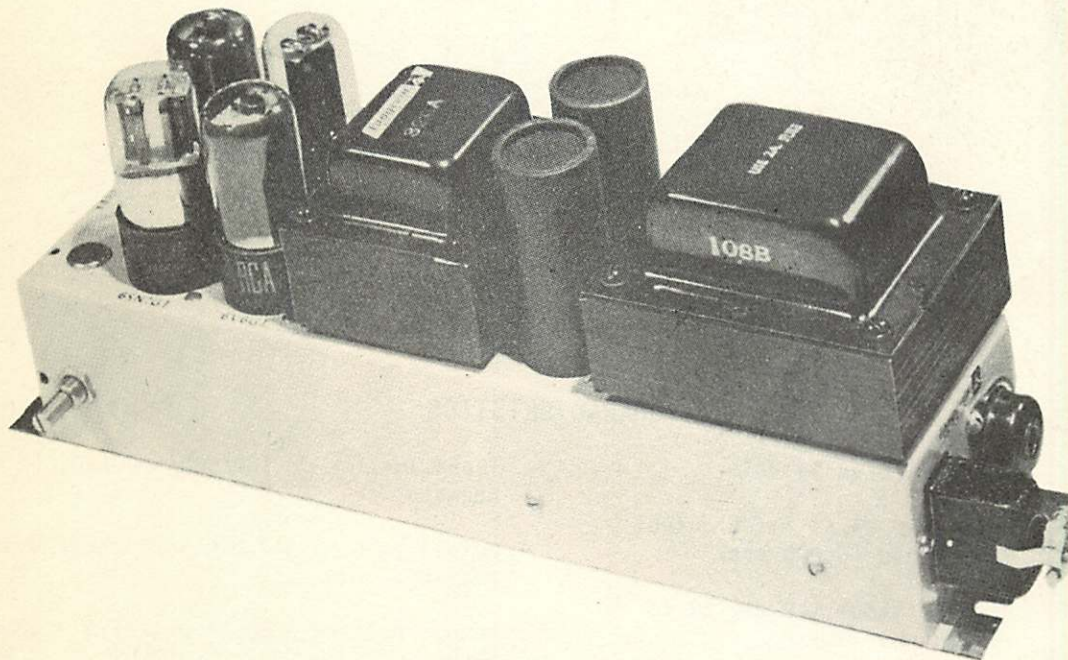
8 WATT MONITOR AMPLIFIER

BY
Langevin

TYPE 130-A

The Langevin Type 130A Monitor Amplifier has been designed to fill the need for a small medium power amplifier for monitor use in Broadcast, FM, TV and Wired Music services. Excellent performance characteristics and quality construction make it a dependable unit.

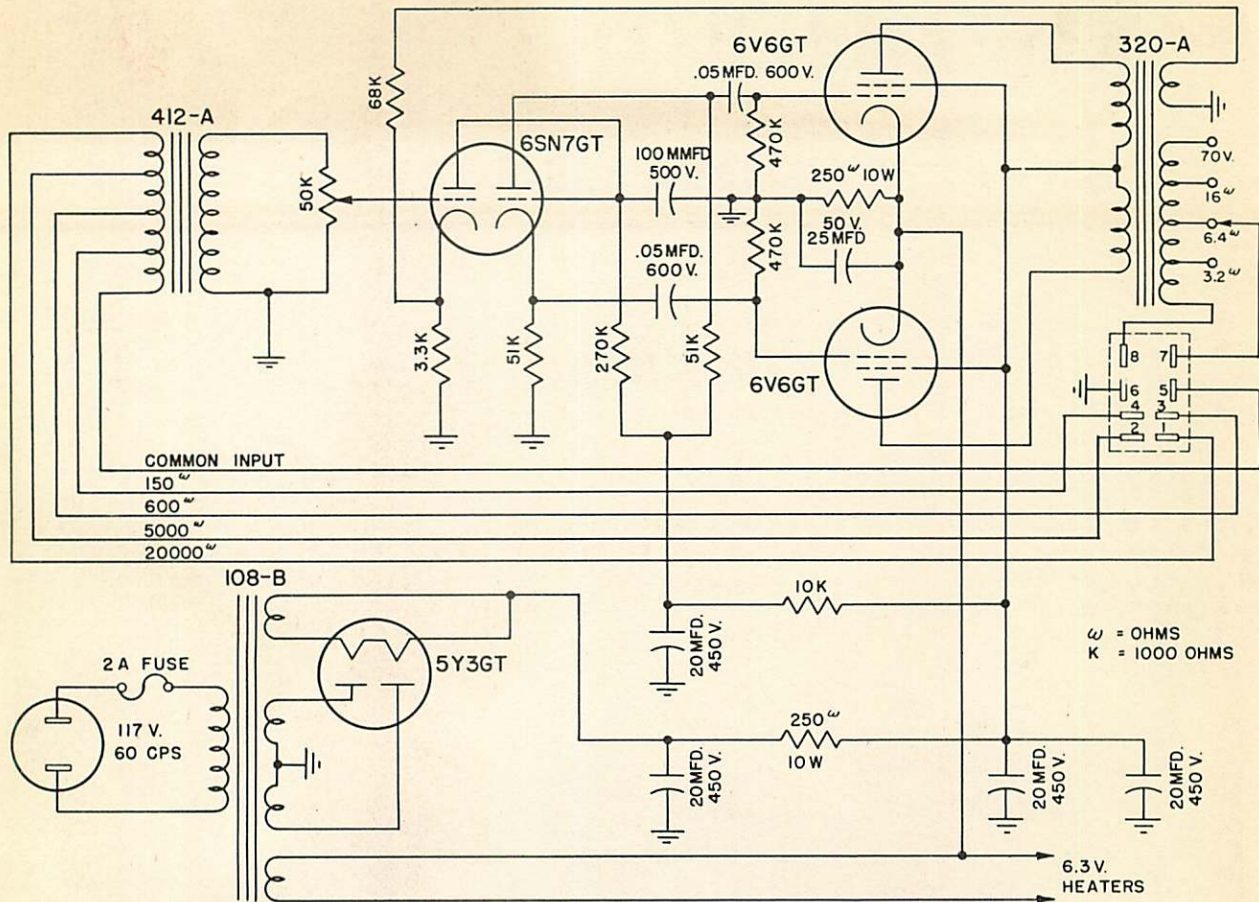
The 130A is completely self contained including power supply and all connections to the unit are of the plug-in type. Input and output connections are made through a Jones plug; the power connection uses a miniature connector. Provision is made for the volume control to be mounted on the top, side or end of the chassis depending on the mechanical requirements of the individual installation.



The small size of the 130A Amplifier permits mounting in consoles and cabinets or directly in the monitor speaker housing. Where several of the 130A Amplifiers are required, as in a rack installation, as many as four may be mounted on a standard Langevin 10B Mounting Frame.

The overall construction follows the usual Langevin high standard of quality. All transformer components are made by Langevin to insure maximum operating performance. The amplifier chassis is of #16 gauge steel, plated, bonderized and finished with baked enamel.





CHARACTERISTICS

Power Output:	8 Watts (plus 39 VU)	Input Impedance:	150/600/5000/20,000 ohms.
Distortion:	Less than 3% at rated output from 50 to 15,000 cps.	Output Impedance:	3.2/6.4/16 ohms/70 Volt line.
Frequency Response:	Plus or minus 1.0 db. 30 to 15,000 cps.	Power requirements:	60 VA on 117.V - 60 cps line.
Gain:	40.0 db with input matching line. 25.0 db with 20,000 ohm input across 600 ohm line or 5,000 ohm input across 150 ohm line.	Tubes:	1 - 6SN7GT, 2-6V6 GT 1 - 5Y3GT
Noise Level:	Less than - 30 dbm. (unweighted) at output terminals.	Size overall:	3-1/8" x 13" x 5" High.
		Weight:	9-1/2 lbs. (approx.)

